

Free idea for you

# Sew it yourself: Detachable fur collar

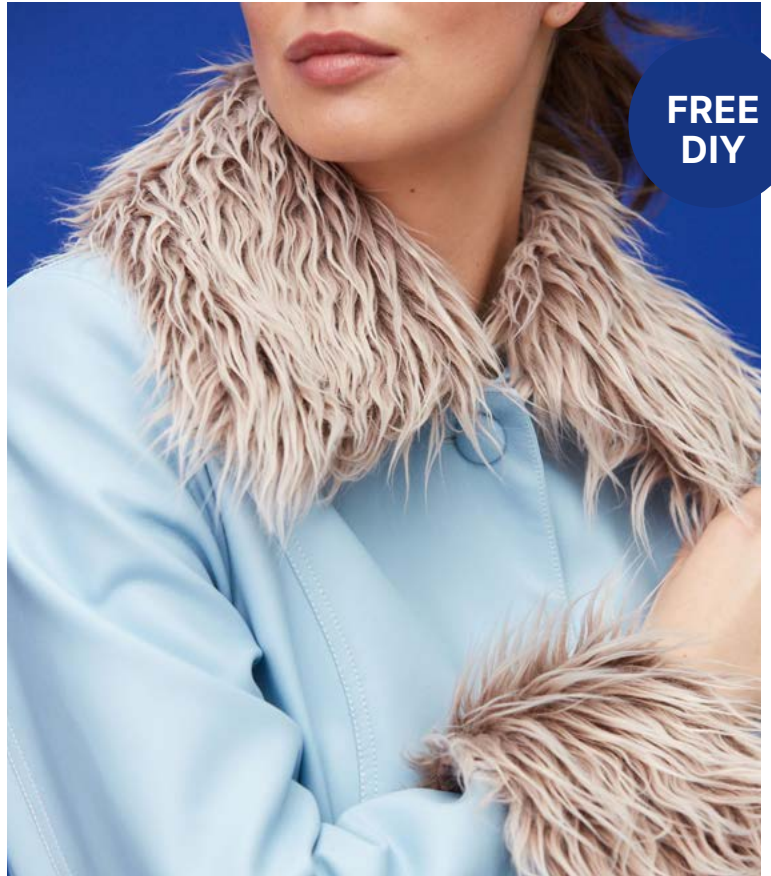
## Materials for horizontal collar

- 30 cm fur
- 30 cm lining
- 25 cm round elastic 1 mm (no. 3507066)
- 5 small buttons

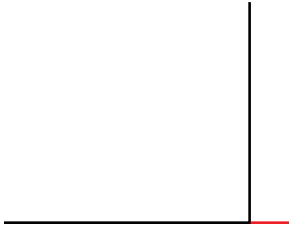
## Materials for lapel collar

- 30-60 cm fur
- 30-60 cm lining
- 30 cm round elastic 1mm (no. 3507066)
- 7 small buttons

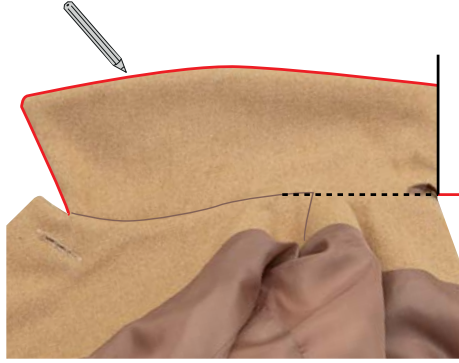
*Pssst ... Choose a colour for your lining that matches your fur and small buttons that match the colour of your jacket.*



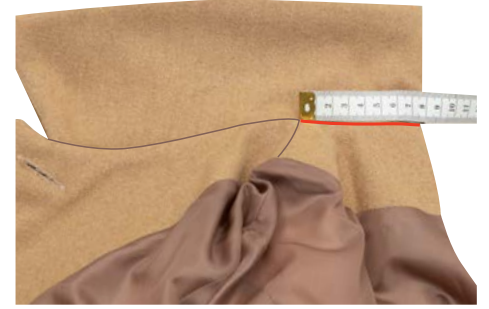
## HOW TO DRAW A PATTERN FOR HORIZONTAL COLLAR



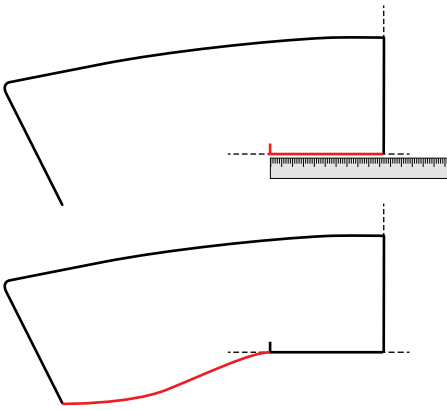
**1.** Draw 2 lines approx. 15 cm perpendicular to each other. Extend the horizontal line about 3 cm to the right.



**2.** Fold the collar in half and place it on the drawn angle. The collar neck seam on the back of the jacket must be on the horizontal line. Draw the outer line of the collar.

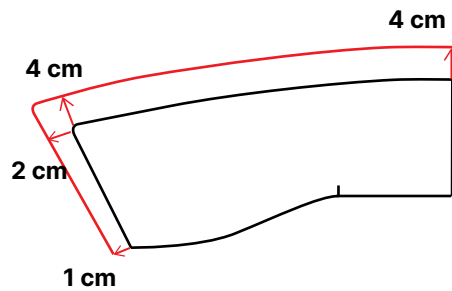


**3.** Measure the collar neck seam on the back of the jacket, in this example it is 8 cm.

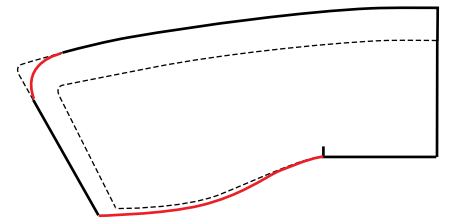


**4A.** Measure from the neck seam of the collar on the back, in this example . 8 cm, on the horizontal line and draw a notch = location at shoulder seam.

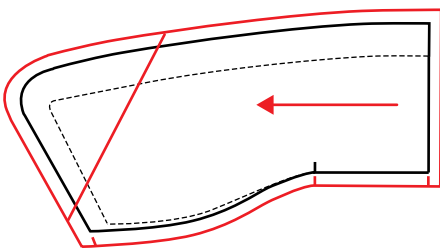
**4B.** Draw the neck seam of the collar on the front piece in a slight curve, looking at the shape of your jacket collar.



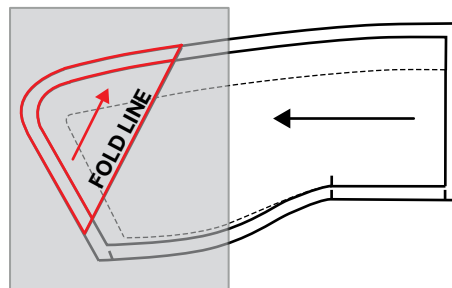
**5.** Draw the pattern larger. 1 cm at the collar neck seam, 2 cm and 4 cm at the collar tip, and 4 cm at the center back collar.



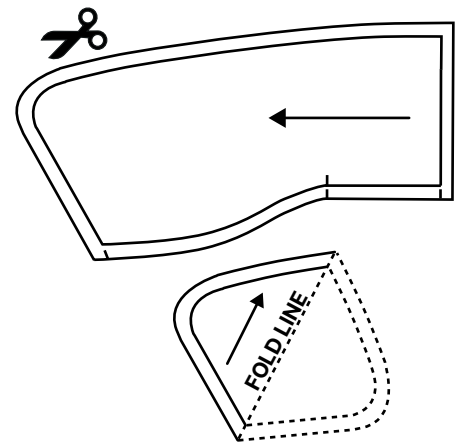
**6.** Round off the collar tip. and draw a new neck seam.



**7.** Draw 1 cm seam allowance all the way around the pattern. Draw the direction arrow perpendicular to the center back. Draw notches on the collar neck seam at center back, shoulder and front. Draw a slanted line that goes over the original collar tip.

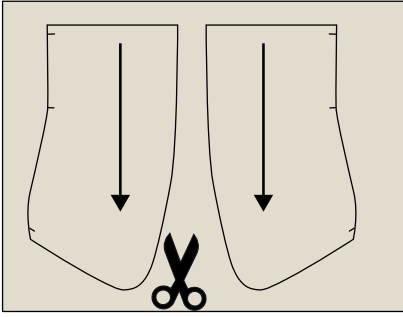


**8.** Trace the new pattern piece to the collar tip on pattern paper. Draw the direction line parallel to the slanted line.

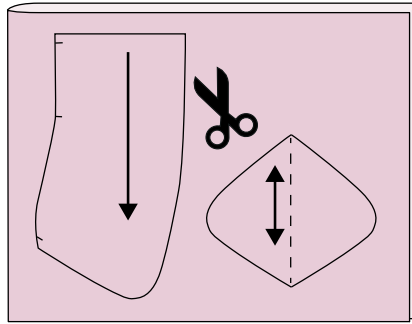


**9.** Mirror pattern piece for collar tip around fold line and cut out.

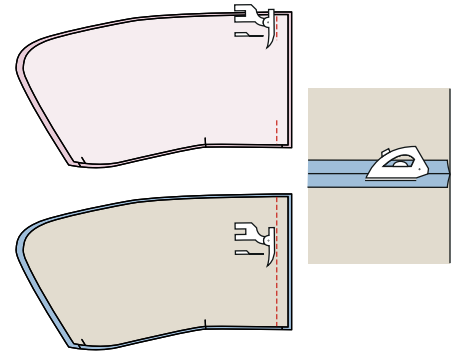
## HOW TO SEW A HORIZONTAL FUR COLLAR



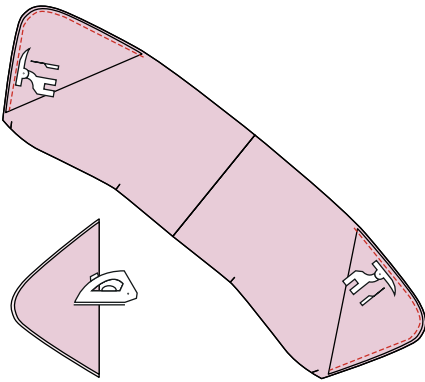
**10.** Cut 2 fur collars (right and left) from the wrong side. The hairs on the coat should point in the same direction as the arrow points. Cut only 1 layer of fabric at a time and cut only the knitted/woven material to avoid cutting the fur hairs.



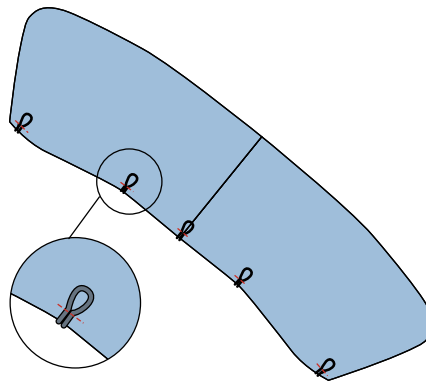
**11.** Fold the lining fabric in half and cut 2 collars and 2 collar corners.



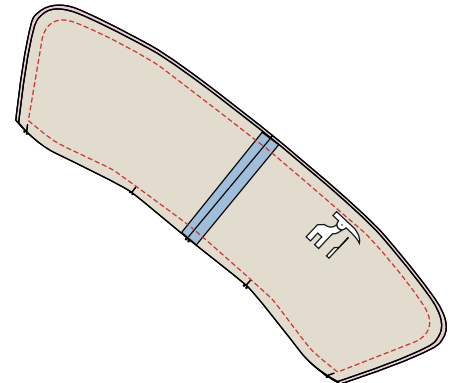
**12.** Sew the fur collar together at the center back with a 1 cm seam. Sew the lining collar together at the center back with a 1 cm seam, leaving a hole open to turn through. Press the seam apart.



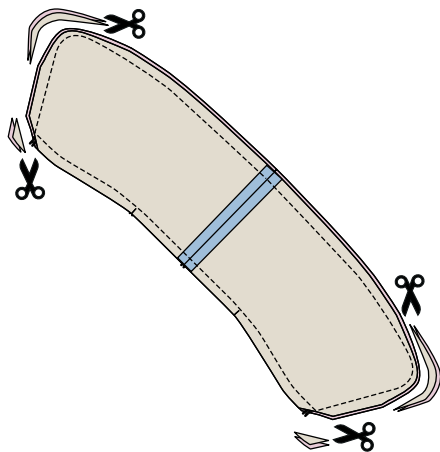
**13.** Fold collar corner in half, wrong side to wrong side, and press. Place the collar corner on the right side of the front of the collar and sew with a 0.5 cm stitch.



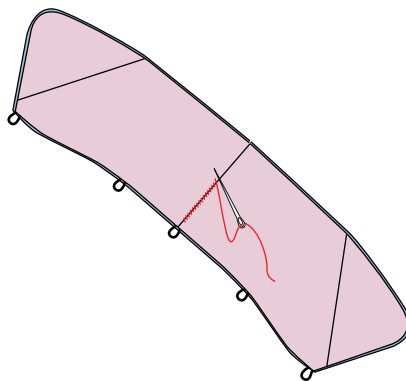
**14.** Cut 5 pieces of round elastic 3.5-4 cm. Sew loops to the right side of the fur collar at the notch and center back.



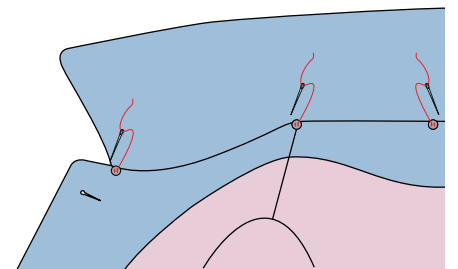
**15.** Place lining collar and fur collar right sides together, sew with a 1 cm seam. Push the long fur hairs away from the seam and towards the center of the pattern piece when sewing together.



**16.** Cut the curve down to 0.5 cm seam. Trim corners.

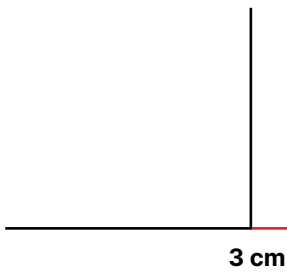


**17.** Turn right side out and sew the hole in the lining together by hand with small invisible stitches.



**18.** Sew small buttons on the jacket. Sew a button at the center back, shoulder seams and center front. Place the collar of the jacket inside the lining corner when you button the fur collar.

## LAPEL COLLAR PATTERN



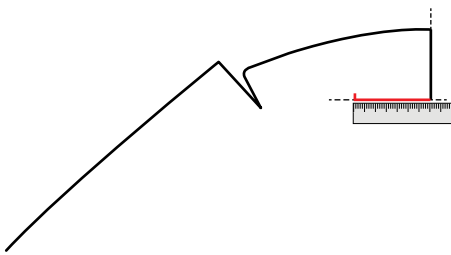
**1.** Draw 2 lines approx. 15 cm perpendicular to each other. Extend the horizontal line about 3 cm to the right.



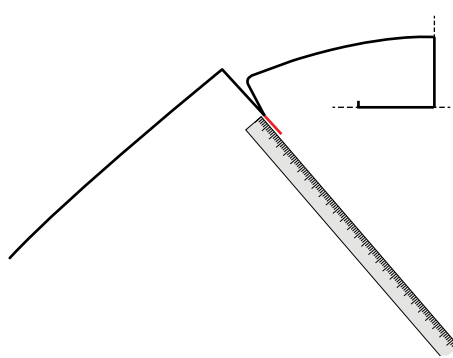
**2.** Fold the collar in half and place it on the drawn angle. The collar neck seam on the back of the jacket must be on the horizontal line. Draw the outer line of the collar, drawing all the way down to the top buttonhole.



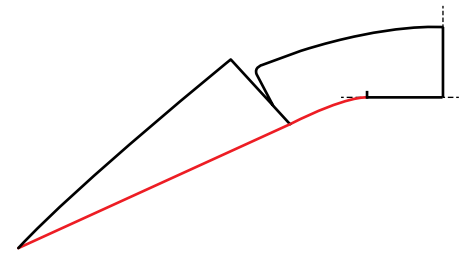
**3.** Measure the neck seam of the collar on the back of the jacket, in this example it is 8.5 cm and measure the lapel seam of the collar in this example it is 4.5 cm.



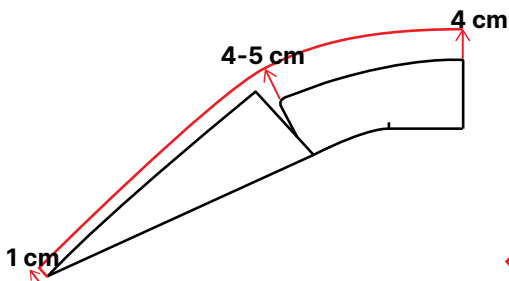
**4.** Place the measurement from the neck seam of the collar on the back (in this ex. 8.5 cm), on the horizontal line and draw a notch = location at shoulder seam.



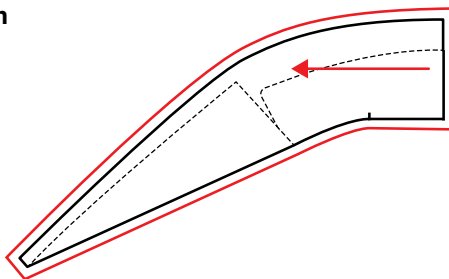
**5.** Set off the measurement from the lapel seam of the collar, in this example 4.5 cm, in extension of the collar line on the front piece.



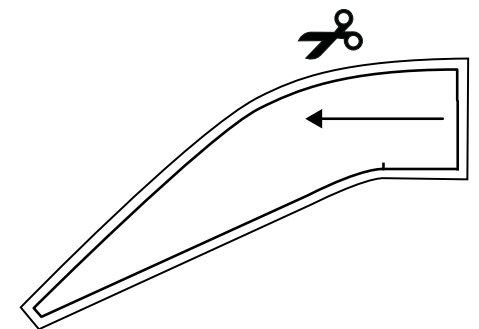
**6.** Draw a slight arc from the notch to the end of the extended line and down to the point at the top buttonhole.



**5.** Draw the pattern larger. Add 4 cm at collar center back, 4-5 cm at collar tip and 1 cm at top buttonhole. Draw the outer line of the new collar. Add notch at lapel seam.



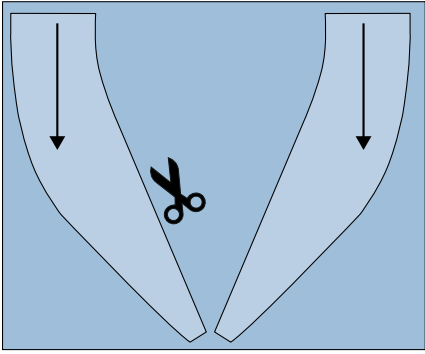
**7.** Draw 1 cm seam allowance all the way around the pattern. Add notches at shoulder point, lapel seam and top buttonhole. Draw the direction arrow perpendicular to the center back.



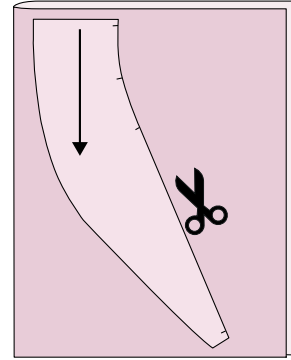
**9.** Cut out the pattern.



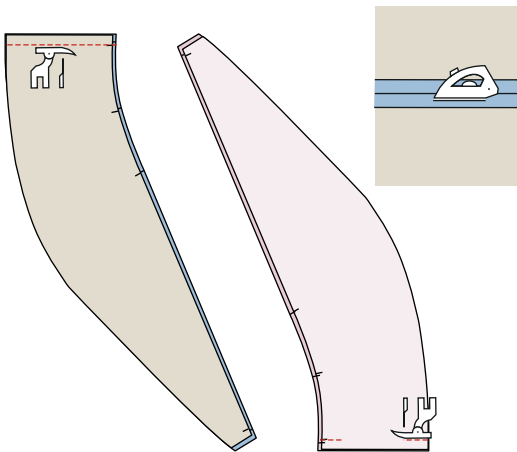
## HOW TO SEW A LAPEL FUR COLLAR



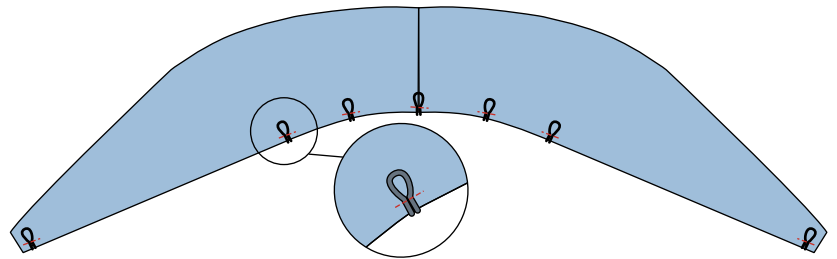
**10.** Cut 2 fur collars (right and left) from the wrong side. The hairs on the coat should point in the same direction as the arrow points. Cut only 1 layer of fabric at a time and cut only the knitted/woven material to avoid cutting the fur hairs. Draw a marking and stitch line for the collar ends on the wrong side.



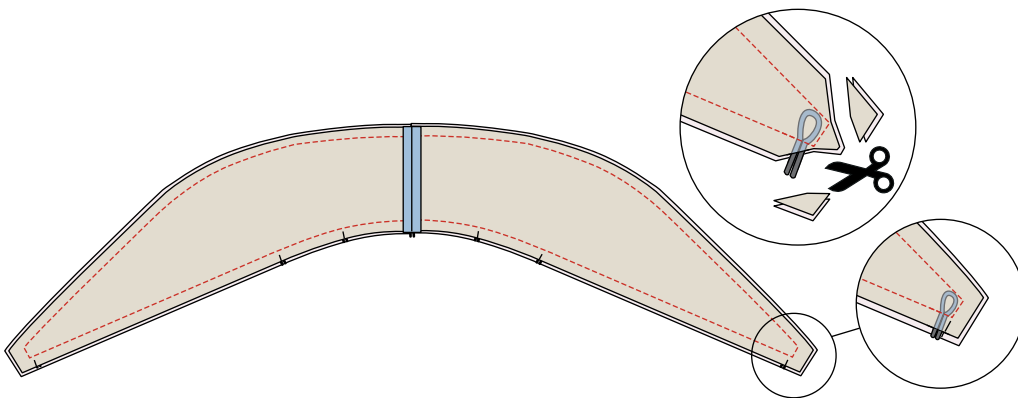
**11.** Fold the lining fabric in half and cut 2 collars in the lining.



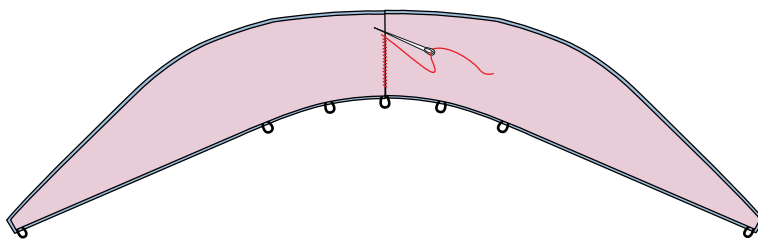
**12.** Sew the fur collar together at the center back with a 1 cm seam. Sew the lining collar together at the center back with a 1 cm seam, leaving a hole open to turn through. Press the seam apart.



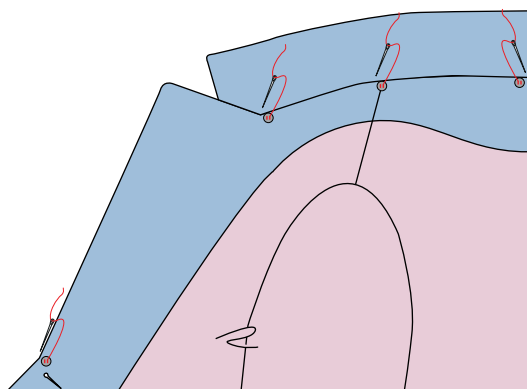
**13.** Cut 7 pieces of round elastic 3.5-4 cm. Sew loops to the right side of the fur collar at the notch and center back.



**14.** Læg foer krave og pels krave ret mod ret, sy sammen med 1 cm søm. Skub de lange pelshår væk fra sømmen og ind mod midten af mønsterdelen, når du syr sammen. Pas på at du ikke syr i elastik loop foruden på kraven. Klip hjørner af.



**17.** Turn right side out and sew the hole in the lining together by hand with small invisible stitches.



**18.** Sew small buttons on the jacket. Sew a button at center back, shoulder seam, lapel seam and center front. Place the collar of the jacket inside the lining corner when you button the fur collar.