

DIY2400 Bow blouse #lisebowblouse



You need the following fabric and accessories

UK Size 6-18
EU Size 34-46

Fabric: w/135 cm 130

Seam allowance is included on all patterns:

Center front 2x1 cm

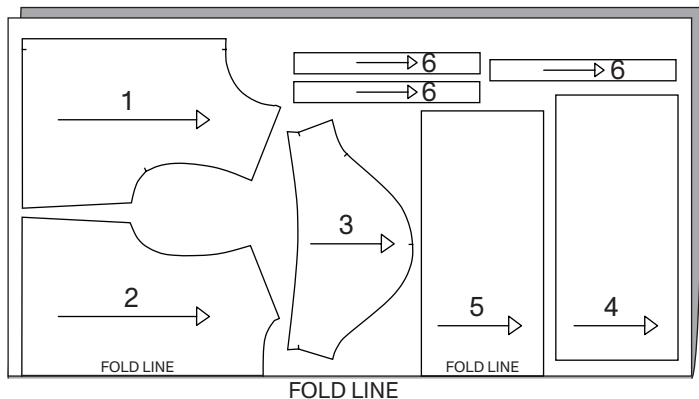
Hem line 1.5 cm

Sleeve hem 2 cm

All other seams 1 cm

You need to cut the following parts

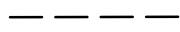
Part 1	Front	x 2	
Part 2	Back	x 1	
Part 3	Sleeve	x 2	
Part 4	Ruffle front	x 2	50 cm x 25 cm
Part 5	Ruffle back	x 1	100 cm x 25 cm
Part 6	Tie string	x 6	35 cm x 4 cm



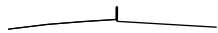
Symbols you may find on your patterns



Grain line



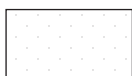
Fold line



Notch



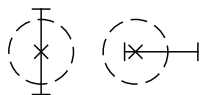
Gathering



Interlining



Cut line



Placement of button and buttonhole

10 CM

Self
made®

CONTROL SQUARE:

Print page 1, to check the square measurements:

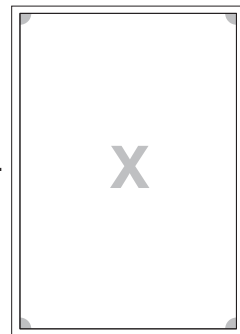
If the measurements do not match, please adjust your printer settings.

10 CM

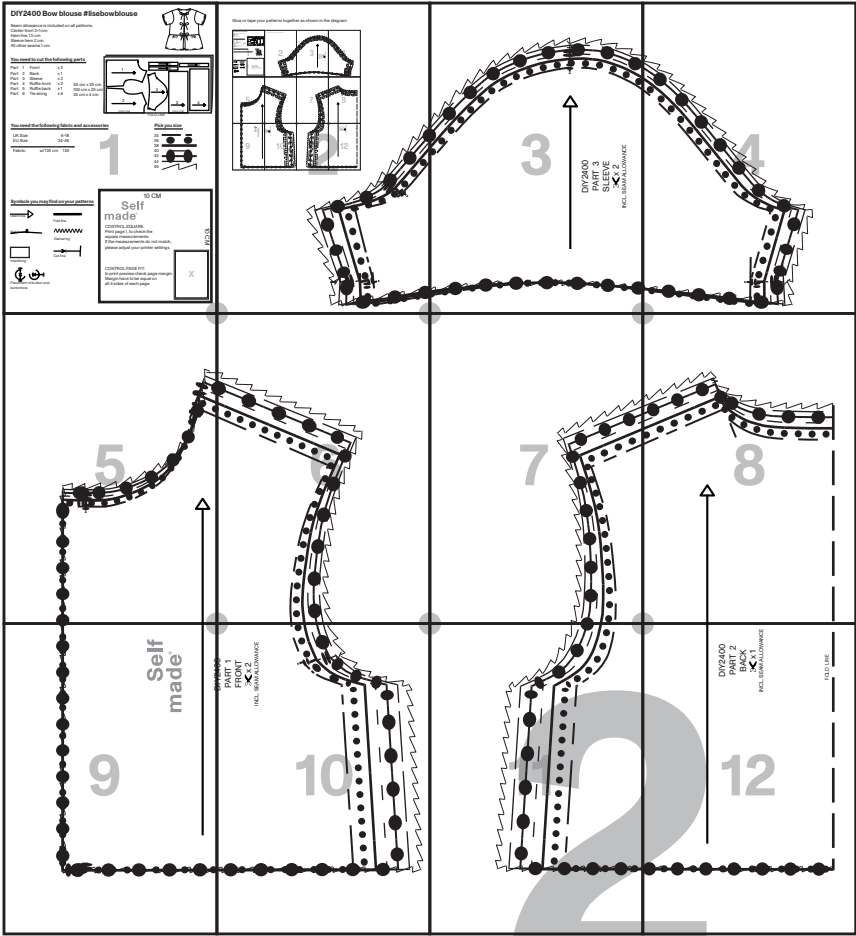
CONTROL PAGE FIT:

In print preview check page margin.

Margin have to be equal on all 4 sides of each page.

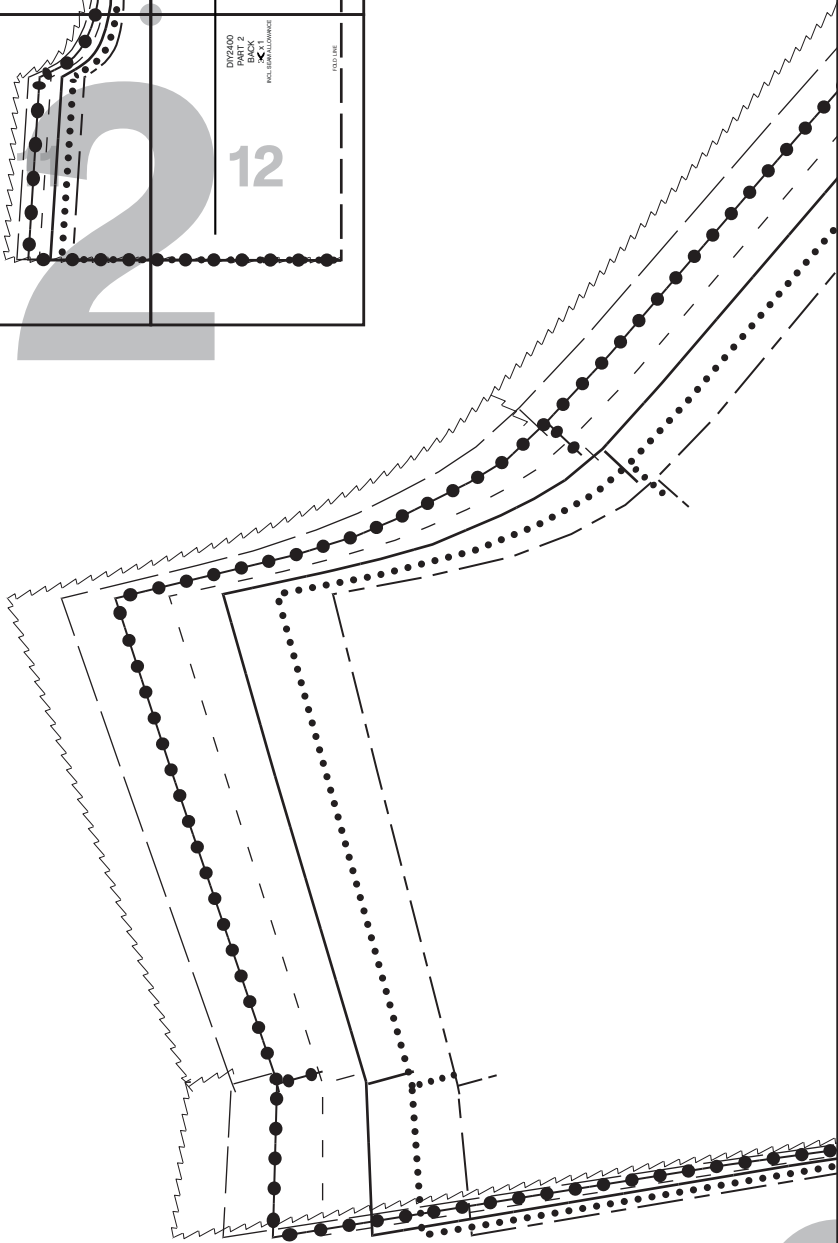


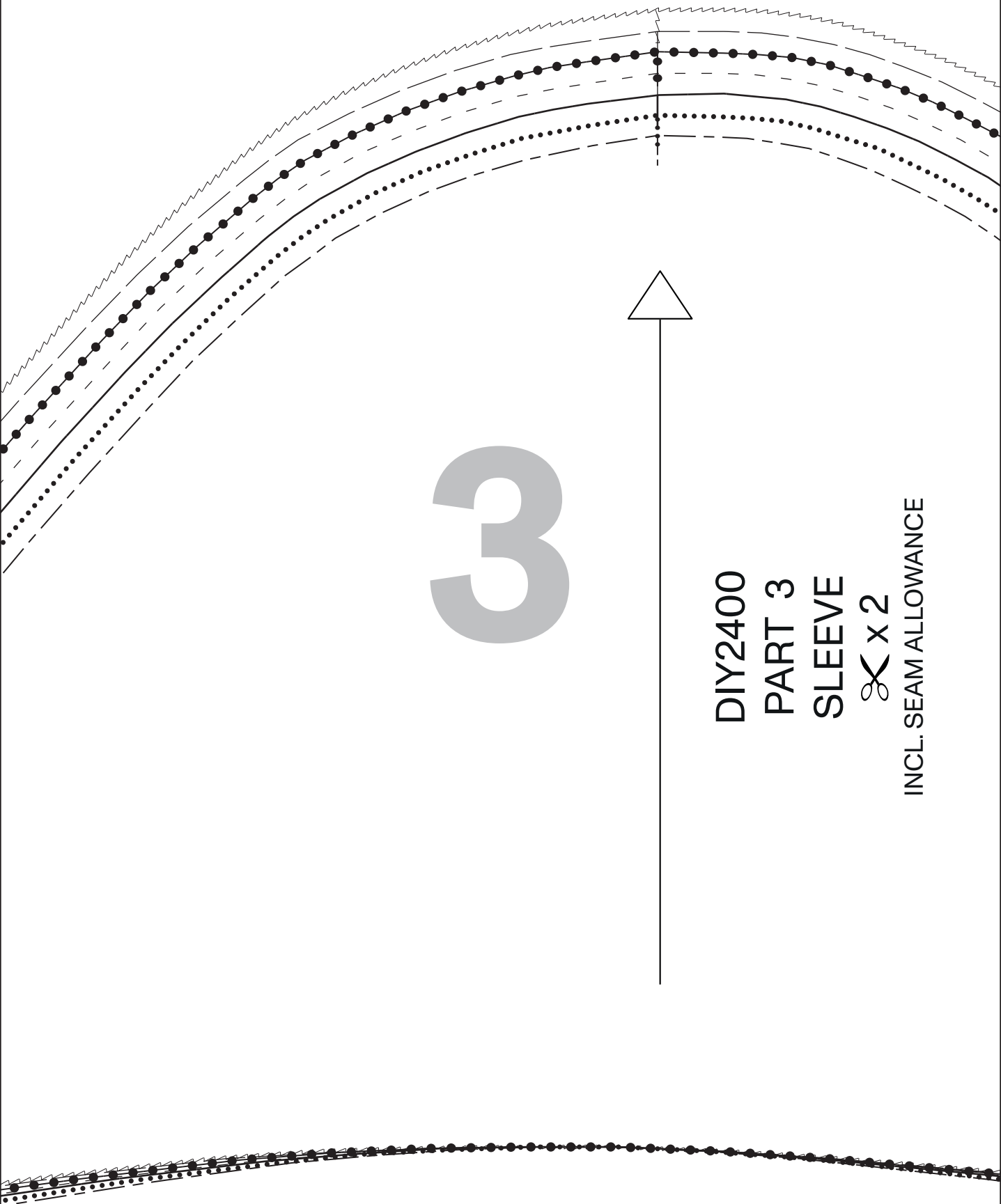
Glue or tape your patterns together as shown in the diagram



Pick you size

- 34
- 36
- 38
- 40
- 42
- 44
- 46





3

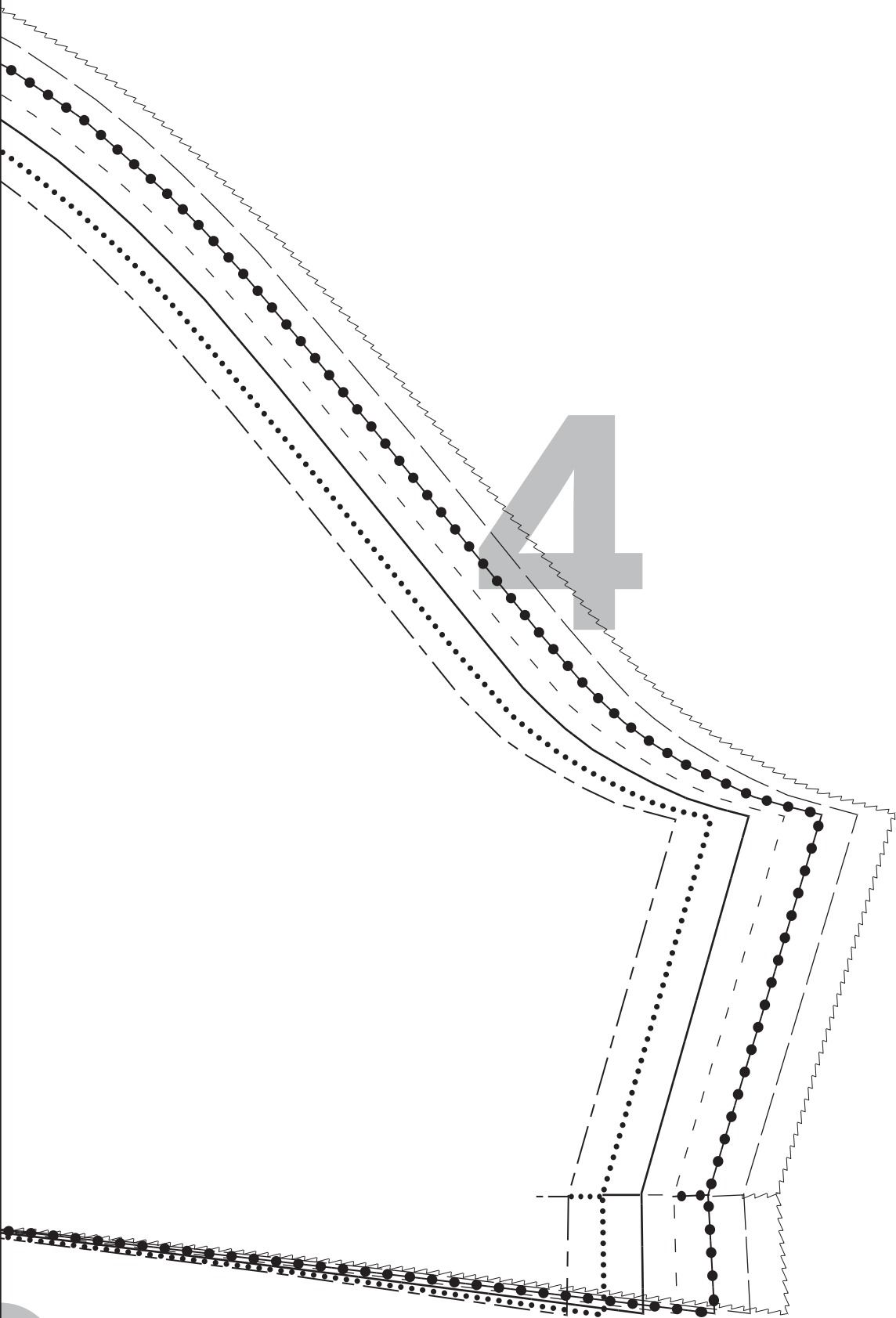
DIY2400
PART 3
SLEEVE



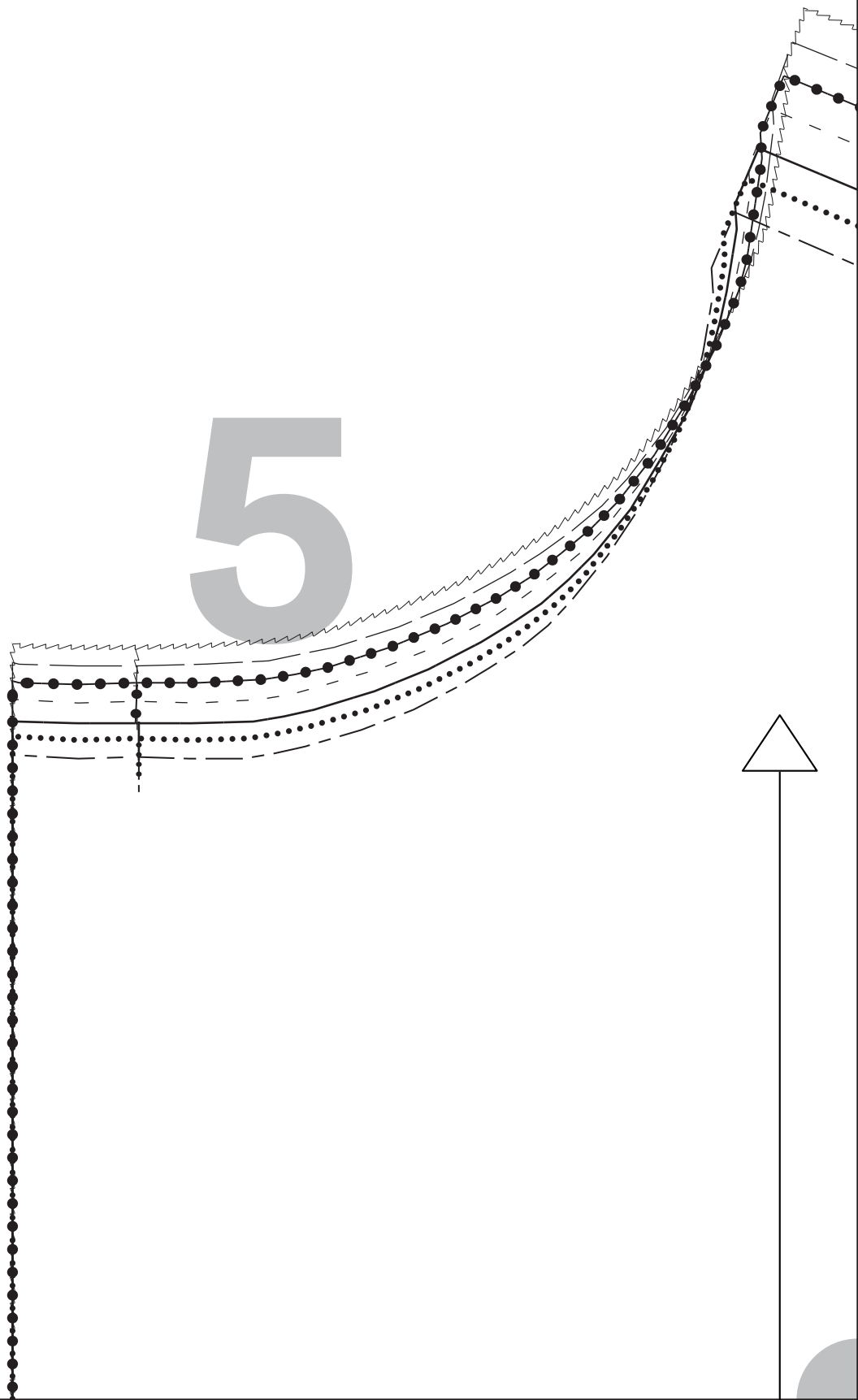
x 2

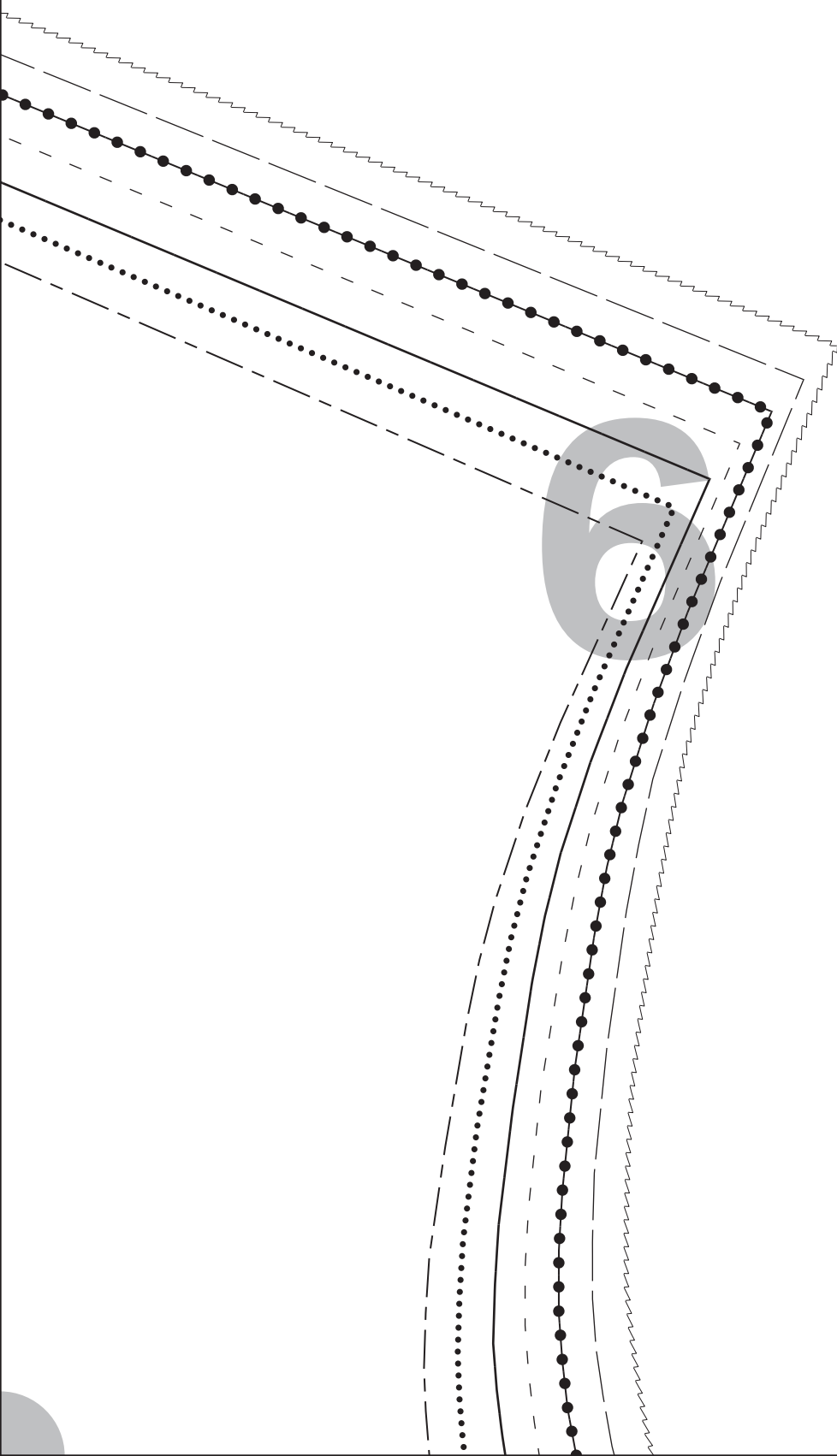
INCL. SEAM ALLOWANCE

4

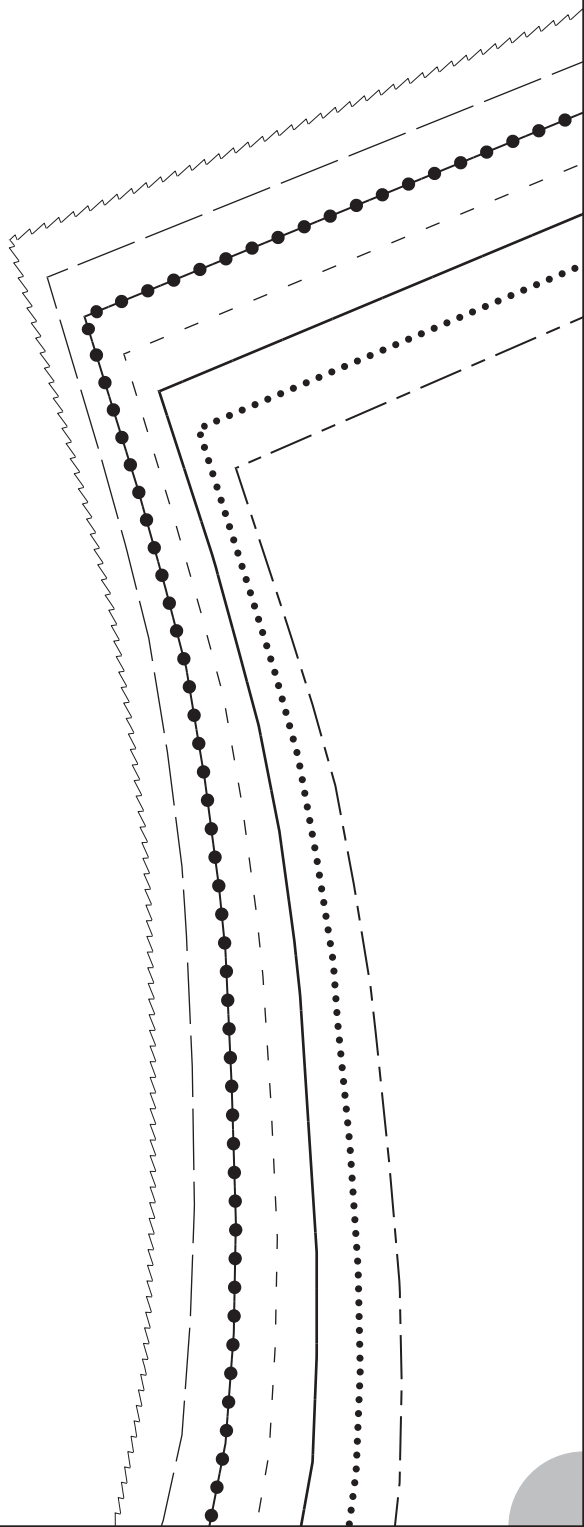


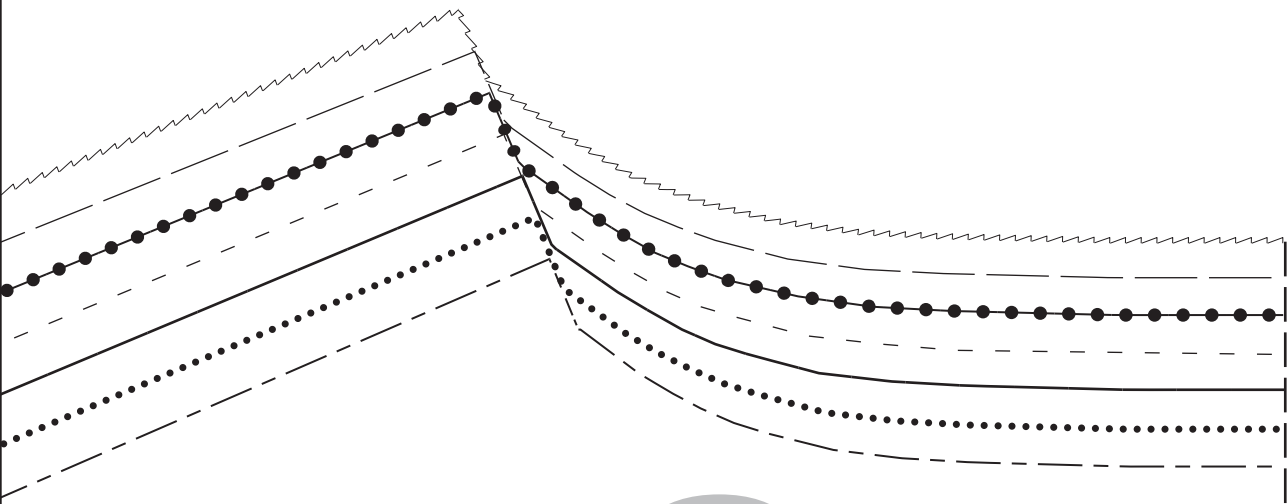
5



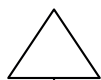


7





8



9

Self
made®

DIY 2400

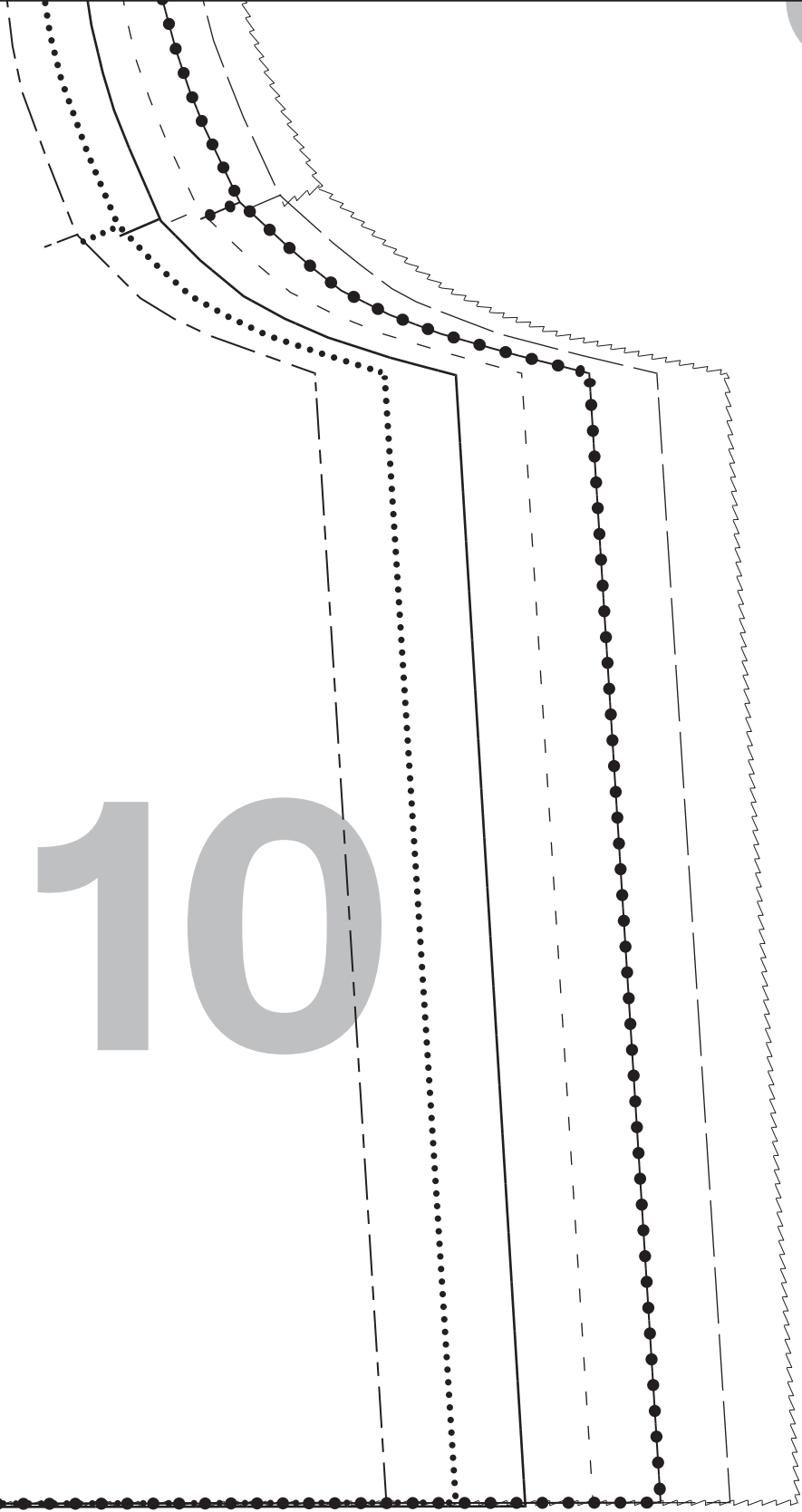
PART 1
FRONT

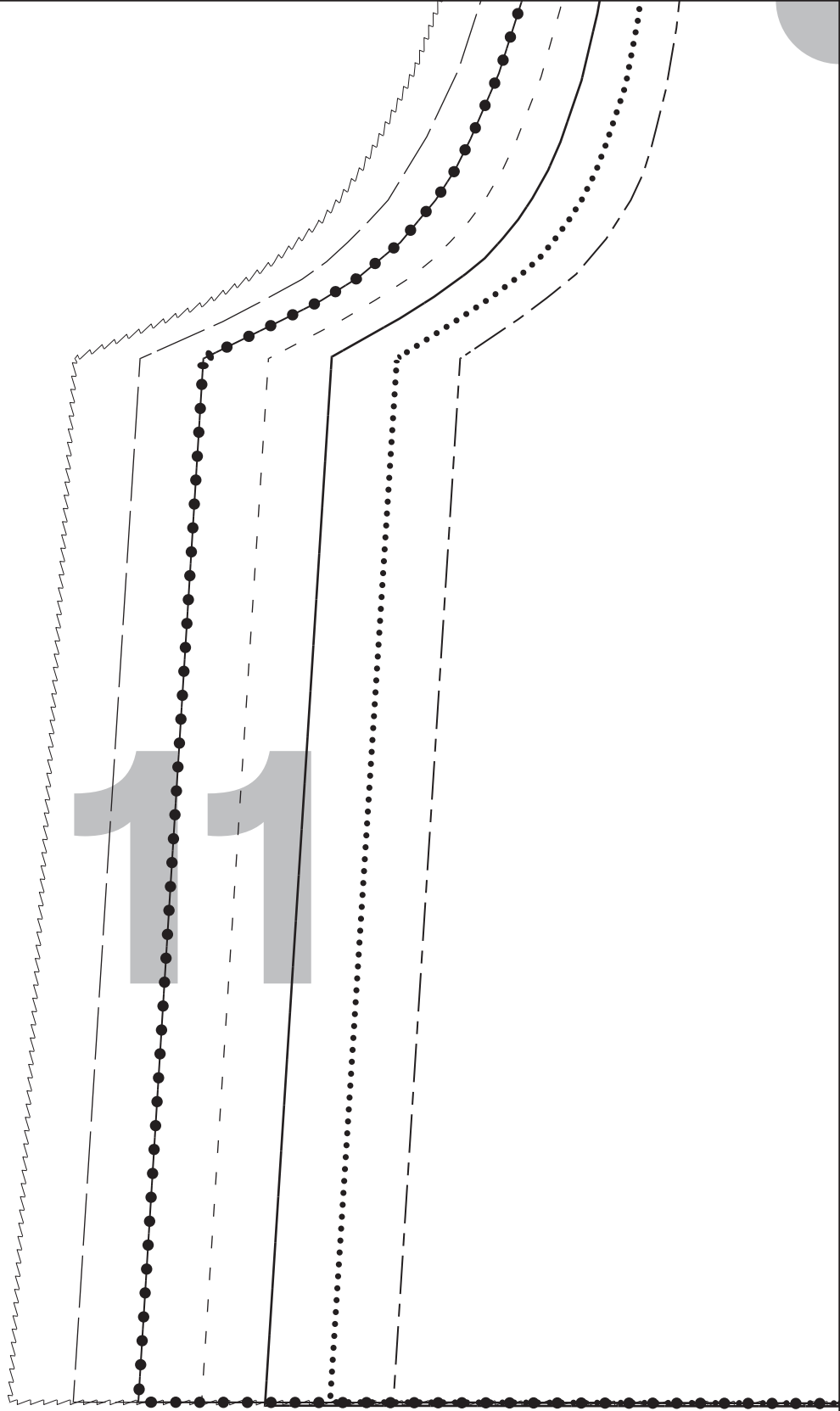


x 2

INCL. SEAM ALLOWANCE

10





DIY2400
PART 2
BACK



x1

INCL. SEAM ALLOWANCE

12

FOLD LINE