

DIY2401 A-dress with puff sleeve #pernilledress

Seam allowance is included on all patterns:
 Sleeve hem 6 cm
 All other seams 1 cm



You need to cut the following parts

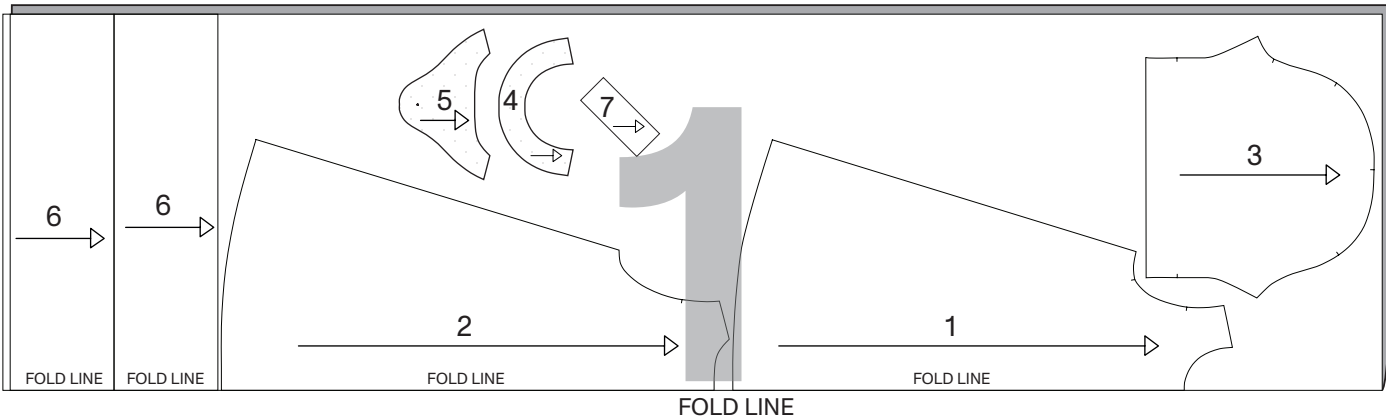
Part 1	Front	x1
Part 2	Back	x1
Part 3	Sleeve	x2
Part 4	Facing front	x1
Part 5	Facing back	x1
Part 6	Ruffle	x2 full fabric width x 20 cm
Part 7	Button loop	x1

You need the following fabric and accessories

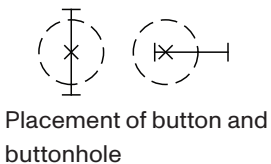
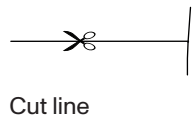
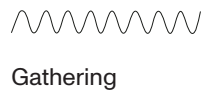
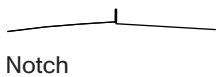
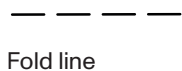
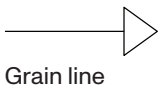
UK Size	6-12	14-18
EU Size	34-40	42-46

Fabric:	w/145 cm	265	275
Interlining:	w/90 cm	25	25

Accessories:
 1 Button + elastic 5 mm cut 2 x 31 cm



Symbols you may find on your patterns



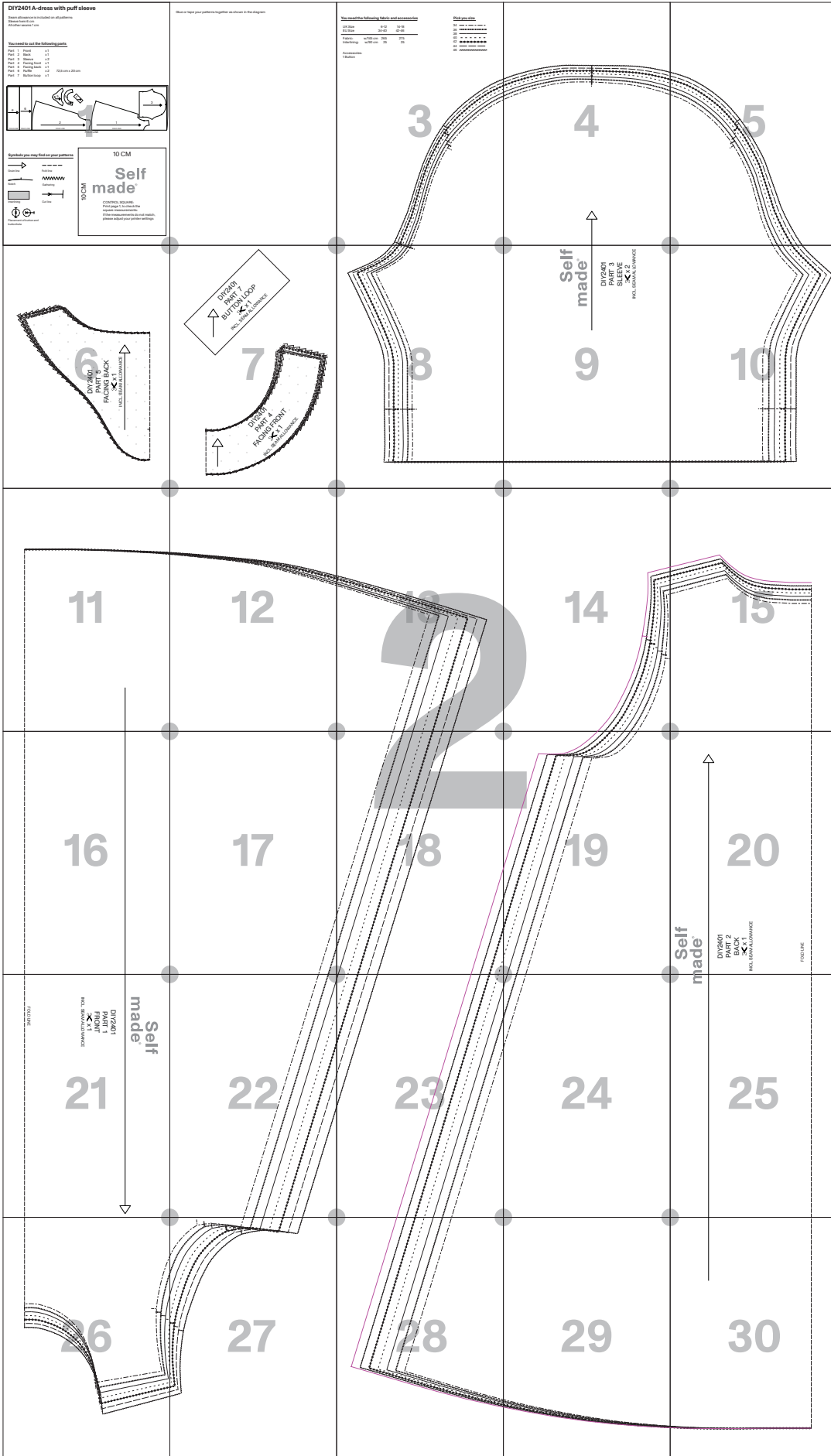
10 CM

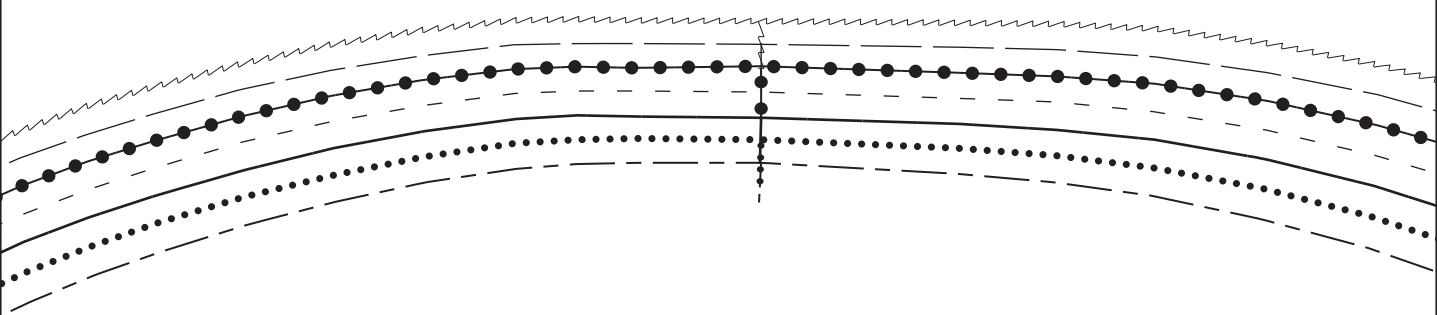
Self
made®

10 CM

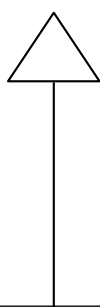
CONTROL SQUARE:
 Print page 1, to check the square measurements:
 If the measurements do not match, please adjust your printer settings

Glue or tape your patterns together as shown in the diagram

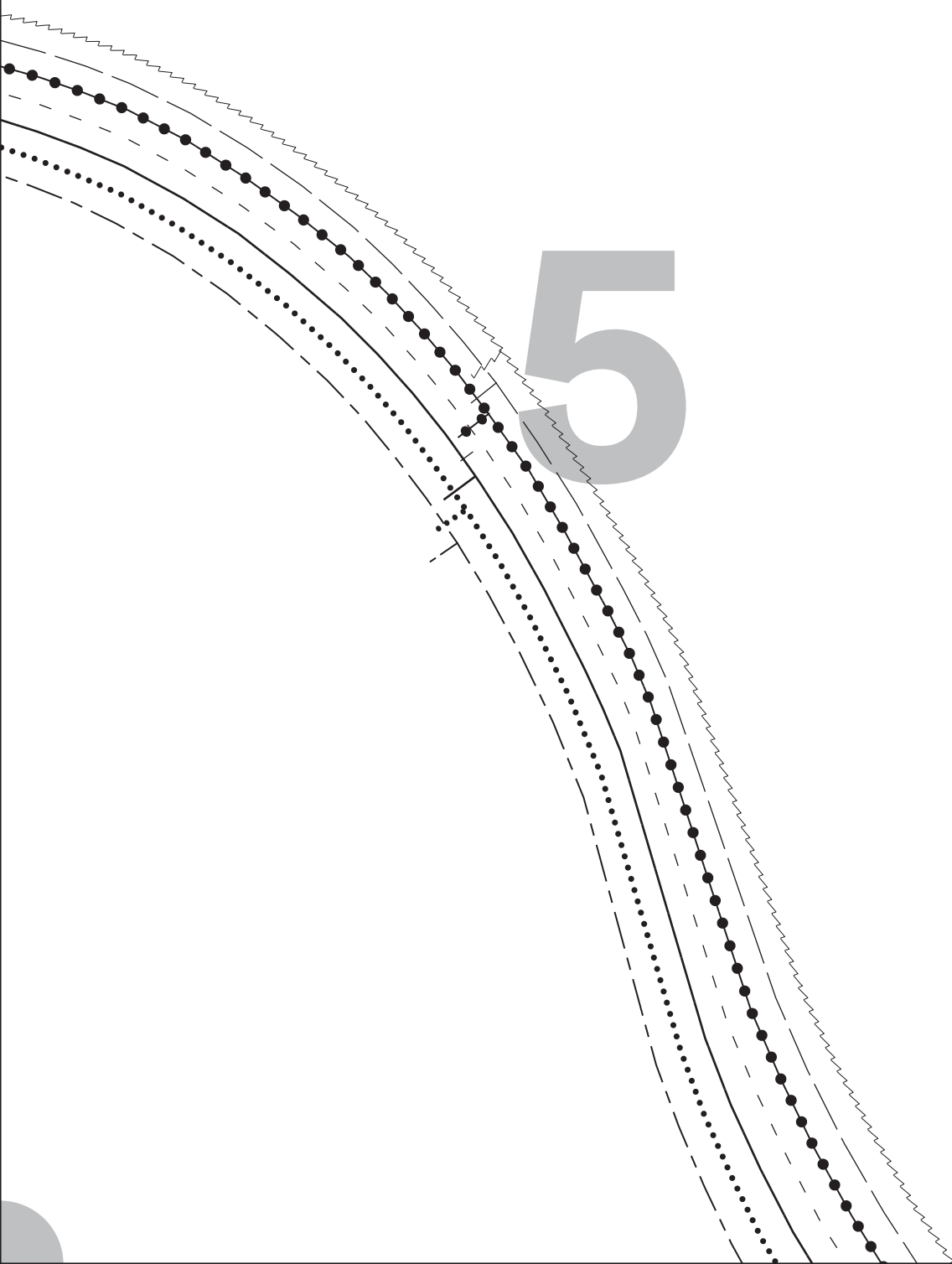




4



5



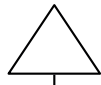
6

DIY2401
PART 5

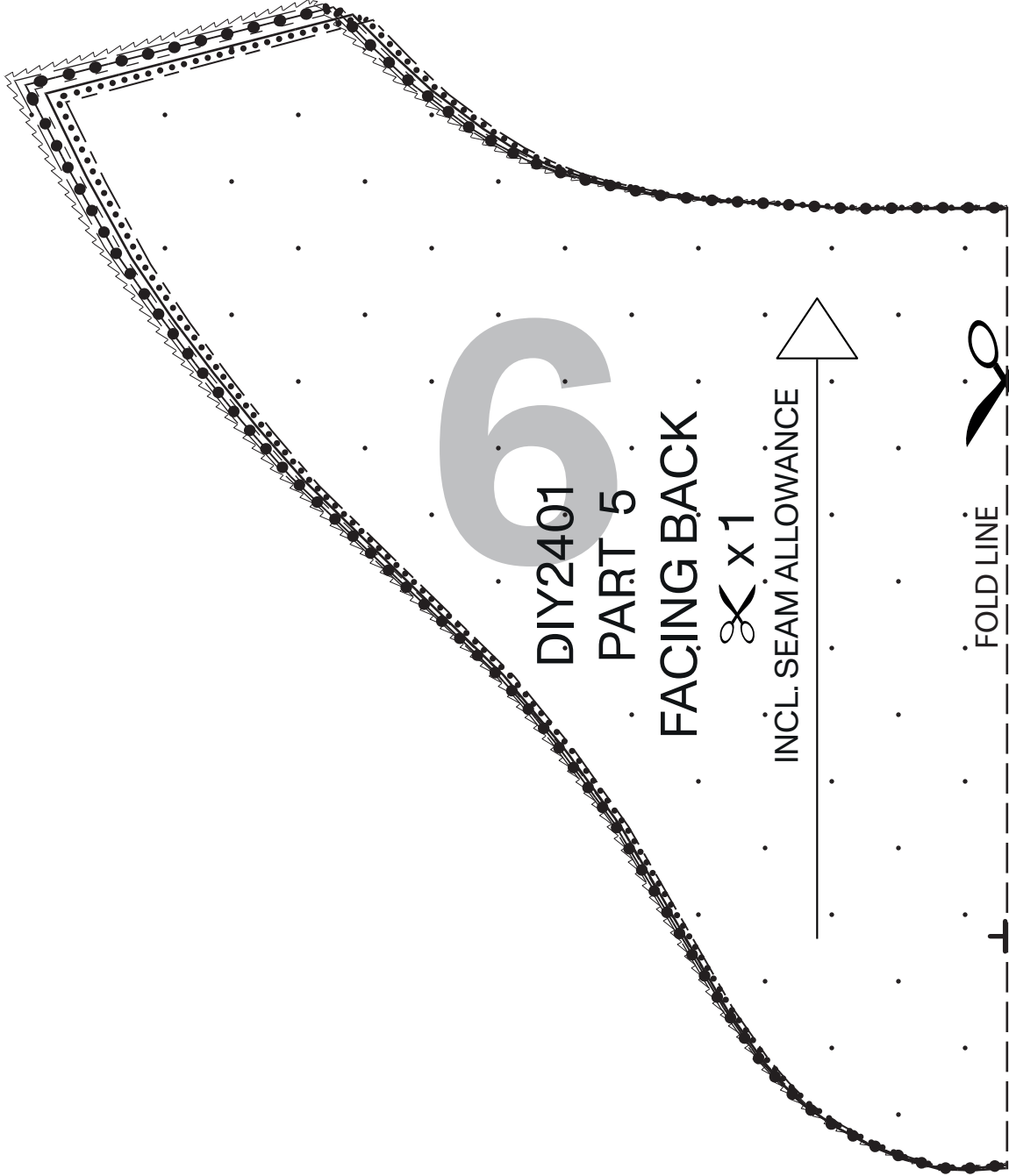
FACING BACK

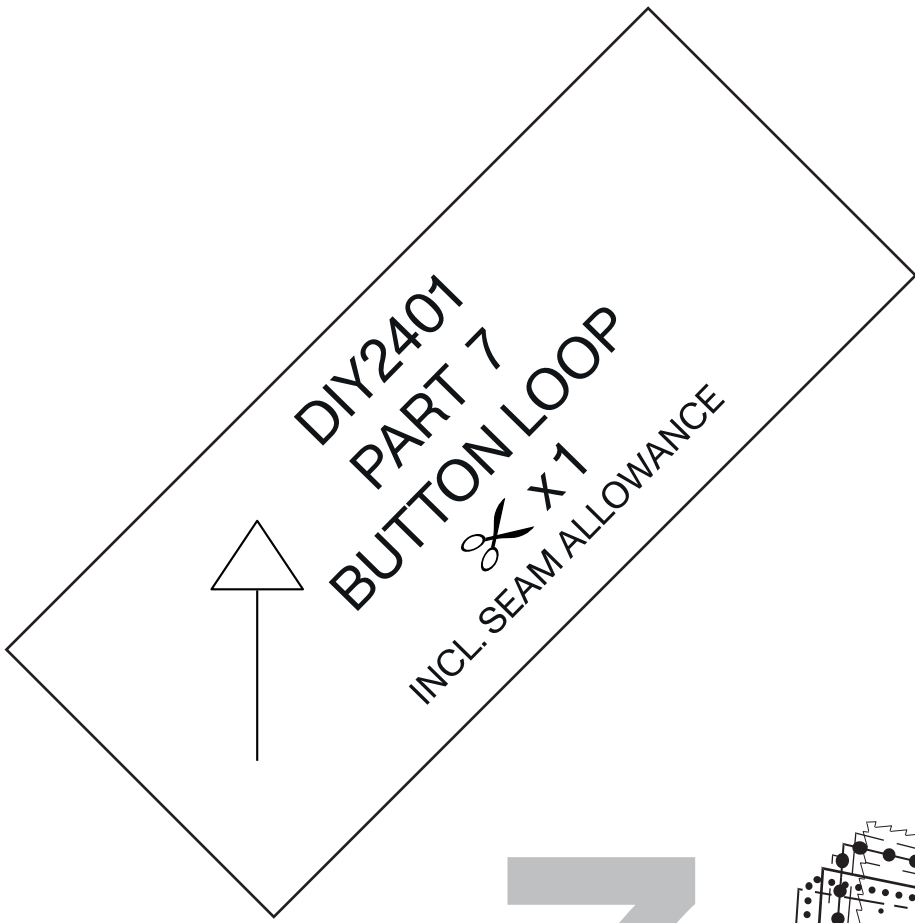
✂ x1

INCL. SEAM ALLOWANCE

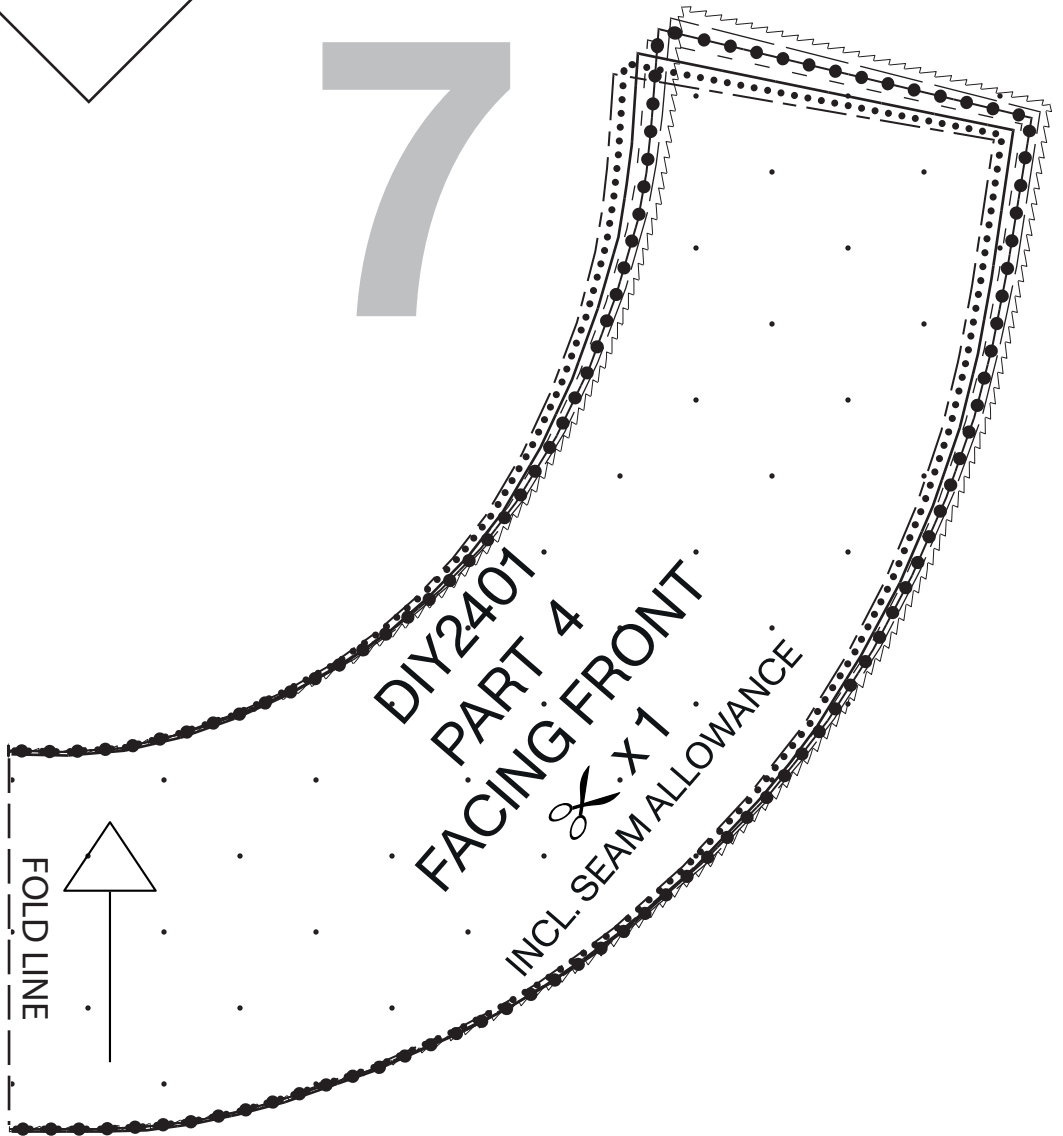


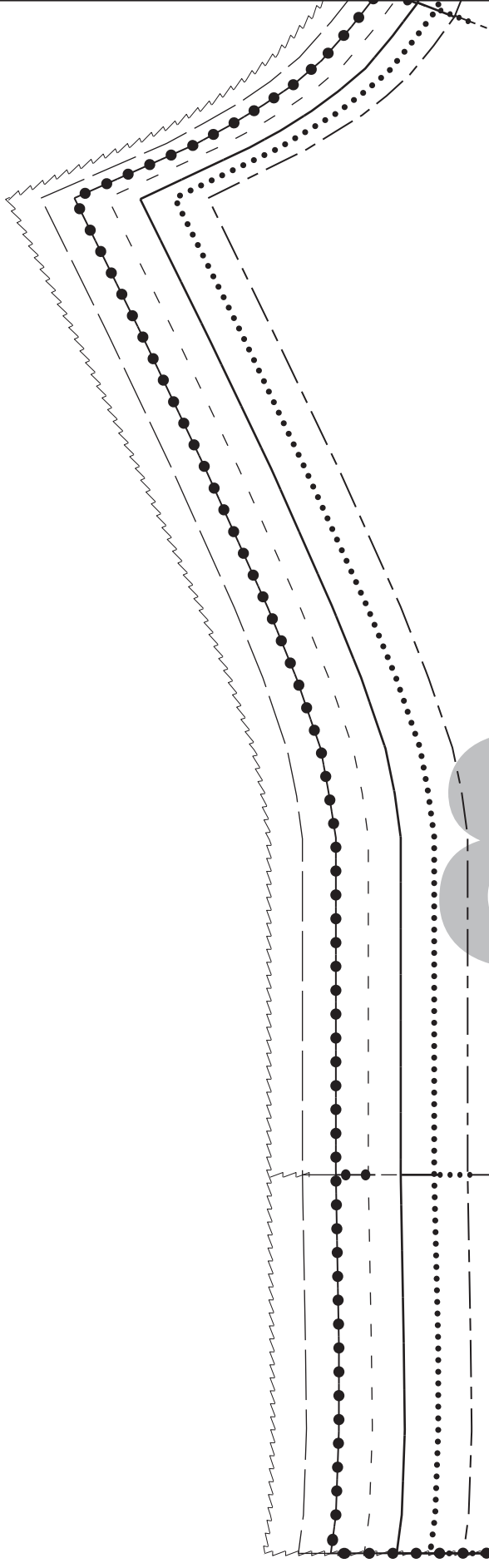
FOLD LINE





7





8



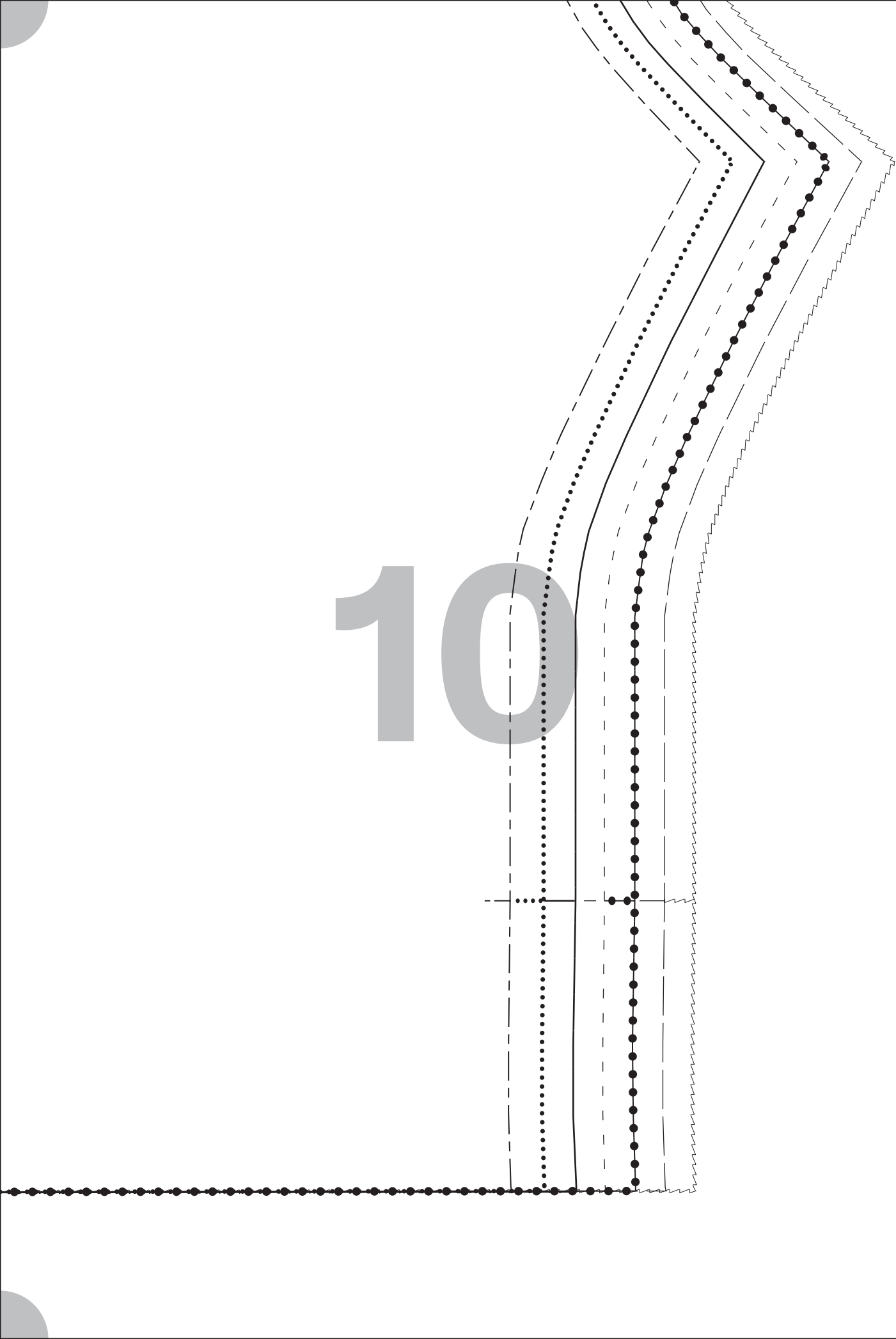
9

Self
made[®]

DIY2401
PART 3
SLEEVE
✂ x 2

INCL. SEAM ALLOWANCE

10



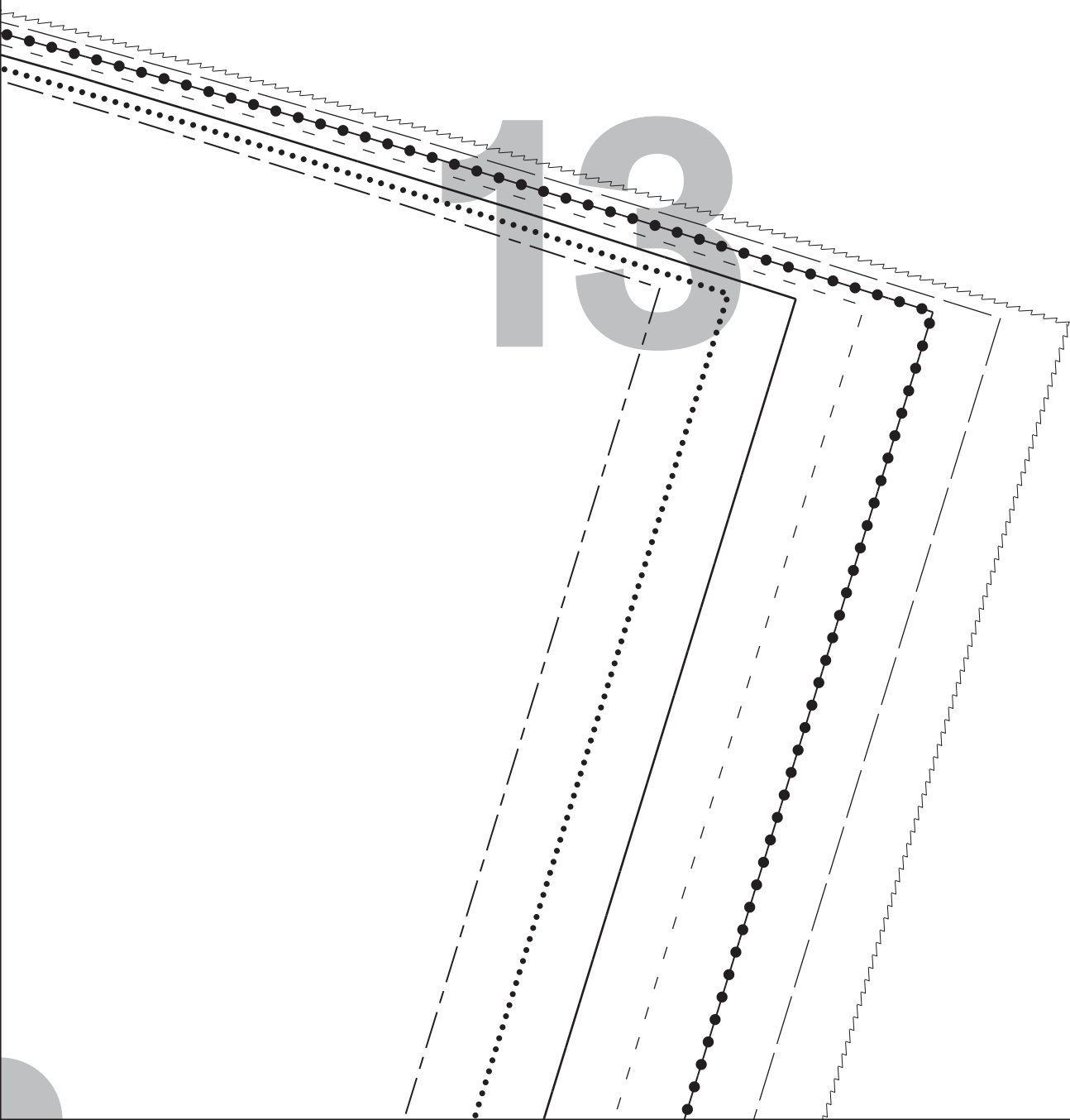


11



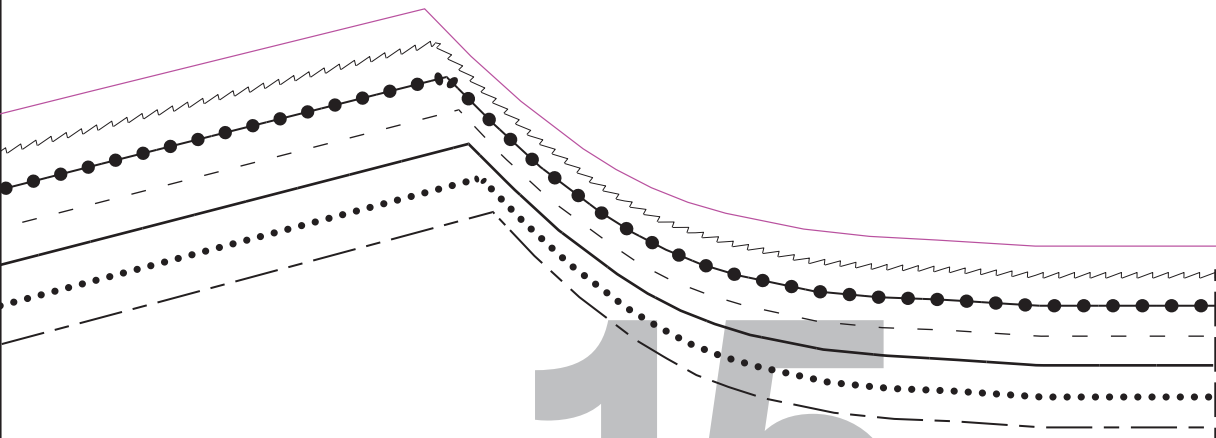


12



14



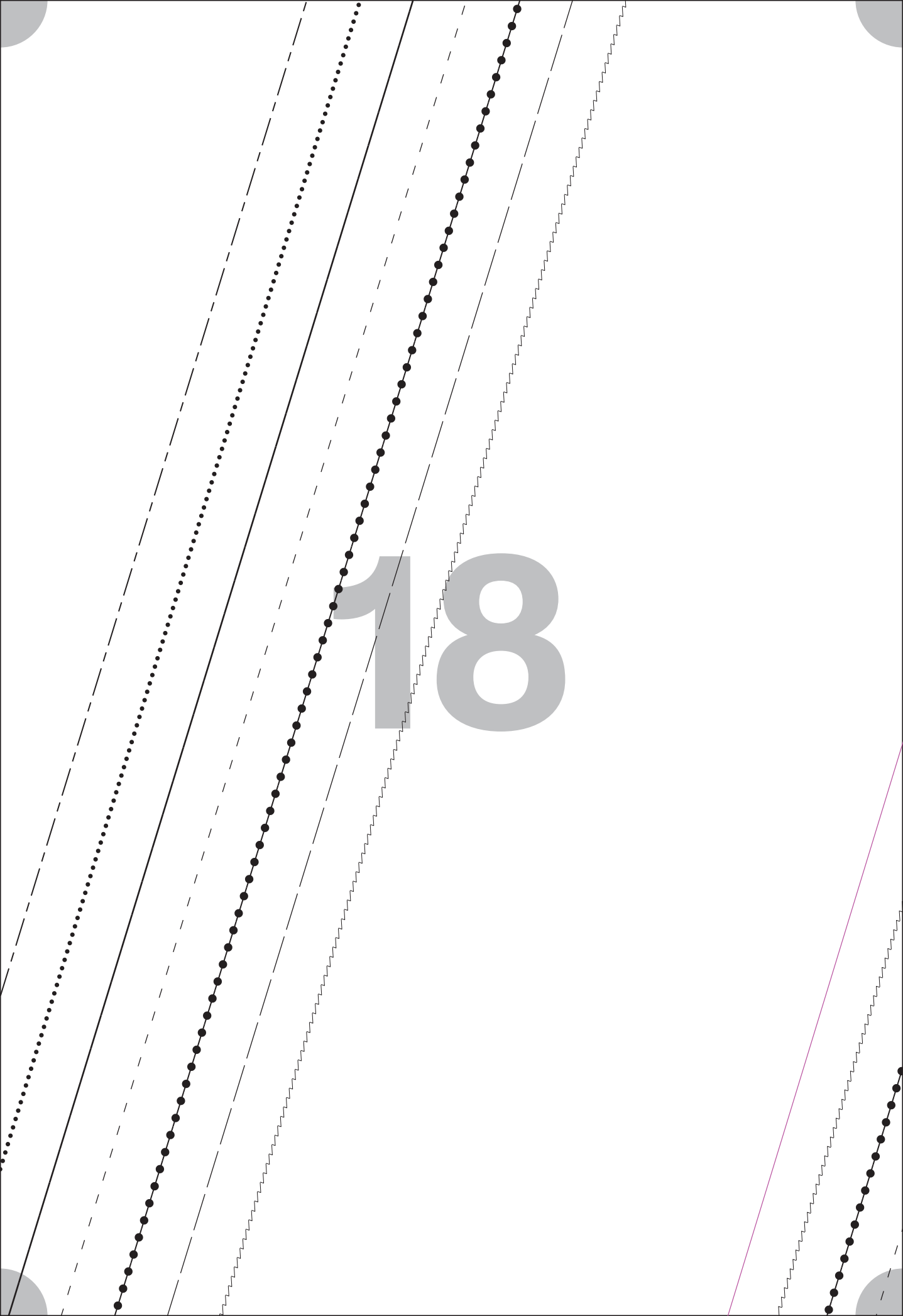


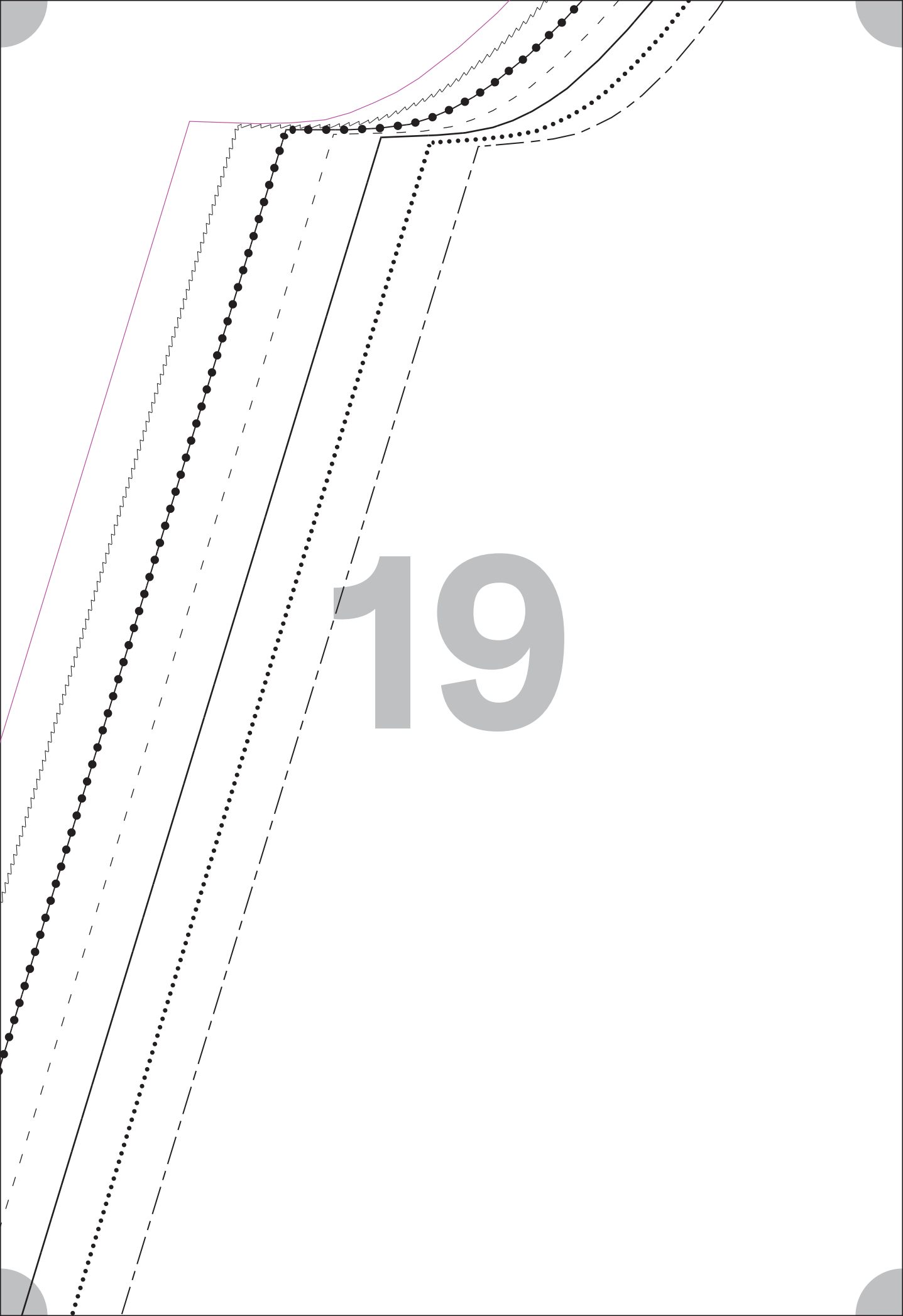
15

16

17

18





19

**Self
made®**

DIY2401

PART 2

BACK

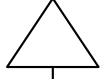


x1

INCL. SEAM ALLOWANCE

20

FOLD LINE



Self made®

DIY2401

PART 1

FRONT



x 1

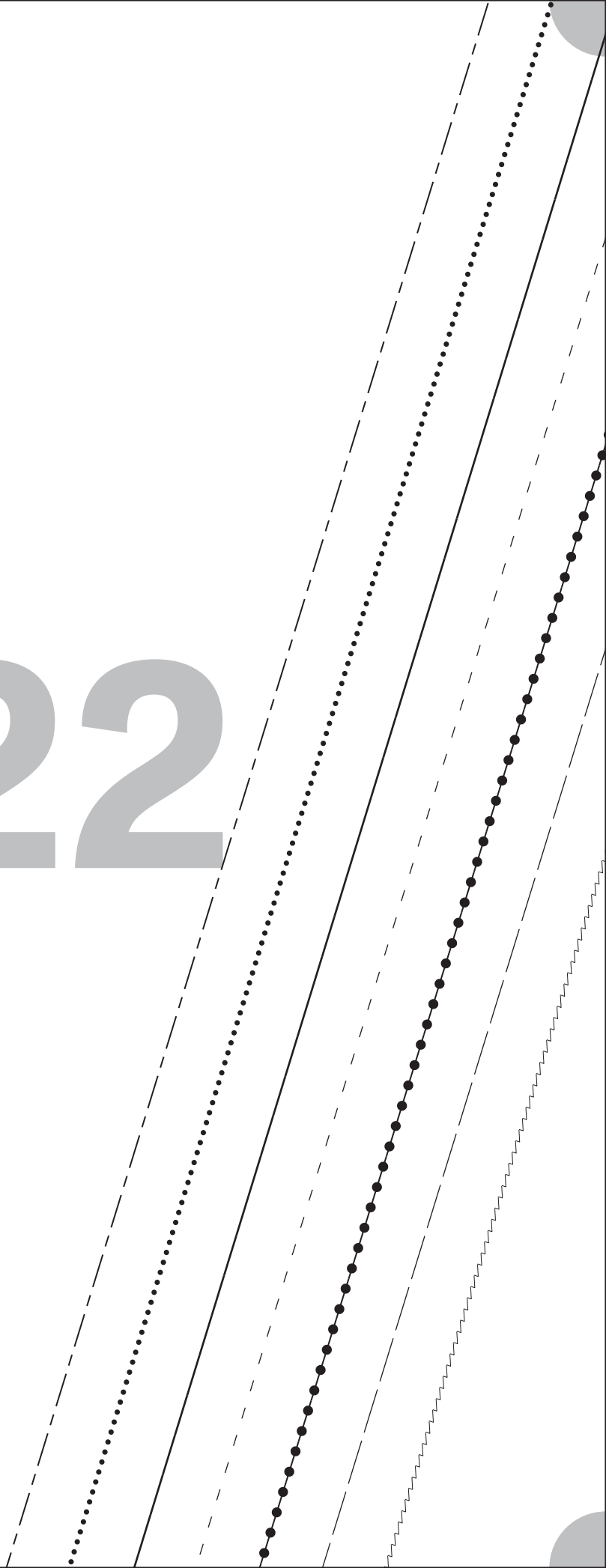
INCL. SEAM ALLOWANCE

21

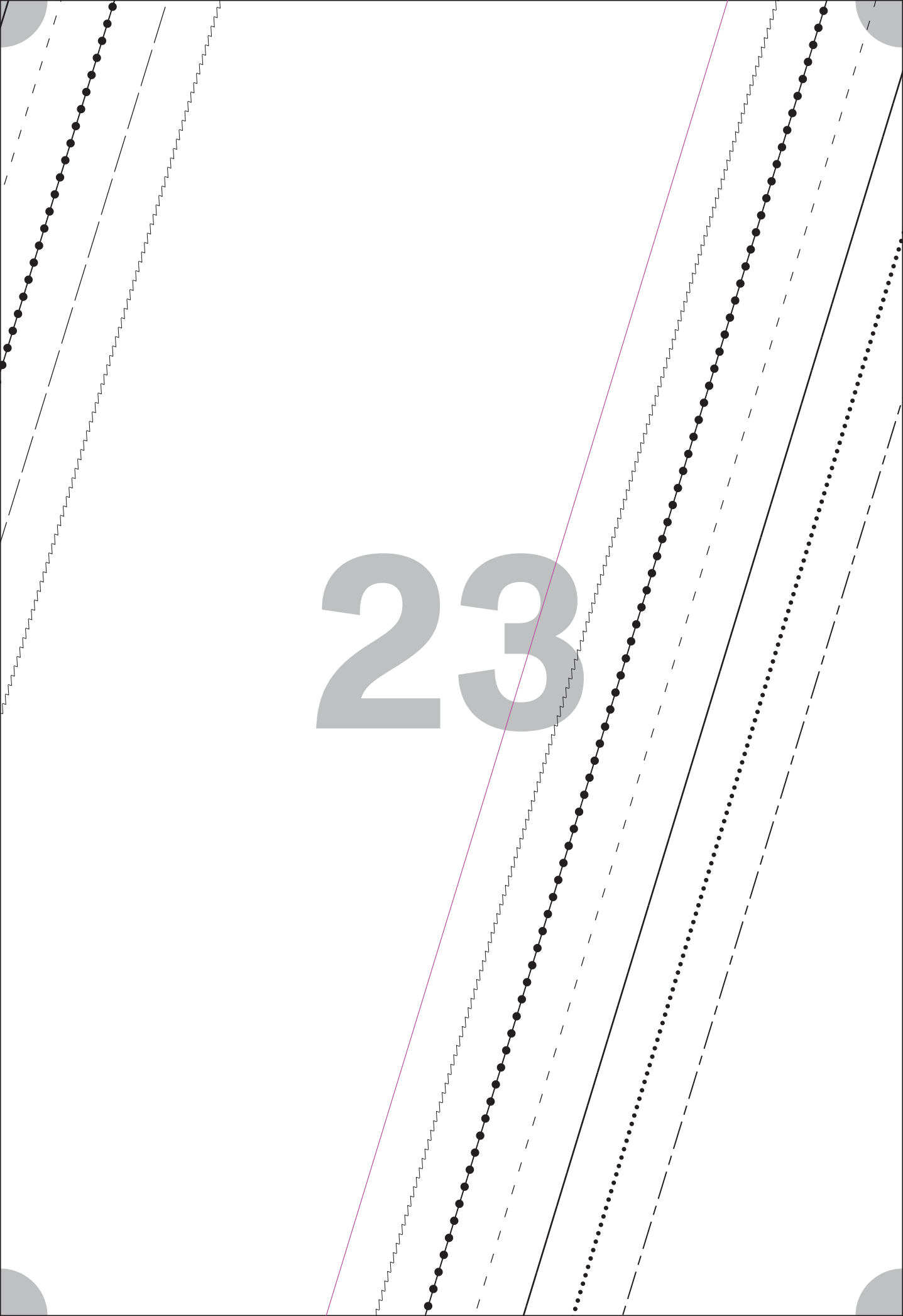
FOLD LINE



22



23

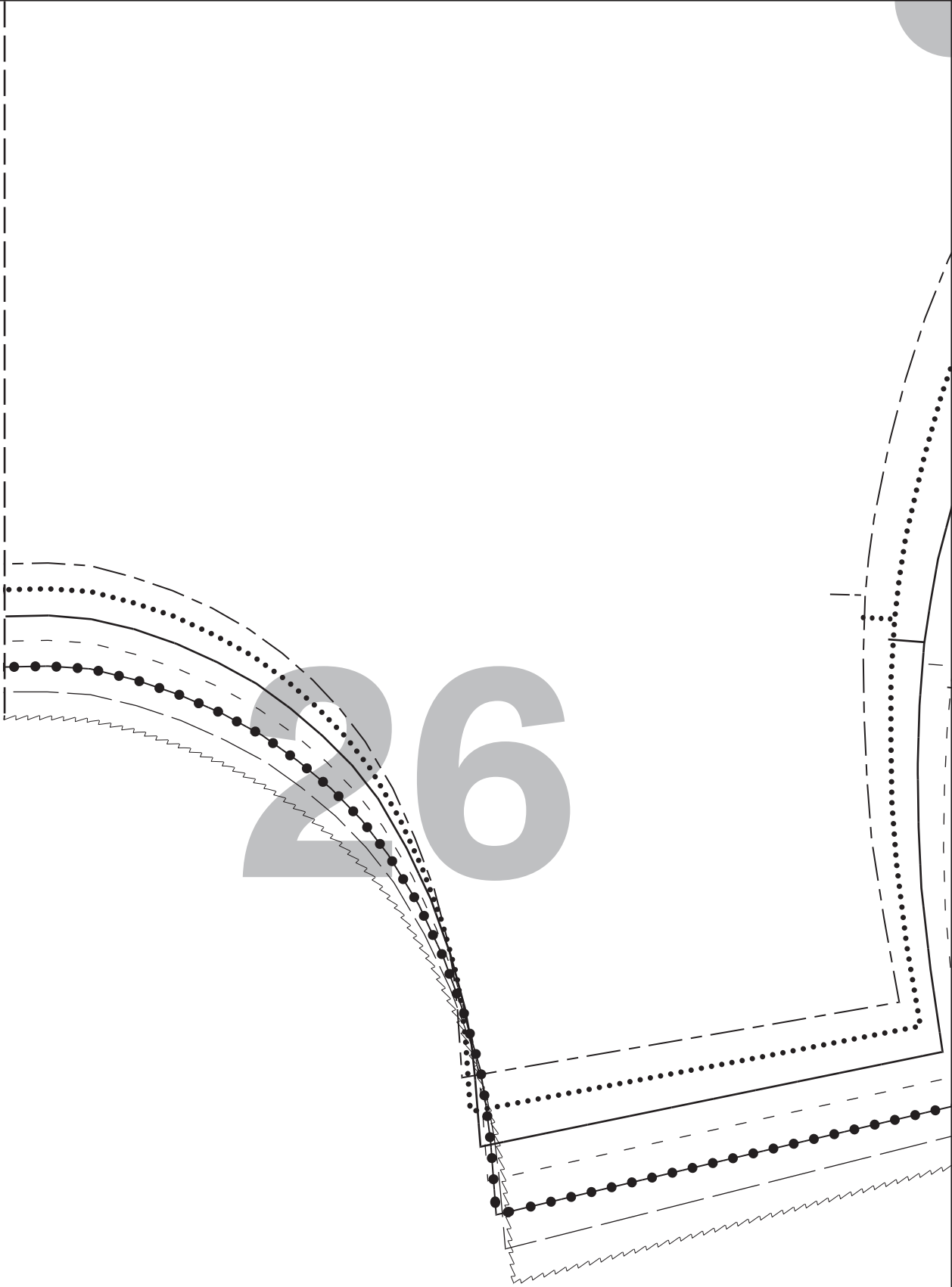


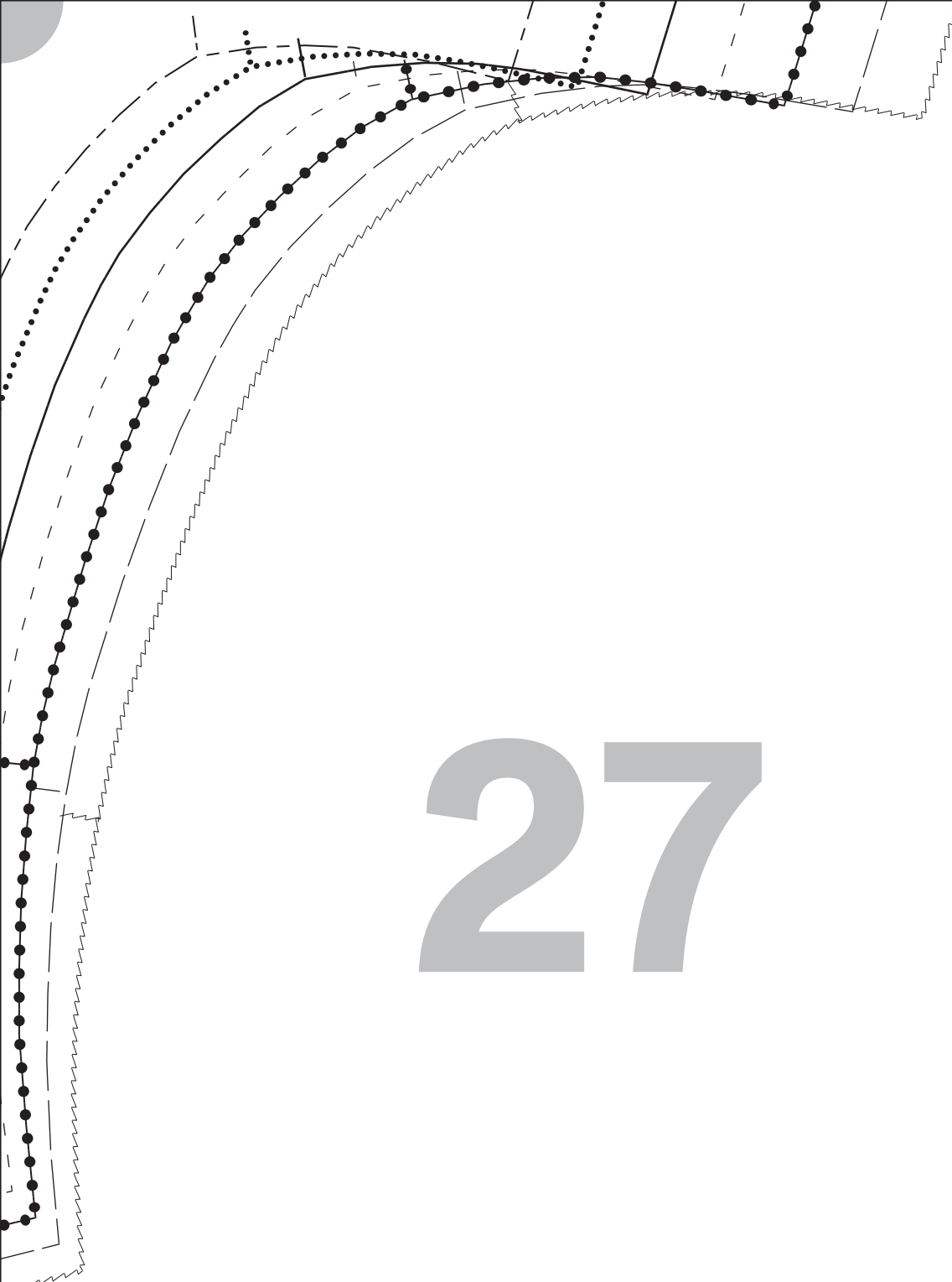


24

25

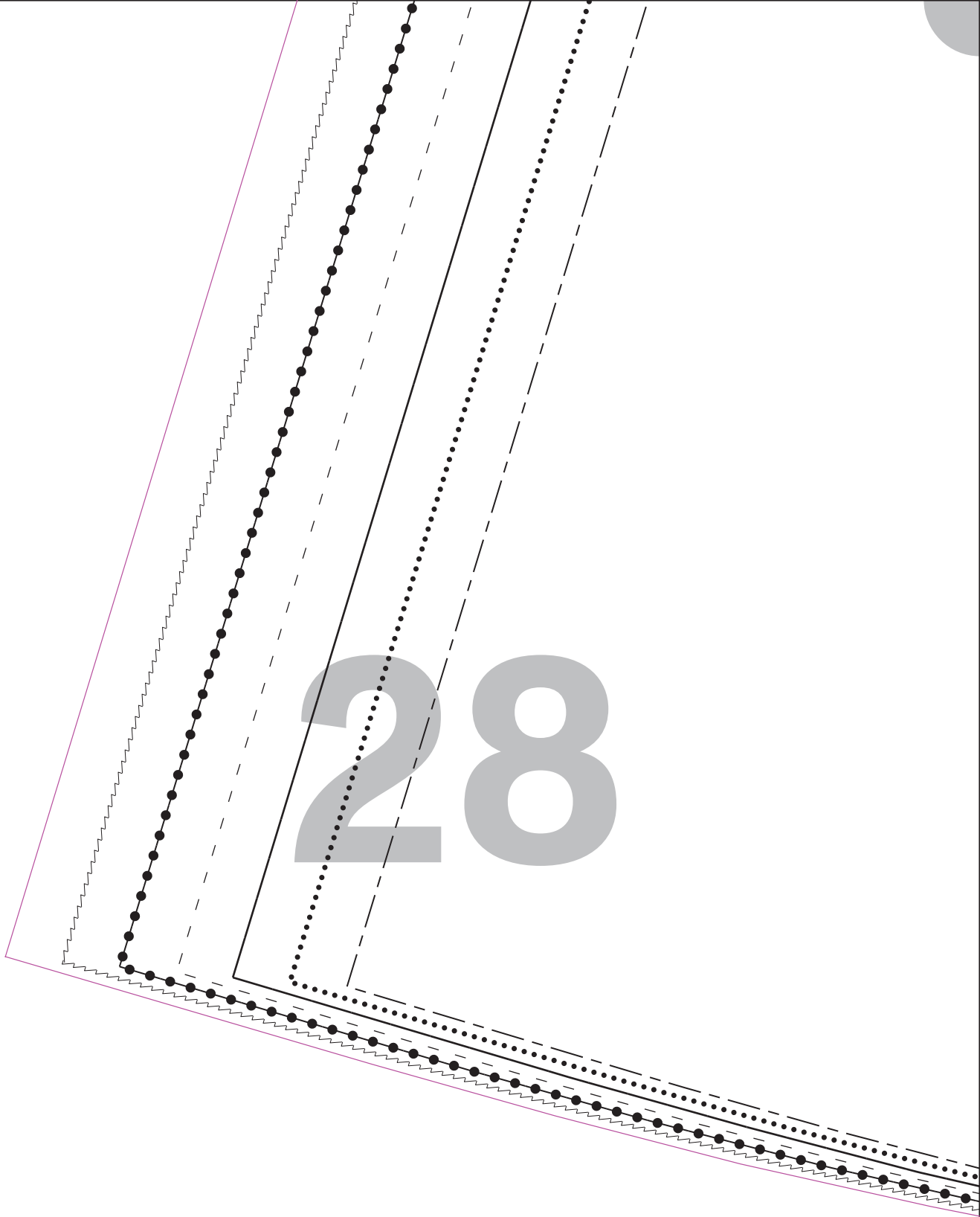
26



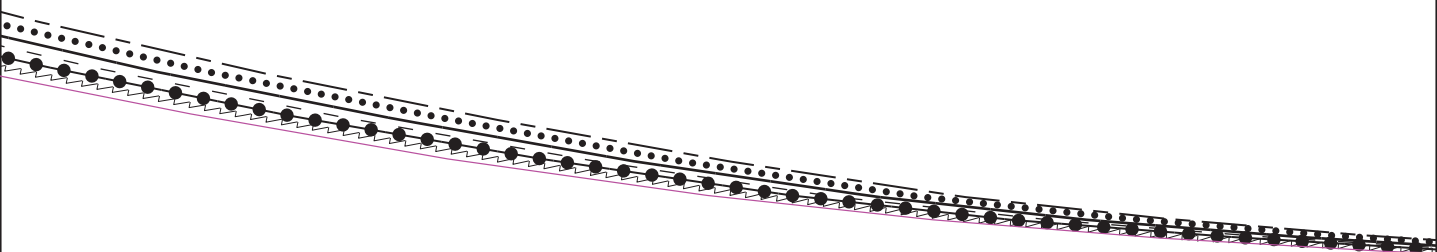


27

28



29



30