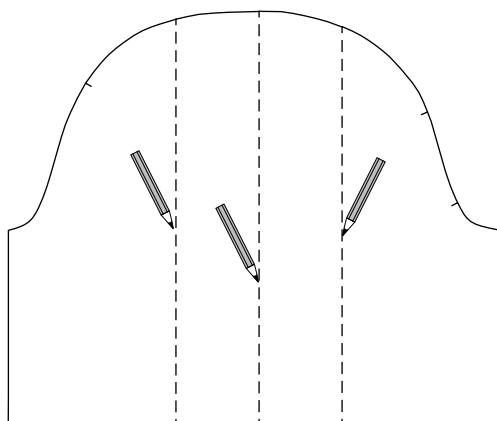


MAKE YOUR OWN RUFFLES

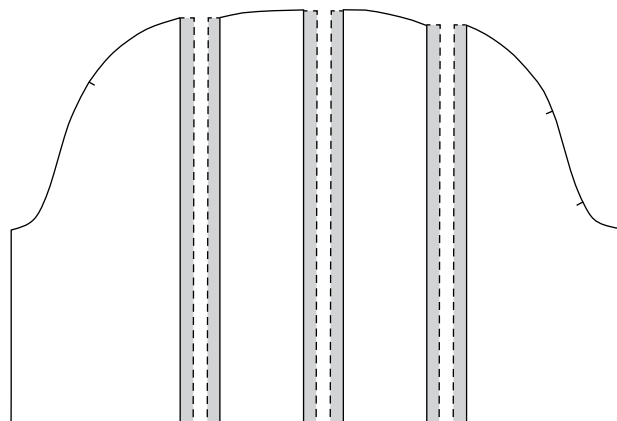


FREE
DIY

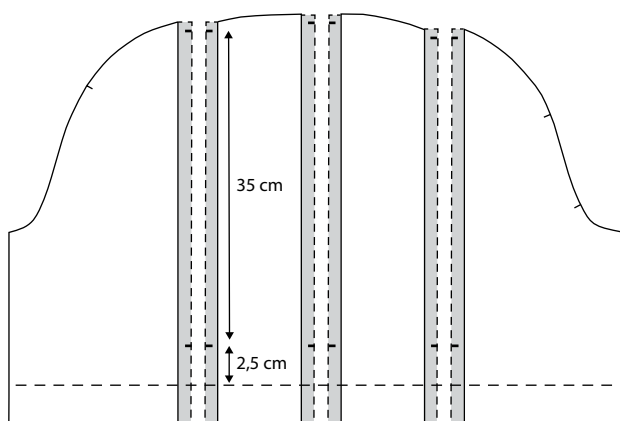
By the way... You can make ruffles on ANYTHING. Add ruffles to clothes, bags, cushions, blankets, etc.



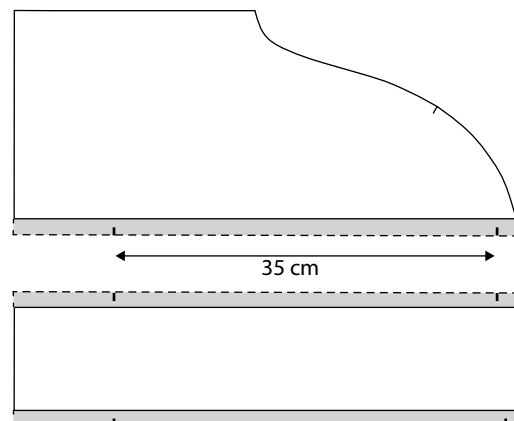
1. Draw lines on your pattern where you'd like to insert ruffles. In the example, we add three ruffles to the sleeve.



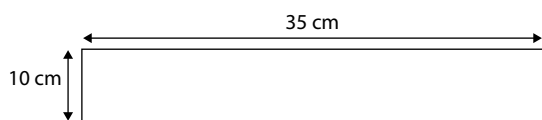
2. Subdivide the pattern. Add 1 cm seam allowance on each side of the cutting line.



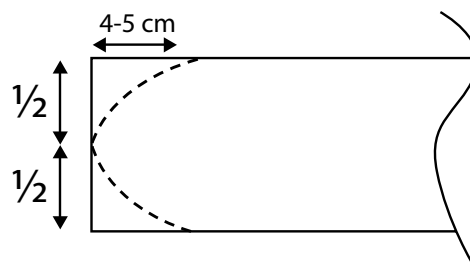
3. Measure the length of the line on which you wish to attach a ruffle. We recommend that the ruffle ends at hem stitching line. In this example, draw a notch 2.5 cm above the fold line. In this example, the ruffle ends 1 cm from the top of the sleeve. This way you avoid having to sew the ruffle into the armhole seam, see photo.



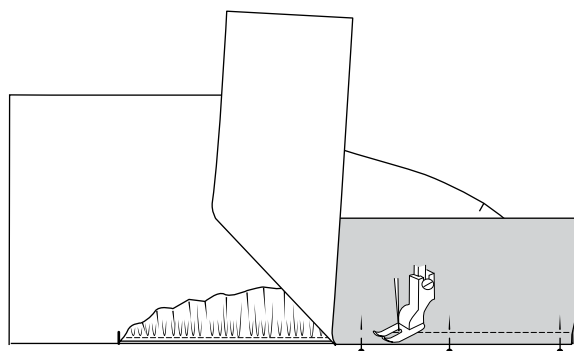
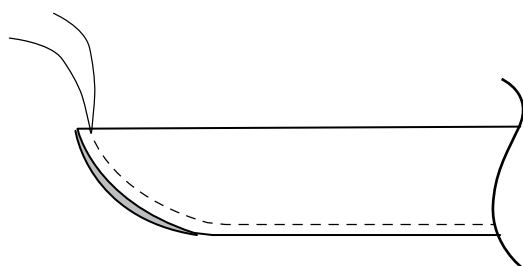
4. Calculating the ruffle length: $1.75 \times$ the length measured in step 3.
In this example, one of the lines measures 35 cm:
 $35 \times 1.75 = 61.25$ cm



5. Draw a rectangle the length measured x (width of ruffle $\times 2$) + 2 cm.
In this example, our finished ruffle width is 4 cm. Here the long sides of the rectangle measure 61.25 cm and short sides measure $(4 \times 2) + 2 = 10$ cm



6. Round off the end of the ruffle pattern piece if it is to end visibly on the garment (as in this example).



7. Fold the ruffle in half and press. If necessary, stitch 0.3-0.5 cm inside the raw edge to hold the parts together. Sew a gathering thread 0.5 cm from the raw edge. Gather to desired dimensions (in this example, 35 cm).

8. Place the ruffle on one fabric piece. Stitch firmly with a 0.5 cm seam. Lay the next fabric piece on top and sew the seam with 1 cm seam allowance. Repeat on all the seams where you would like a ruffle.

If you would like the ruffle to be precisely as long as the part to which it is sewn, do not round off the end of the ruffle pattern piece as shown in step 6.

If you wish to make a ruffle as a collar or on a cuff, first fold the ruffle piece in half lengthwise right sides together. Stitch the short ends, turn to the right side, press and then stitch a gathering thread along the raw edges.

