

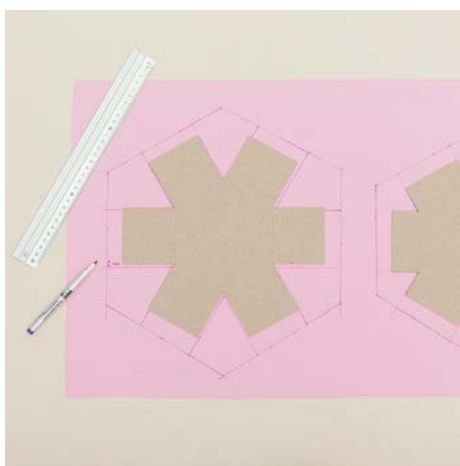
FABRIC-COVERED BOX WITH DIVIDERS

**MATERIALER:**

- Template for pedari box (no. 97104-97106)
- Fabric and Vliesofix bondaweb as specified on the package
- Batting for box lid
- Glue pen, Tape, Marker pen, Sewing gauge, Ruler
- Clips. We recommend Wonder clips
- Sewing thread and fine needle



1. Template A is for the box lining and B for the cover
Box = large notches - Box lid = small notches



2. Cut: Lay templates A and B on the wrong side of the fabric. Draw around the templates with a marker pen.



3A. Use the seam gauge to draw seam allowances. First draw 2 cm all the way around the template and then 1 cm notches.



3B. Use the seam gauge to draw seam allowances. First draw 2 cm all the way around the template and then 1 cm notches.



4. Cut out pieces along the lines.



5. Cut a piece of batting using template B box lid (NB: box lid only - not the sides).



6. Glue the batting to the outside of template B (box lid).



7A. Fold the box cover fabric (B) right sides together and sew all the corners.



7B. Sew 1 mm inside the drawn line to ensure that the fabric fits snugly.



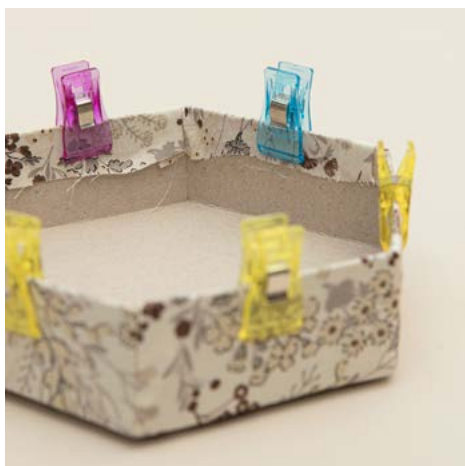
8. Sew the corners of the box lid (B) in the same way.



9. Pull the sewn covers onto B templates. Make sure the seam allowance lies in the same direction on all sides.



10. Fold the edge down into the box and box lid. Glue using a glue stick.



11. Attach clips. Remove clips when the glue is dry.



12. Cut a piece of Vliesofix interfacing using template A for both the box and the box lid (without seam allowance). Iron Vliesofix interfacing onto the wrong side of the lining fabric (the box and box lid are both lined).



13. Then pull off the paper.



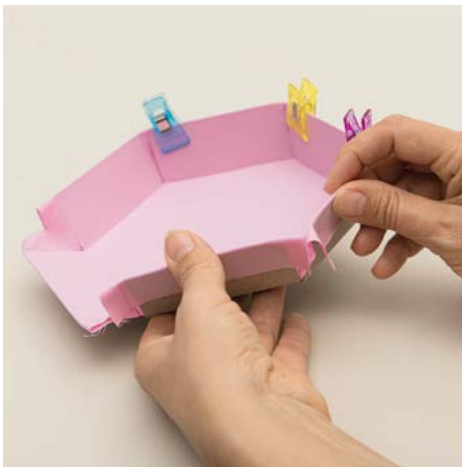
14. Now place the fabric with the Vliesofix on the wrong side against A templates (the side with text embossed on it)



15. Iron on the fabric.



16. Fold a 2 cm seam allowance around the "flaps". Glue using a glue stick.



17. Fold up the sides of the inner box, turn the seam allowance to the same side, and firmly tape the seam allowance or use clips.



18. Insert the inner box into the outer box. If necessary, use clips to hold them. Do the same with the box lid.



19. Sew the two parts together with small overcast stitches. Sew with a fine needle.



20. Dividers: Place the two templates on the wrong side of the fabric and draw 1.5 cm seam allowance around them. Cut the fabric pieces. Cut a piece of Vliesofix interfacing for both dividers (no seam allowance). Iron Vliesofix onto the wrong side of the fabric and pull off the paper. Lay the fabric with Vliesofix on the wrong side against the templates and iron. Fold the seam allowance around the templates and glue using a glue stick. Fold the dividers. Sew them together with overcast stitches.



21. Put the dividers into the box.