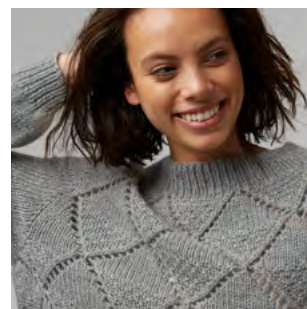
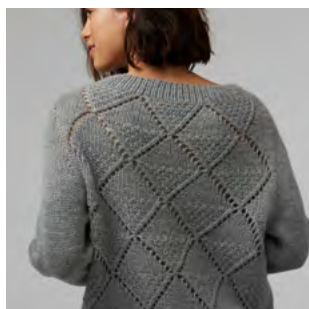


#NOORDINARYWEDNESDAY

no ordinary wednesday



♥ A SIMPLE AND ALSO VERY ORIGINAL SWEATER WITH A DIAMOND LACE PATTERN ON FRONT AND BACK. THE DESIGN IS WORKED IN THE ROUND FROM THE TOP DOWN – WHICH ELIMINATES MOST OF THE FINISHING WORK. FOLLOW THE ADVICE IN THE PATTERN AND WORK THE RIB ON A SMALLER NEEDLE FOR A NICE FIT, AS THERE WILL NOT BE MADE MANY INCREASES FOR FRONT AND BACK ON THE YOKE, INCREASES ARE MOSTLY ON THE SLEEVES. FOR AN EXPERIENCED KNITTER A PROJECT LIKE THIS IS A PIECE OF CAKE.

#NOORDINARYWEDNESDAY

no ordinary wednesday

ABBREVIATIONS:

st(s) = stitch(es)
k = knit
p = purl
RS = right side
WS = wrong side
tog = together
sl = slip stitch(es) purl-wise

M1 = Make 1 increase – lift the chain between the stitches onto the left needle and knit it through the back loop

decreases = Sleeve decreases: K2, k2tog, knit to 2 sts before marker, k2tog through the back loops

Note: Both sizes start with the same number of stitches. Increases will be worked to differentiate the two sizes.

PATTERN:

Cast on 108 sts on UK size 7 (4½ mm), 60 cm circular needle. Join in the round and place a marker for the beginning of the round. Work 5 cm of k1, p1 rib.

Change to a UK size 5 (5½ mm), 80 cm circular needle. Work 1 round of stockinette stitch while increasing 10 sts evenly across the round and also placing the following markers: 4 sts [sleeve], marker, 55 sts [front], marker, 4 sts [sleeve], marker, 55 sts [back]. There now a total of 118 sts.

Now work the first round of the pattern, while working increases on the sleeves as follows:

K1, M1, k2, M1, k1, marker, work charted pattern, repeat from * to * once more.

Work the next 3 rounds without increases on the sleeves, but following the chart on front and back.

Work increases on the sleeves as established on the next round, then work 3 rounds without increases.

Now work increases on the sleeves every other round until there are 44 sts on each sleeve. There are still 55 sts on front and back.

Now divide the work as follows:

Place the sleeve sts on stitch holders and cast on 18 [36] new sts, placing a stitch marker in the middle of these new sts, continue in pattern across the front with an edge stitch on either side, place the sleeve sts on a stitch holder, cast on 18 [36] new sts, placing a stitch marker in the middle of these new sts, continue in pattern across the back with an edge stitch on either side. The front and back have now been "expanded" with 9 [18] sts on either side incl. edge sts, meaning that 2 sts on each side will be worked in stockinette stitch throughout.

Continue in the charted pattern until the work measures 53 [54] cm. Change to a UK size 7 (4½ mm) circular needle and work k1, p1 rib until the work measures 59 [60] cm. Bind off.

SLEEVES:

Place the sleeve sts on a UK size 5 (5½ mm), 40 cm circular needle and pick up and knit 9 [18] sts along one side the new sts under the sleeve, place a marker, pick up and knit 9 [18] more sts along the other side. There are a total of 62 [80] sts on the needle. Join in the round and work in stockinette stitch, while working sleeve decreases as described above in the abbreviations every 10th [4th] round a total of 6 [15] times. There are now 50 sts left.

Change to double-pointed needle [or used the Magic Loop technique] as the number of sts reduces. Continue straight until the sleeve measures 36 cm from the armhole. Work a round of stockinette stitch while decreasing 10 sts evenly across the round. There are 40 sts left. Change to UK size 7 (4½ mm), 60 cm double-pointed needles and work 5 cm of k1, p1 rib. Bind off.

Work the second sleeve the same way as the first.

FINISHING:

Weave in all ends and lightly press the finished work.

SIZES

XS/S [M/L]

MEASUREMENTS

Chest ½:
55 [65] cm
Length:
59 [60] cm

YARN

Warm hearted FRAYA
100 % organic wool
50 g = 100 m

YARDAGE

450 [550] g

GAUGE

In stockinette stitch on a UK size 5 (5½ mm) needles: 16 sts x 21 rows = 10 cm x 10 cm

In lace pattern on a UK size 5 (5½ mm) needles: 14 sts x 24 rows = 10 cm x 10 cm

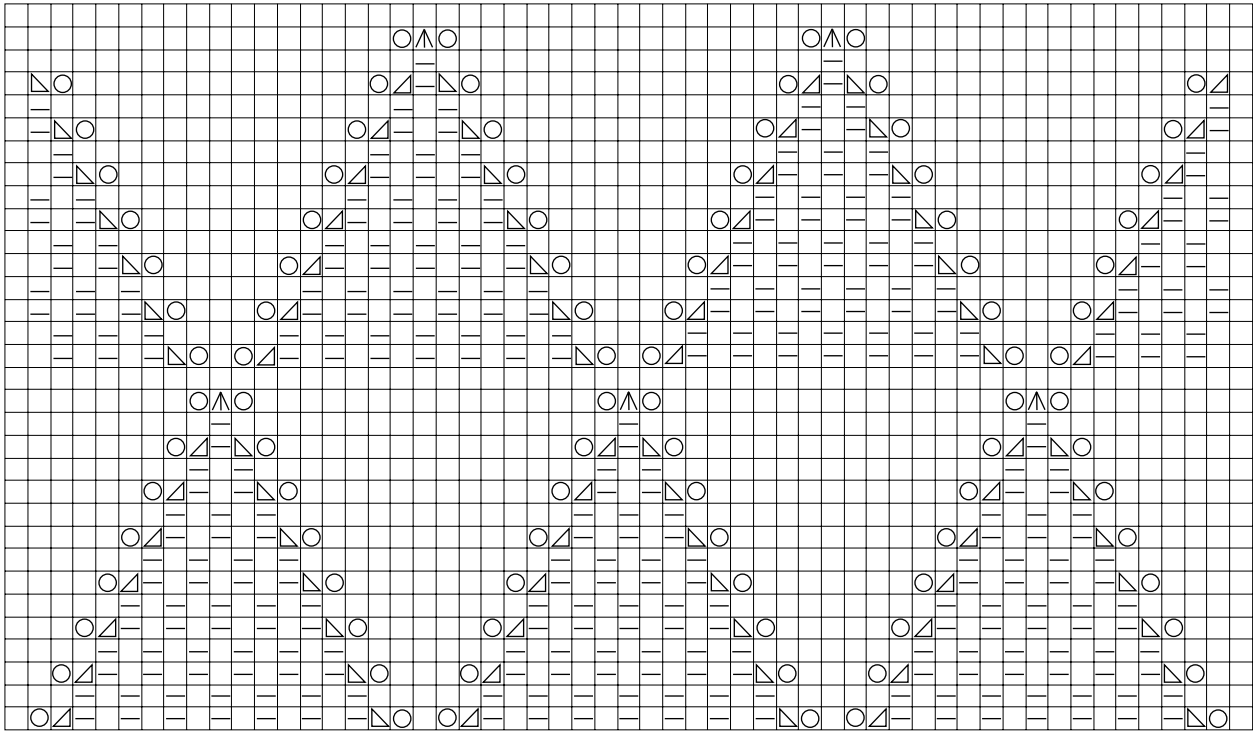
SUGGESTED NEEDLE SIZE

Circular needles UK size 7 (4½ mm), 60 cm, UK size 5 (5½ mm), 80 cm and 40 cm circular needles or double-pointed needles UK size 7 (4½ mm) and UK size 5 (5½ mm)

Please note: The needle sizes given above are only suggestions. The size of the needles you need depends on your personal gauge. If you knit firmly you might need a large needle size, if you knit loosely you might need a smaller needle size.

NOTIONS

Stitch markers



□ Knit

▤ K2tog

▨ Purl

▣ k2tog through the back loops

○ Yo - on next row, knit all yo's

▴ Insert the right needle knitwise through the front of the next stitch on the left needle, and slip it onto the right needle. Knit the next two stitches together, then lift the first stitch over.

