

#NOTYOURAVERAGESWEATER

not your average sweater



FRAYA[®]



♥ A FAST KNIT ON LARGE NEEDLES. THE FRONT REQUIRES A BIT ON CONCENTRATION, BUT ONCE YOU GET THE HANG OF IT, IT IS NOT A CHALLENGING AS IT MIGHT LOOK. THE TECHNIQUES USED ARE A SIMPLE EYELET PATTERN AND CABLES, AS WELL AS INCREASES AND DECREASES THAT SHAPE THE FRONT. IT MIGHT BE HELPFUL TO USE A DIFFERENT YARN THAN COMFY WHEN DOING THE FINISHING WORK, AS IT QUITE EASILY 'BREAKS'. THIS IS NOT BECAUSE THE YARN IS OF POOR QUALITY, BUT BECUASE IT IS SPUN IN A SOFTER WAY THAN OTHER YARNS.



#NOTYOURAVERAGESWEATER

not your average sweater

ABBREVIATIONS:

st[s] = stitch[es]
k = knit
p = purl
RS = right side
WS = wrong side
tbl = through the back loop
sl = slip stitch[es] purl-wise

tog = together
Selv = Selvedge stitch, knit the first stitch of every row through the back loop and slip the last stitch purl-wise from the left to the right needle with the yarn held in front

PEACOCK PATTERN: (DIVISIBLE BY 13 STS)

Row 1: Knit.**Row 2:** Purl.**Row 3:** Knit.**Row 4:** Purl.**Row 5:** k4tog, *yarn over, k1* 5 times, yarn over, k4tog tbl.**Row 6:** Purl.

The sweater is worked flat from the bottom up. Front and back are worked separately and then the sleeve are worked.

BACK:

Cast on 59 [65] 69 [77] sts on a UK 2 [7 mm] needle.

Row 1: Purl.**Row 2:** Knit.**Row 3:** Purl.

Now work in pattern as follows:

Row 4: 1 selv, purl 7 [10] 12 [16] sts, *k4tog, [yarn over, k1] 5 times, yarn over, k4tog tbl, p2*, repeat from * to * once more, k4tog, [yarn over, k1] 5 times, yarn over, k4tog tbl, purl 7 [10] 12 [16] sts, 1 selv.

Row 5: 1 selv, knit 7 [10] 12 [16] sts, p13, k2, p13, k2, p13, knit 7 [10] 12 [16] sts, 1 selv.

Row 6: 1 selv, purl 7 [10] 12 [16] sts, k13, p2, k13, p2, k13, purl 7 [10] 12 [16] sts, 1 selv.

Row 7: 1 selv, knit 7 [10] 12 [16] sts, p13, k2, p13, k2, p13, knit 7 [10] 12 [16] sts, 1 selv.

Row 8: 1 selv, purl 7 [10] 12 [16] sts, k13, p2, k13, p2, k13, purl 7 [10] 12 [16] sts, 1 selv.

Row 9: 1 selv, knit 7 [10] 12 [16] sts, p13, k2, p13, k2, p13, knit 7 [10] 12 [16] sts, 1 selv.

Repeat Row 4 – 9 for a total of 9 pattern repeats. The work now measures approx. 34 cm. Continue in pattern as established, while binding off 3 [4] 4 [5] sts for the armholes at the beginning of the next 2 rows. Then decrease 1 [1] 1 [2] sts at both ends of the work every other row a total of 2 [4] 5 [4] times. There are 49 [49] 51 [51] sts left on the needle.

Continue straight in pattern until the work measures approx. 51 [52] 53 [54] cm.

Neckline:

Work 18 [18] 19 [19] sts in pattern, turn.

Sl1, work to end of row in pattern.

Work 16 [16] 17 [17] sts in pattern, turn.

SIZES

XS [S] M [L]

MEASUREMENTS

Chest ½

48 [51] 53 [57] cm

Length

55 [58] 59 [60] cm

YARN

Comfy Fraya

50% Wool, 40% Acrylic, 10% Alpaca

50 g = 80 m

YARDAGE

400 [450] 500 [550] g

GAUGE

For the peacock pattern on a UK 2 [7 mm] needle: 11 sts x 16 rows
 = 10 cm x 10 cm.

SUGGESTED NEEDLE SIZE

Circular needles [60 cm] and double pointed needles UK size 4 [6 mm] and 2 [7 mm]

Please note: The needle sizes given above are only suggestions. The size of the needles you need depends on your personal gauge. If you knit firmly you might need a large needle size, if you knit loosely you might need a smaller needle size.

NOTIONS

Stitch holders

Sl1, work to end of row in pattern.

Strik 13 [13] 14 [14] sts in pattern, turn.

Bind off all 13 [13] 14 [14] sts.

Place the centre 13 sts as well as the 5 sts at one side on a stitch holder, and finish the other side in the same way as the first, so there ends up being 23 sts on the stitch holder and 13 [13] 14 [14] bound off sts for each shoulder.

FRONT:

Cast on 59 [65] 69 [77] sts on a UK 2 [7 mm] needle.

Row 1: Purl.

Row 2: Knit.

Row 3: Purl.

Now work in pattern as follows:

Row 4: 1 selv, purl 3 [6] 8 [12] sts, k4tog, [yarn over, k1] 5 times, yarn over, k4tog tbl, p1, k4, p1, k4tog, [yarn over, k1] 5 times, yarn over, k4tog tbl, purl 3 [6] 8 [12] sts, 1 selv.

Row 5: 1 selv, knit 3 [6] 8 [12] sts, p13, k1, p4, k1, p13, k1, p4, k1, p13, knit 3 [6] 8 [12] sts, 1 selv.

Row 6: 1 selv, purl 3 [6] 8 [12] sts, k13, p1, k4, p1, k13, p1, k4, p1, k13, purl 3 [6] 8 [12] sts, 1 selv.

Row 7: 1 selv, knit 3 [6] 8 [12] sts, p13, k1, p4, k1, p13, k1, p4, k1, p13, knit 3 [6] 8 [12] sts, 1 selv.

Row 8: 1 selv, purl 3 [6] 8 [12] sts, k13, p1, k4, p1, k13, p1, k4, p1, k13, purl 3 [6] 8 [12] sts, 1 selv.

Row 9: 1 selv, knit 3 [6] 8 [12] sts, p13, k1, p4, k1, p13, k1, p4, k1, p13, knit 3 [6] 8 [12] sts, 1 selv.

Work Row 4 – 9 again, but work Row 4 as described in Row 1 of the chart; meaning a cable is worked and everything else is worked as established.

The set-up for the pattern has now been completed. Now begin working the chart, starting from Row 1 and working back and forth as described. Stitches are decreased along the sides, and these are being compensated for in the centre panel, meaning that the number of sts on the needle remains the same.

Work the entire chart purling the side stitches as described. The work now measures approx. 34 cm. Now continue in pattern, while working straight with no increases or decreases. In other words: Knit the knit sts and purl the purl sts, and work the peacock pattern with a cable every 6th row.

Armholes:

Bind off 3 [4] 4 [5] sts for the armholes at the beginning of the next 2 rows. Then decrease 1 [1] 1 [2] sts at both ends of the work every other row a total of 2 [4] 5 [4] times. There are 49 [49] 51 [51] sts left on the needle. Now work straight in pattern until the front measures approx. 51 [52] 53 [54] cm

Neckline:

Work 18 [18] 19 [19] sts in pattern, turn.

Sl1, work to end of row in pattern.

Work 16 [16] 17 [17] sts in pattern, turn.

Sl1, work to end of row in pattern.

Work 14 sts in pattern, turn.

Sl1, work to end of row in pattern.

Strik 13 [13] 14 [14] sts in pattern, turn.

Sl1, work to end of row in pattern.

Work 4 more rows with 13 [13] 14 [14] sts and bind off on the last row.

Place the centre 13 sts as well as the 5 sts at one side on a stitch holder, and finish the other side in the same way as the first, so there ends up being 23 sts on the stitch holder and 13 [13] 14 [14] bound off sts for each shoulder.

SLEEVES:

Cast on 27 [27] 29 [31] sts on a UK 4 [6 mm] needle. Work back and forth in k1, p1 ribbing for 6 rows. Change to a UK 2 [7 mm] needle and purl the next row [which is a WS row] while at the same time increasing 24 [26] 26 [28] sts evenly across the row. There are now 51 [53] 55 [59] sts on the needle. Now work in pattern as follows:

Row 1: 1 selv, purl 18 [19] 20 [22] sts, k13, purl 18 [19] 20 [22] sts, 1 selv.

Row 2: 1 selv, knit 18 [19] 20 [22] sts, p13, knit 18 [19] 20 [22] sts, 1 selv.

Rows 3– 4: Work as Row 1– 2.

Row 5: 1 selv, purl 18 [19] 20 [22] sts, k4tog, [yarn over, k1] 5 times, yarn over, k4tog tbl, purl 18 [19] 20 [22] sts, 1 selv.

Row 6: Work as Row 2.

Repeat Row 1 – 6 once more.

Continue in the peacock pattern, while at the same time working a decrease at the beginning and end of every 12th row until there are 41 [43] 45 [49] sts on the needle. Work decreases as follows:

1 selv, p2tog tbl, work in pattern to the last 3 sts, p2tog, 1 selv.

Repeat the peacock pattern a total of 11 times. The sleeve now measures approx. 44 cm.

Bind off for the armhole as follows:

Bind off 3 sts at the beginning of the next 2 rows. Continue in pattern while working a decrease at the beginning and end of every other row until there are 21 [21] 23 [25] sts left on the needle. Bind off all remaining sts on the next WS row.

Work the second the sleeve the same way as the first.



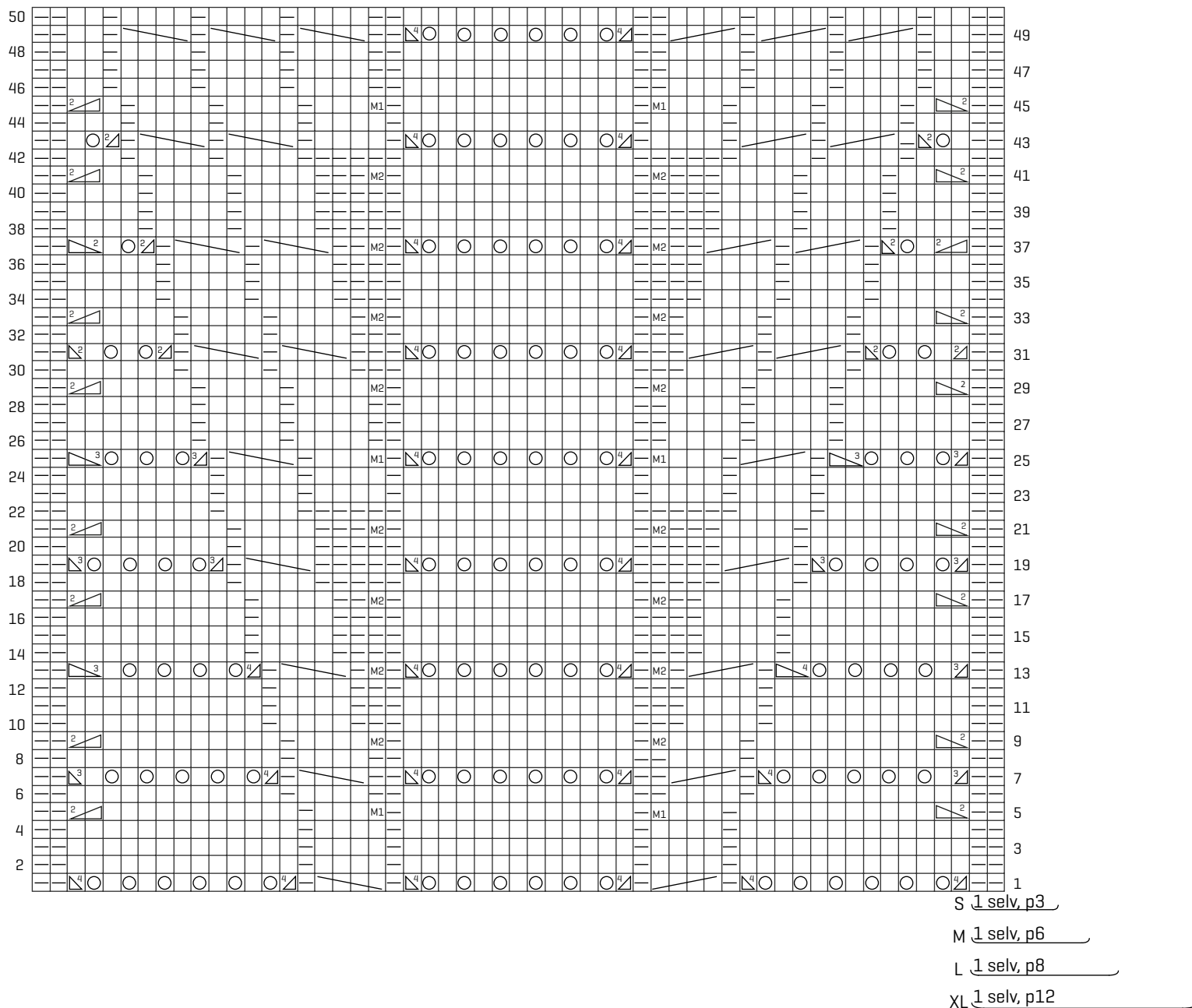
NECK EDGE:

Lightly steam the finished work and weave in all ends. Place the front and back shoulders together and sew them together using neat stitches like for example mattress stitch.

Start at the left side of the back neck edge and place the 23 centre sts from the stitch holder onto a UK 6 (6 mm) circular needle. Continue round by picking up and knitting sts. Pick up and knit 2 sts along the back, 5 sts along the front, knit the 23 sts from the front stitch holder, pick up and knit 5 more sts from the front neck edge and finally 2 sts from the back. Join in the round and work k1, p1 ribbing for 6 rounds. Bind off.

FINISHING:

Sew the sleeves in the armholes. Sew sleeve and side seams.



- Knit on the RS, purl on the WS.
- Purl on the RS, knit on the WS.
- Yarn over.
- Decrease: K2tog.
- Decrease: K2tog tbl.
- Decrease: K3tog.
- Decrease: K3tog tbl.
- Decrease: K4tog.
- Decrease: K4tog tbl.

- M1 Increase: K1, lift the strand between sts onto the needle and purl it through the back loop. On the WS, purl the knit stitch and knit the purl stitch.
- M2 Increase: P1, lift the strand between sts onto the needle and purl it through the back loop. On the WS, knit both sts.
- Cable: Slip next 2 sts onto cable needle and hold to back of work, k2, then k2 from cable needle.
- Cable: Slip next 2 sts onto cable needle and hold to front of work, k2, then k2 from cable needle.