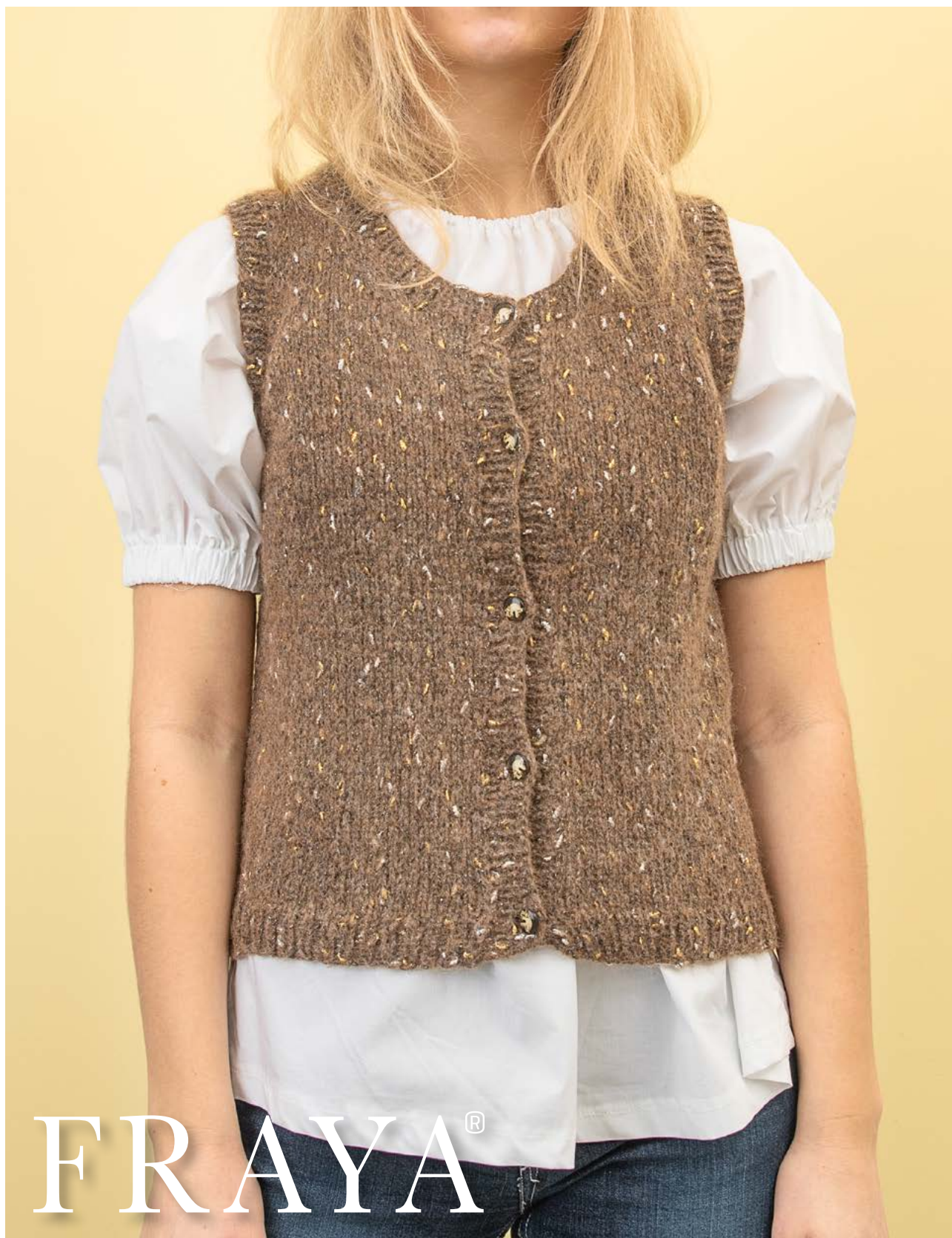


#GRANNYSWAISTCOAT

Grannys waistcoat



♥ HERE IS THE VEST YOU DO NOT WANT TO LIVE WITHOUT! A SIMPLE DESIGN WITH LOVELY FLECKS OF GOLD AND SILVER - WORKED IN STOCKINETTE STITCH WITH PRETTY DETAILS AND SWEET BUTTONS FOR THE PERFECT FINISHING TOUCH. A PERFECT PROJECT FOR THE INTERMEDIATE KNITTER - GO, GO, GO!

#GRANNYSWAISTCOAT

Grannys waistcoat

ABBREVIATIONS:

st(s)	= stitch(es)
k	= knit
p	= purl
RS	= right side
WS	= wrong side
tbl	= through the back loop(s)
tog	= together
Selv	= Selvedge stitch

Designed by Hedahl Knit

Directions:

The vest is worked back and forth from the bottom up.

Body:

Cast on 139 [151] 163 [181] 203 sts on a UK size 7 [4.5 mm] needle. The first and last stitch of every row is worked as selvedge sts [selv], which are knitted on both RS and WS rows.

Work in rib:

Row 1 [WS]: K1 [selv], *p1, k1*, repeat from * to * to the last 2 sts p1, k1 [selv].

Row 2 [WS]: K1 [selv], *k1, p1*, repeat from * to * to the last 2 sts, k1, k1 [selv].

Work Row 1 and 2 until the rib measures 4 [4] 5 [5] 5 cm.

Change to a UK size 5 [5.5 mm] needle and continue in stockinette stitch, while placing the following markers on the first row: Work 35 [38] 41 [45] 51 sts, place marker, work 69 [75] 81 [91] 101 sts, place marker, work to end of row.

Continue in stockinette stitch until the body measures 31 [31] 32 [34] 35 cm. End on a WS row.

Now divide the work for fronts and back and finish each section separately.

Begin by working the right front, then the back and then the left front. Let the other sections rest on the needle or on a stitch holder.

Right front:

Row 1 [RS]: Knit to 6 sts before marker, k2tog, k4, turn.

Row 2 [WS]: Purl to end of row.

Repeat Row 1 and 2 a total of 10 [10] 11 [13] 14 times. There are now a total of 25 [28] 30 [32] 37 sts on the front.

Continue straight in stockinette stitch until the work measures 39 [40] 41 [44] 46 cm. End on a WS row.

Now work decreases for the neck edge:

On the next row [RS], place the first 5 [5] 6 [7] 8 sts on a stitch holder, *k3, k2tog tbl, knit to end of row

Purl 1 row*.

Repeat from * to * a total of 7 [7] 7 [8] 8 times. There are now a total of 13 [16] 17 [17] 21 sts left on the right front.

Work straight in stockinette stitch until the front measures 50.5 [51.5] 53.5 [56.5] 58.5 cm. End on a WS row.

Now work the slant of the shoulder using short rows as follows:

Row 1 [RS]: Knit to the last 5 [6] 7 [7] 8 sts, turn.

Row 2 [WS]: Yarn over, purl to end of row.

Row 3: Knit to the last 10 [12] 13 [13] 15 sts (do not count the yarn over), turn.

Row 4: Yarn over, purl to end of row.

Row 5: Knit to the first yarn over, knit yarn over and next stitch tog tbl (to avoid hole at turn), repeat at next yarn over, knit to end of row.

Cast off all sts from the WS.

SIZES

S [M] L [XL] XXL

MEASUREMENTS

Chest circumference:

Approx. 92 [100] 108 [120] 132 cm

Total length:

Approx. 53 [54] 56 [59] 61 cm

YARN

Royal Fraya

34% baby alpaca + 33% polyamide +
22% viscose + 6% fine merino wool +
5% polyester

50 g = 130 m

YARDAGE

200 [250] 300 [350] 400 g

GAUGE

In stockinette stitch on UK size 5 [5.5 mm] needles:

15,5 sts x 24 rows = 10 cm x 10 cm

SUGGESTED NEEDLE SIZE

UK size 7 [4.5 mm] and UK size 5 [5.5 mm]

Please note: The needle sizes given above are only suggestions. The size of the needles you need depends on your personal gauge. If you knit firmly you might need a large needle size, if you knit loosely you might need a smaller needle size.

NOTIONS

Stitch markers

5 [5] 5 [6] 6 buttons [20 mm]

Stitch holders

Back:

Join yarn from the RS at the right edge of the back.

Row 1 [RS]: *K4, k2tog tbl, knit to the last 6 sts, k2tog, k4.

Row 2 [WS]: Purl.

Repeat Row 1 and 2 a total of 10 [10] 11 [13] 14 times. There are now a total of 49 [55] 59 [65] 73 sts on the back.

Work straight in stockinette stitch until the back measures 50.5 [51.5] 53.5 [56.5] 58.5 cm. End on a WS row.

Now finish the right and left side of the back separately.

Bind off for the neck edge while at the same time working the slope for the shoulder using short rows

Right back:

Row 1 [RS]: Knit 19 [22] 23 [25] 28 sts, place the next 11 [11] 13 [15] 17 sts on a stitch holder [for neck edge], turn.

Row 2 [WS]: Cast off 2 [2] 2 [3] 3 sts, purl to the last 5 [6] 7 [7] 8 sts, turn.

Row 3: Yarn over, knit to end of row.

Row 4: Cast off 2 [2] 2 [3] 2 sts, purl to the last 10 [12] 13 [13] 15 sts [do not count the yarn over], turn.

Row 5: Yarn over, knit to end of row.

Row 6: Cast off 2 [2] 2 [2] 2 sts, purl to the first yarn over, purl yarn over and next stitch tog tbl, repeat at next yarn over, purl to end of row.

Cast off all sts from the RS.

Left back:

Join yarn from the RS after the neck edge sts on the stitch holder.

Row 1 [RS]: Cast off 2 [2] 2 [3] 3 sts, knit to the last 5 [6] 7 [7] 8 sts, turn.

Row 2 [WS]: Yarn over, purl to end of row.

Row 3: Cast off 2 [2] 2 [3] 2 sts, knit to the last 10 [12] 13 [13] 15 sts [do not count the yarn over], turn.

Row 4: Yarn over, purl to end of row.

Row 5: Cast off 2 [2] 2 [2] 2 sts, knit to the first yarn over, knit yarn over and next stitch tog tbl, repeat at next yarn over, knit to end of row.

Cast off all sts from the WS.

Left front:

Join yarn from the RS.

Row 1 [RS]: K4, k2tog tbl, knit to end of row.

Row 2 [WS]: Purl to end of row.

Repeat Row 1 and 2 a total of 10 [10] 11 [13] 14 times. There are now a total of 25 [28] 30 [32] 37 sts on the front.

Continue straight in stockinette stitch until the work measures 39 [40] 41 [44] 46 cm. End on a RS row.

Now work decreases for the neck edge.

On the next row [WS], place the first 5 [5] 6 [7] 8 sts on a stitch holder, then purl to end of row.

Row 1 [RS]: Knit to the last 5sts, k2tog, k3.

Row 2 [WS]: Purl.

Repeat from * to * a total of 7 [7] 7 [8] 8 times. There are now a total of 13 [16] 17 [17] 21 sts left on the left front.

Work straight in stockinette stitch until the front measures 50.5 [51.5] 53.5 [56.5] 58.5 cm. End on a RS row.

Now work the slant of the shoulder using short rows as follows:

Row 1 [WS]: Purl to the last 5 [6] 7 [7] 8 sts, turn.

Row 2 [RS]: Yarn over, knit to end of row.

Row 3: Purl to the last 10 [12] 13 [13] 15 sts [do not count the yarn over], turn.

Row 4: Yarn over, knit to end of row.

Row 5: Purl to the first yarn over, purl yarn over and next stitch tog tbl [to avoid hole at turn], repeat at next yarn over, purl to end of row.

Cast off all sts from the RS.

Sew the shoulder seams from the RS. Weave in all ends.



Front edges:

Pick up and knit sts from the RS with a UK size 7 [4.5 mm] needle. Pick up and knit approx. 3 sts for every 4 rows along the right front edge. The total number of sts must be an even number.

Work 2 rows in k1, p1 rib.

Distribute the buttonholes on the next row as follows. The first buttonhole is placed after 1 cm. The next 4 [4] 4 [5] 5 buttonholes are spaced approx. 9,5 [10] 10 [8.5] 9 cm apart, the last buttonhole is placed approx. 1 [1] 1 [1] 1 cm from the end.

Work the buttonholes as follows: Cast off 2 sts. On the next row, cast on 2 new sts over where the sts were cast off using the backward loop method.

Continue back and forth in rib until the front edge measures 2.5 cm. Cast off in rib.

Work a rib edge along the left front edge the same as for the right front edge, only omitting the buttonholes.

Neck edge:

Knit the 5 [5] 6 [7] 8 sts from the right front stitch holder, using a UK size 7 [4.5 mm] needle, then pick up and knit sts needle along the neck edge, knit across the 11 [11] 13 [15] 17 sts on the back stitch holder, then continue picking up and knitting sts to the 5 [5] 6 [7] 8 sts on the left front stitch holder. The total number of sts must be an odd number.

Work in k1, p1 rib.

Continue back and forth in rib until the neck edge measures 2.5 cm. Cast off in rib.

Armhole edge:

Pick up and knit sts from the RS with a UK size 7 [4.5 mm] needle along the armhole edge. The total number of sts must be an even number.

Join in the round and work in k1, p1 rib for 2.5 cm. Cast off on rib.

Work the second armhole edge the same as the first.

Weave in all ends. Sew buttons along the left front edge across from the buttonholes.

