

#SANTASLITTLEHELPERHAT

# santa's little helper hat





#SANTASLITTLEHELPERHAT

# santa's little helper hat

## ABBREVIATIONS:

**st(s)** = stitch(es)  
**k** = knit  
**p** = purl  
**patt** = pattern  
**st st** = stocking st  
**dec** = decrease(s)

**rem** = remain(ing)  
**beg** = beginning

The hat is worked from the bottom up, first on circular needles and then on double pointed needles as you dec the number of sts.

## PATTERN:

Cast on 76 [96] sts with 2 strands of colour 1 on the UK size 7 [4½ mm], 40 cm circular needles.

Place a marker at the beg of the round. Work in rib, k1, p1, for 3 cm.

Change to the UK size 6 [5 mm] circular needles. Work 2 rounds of st st in colour 1 while dec 0 [1] st so 76 [95] sts rem. Start working the chart.

At the end you will have 20 sts left. Cut the yarn and pull the yarn end through the sts and weave in the end thoroughly.

## FINISHING:

Weave in all ends and block lightly. Make a pom-pom with the rem yarn and sew it on the top of the hat.

## SIZES

86/110 [XS/M]

## MEASUREMENTS

Circumference: 45 [55] cm

Lenght approx.: 48 [48] cm

## YARN

Mindful Fraya

100 % Wool

50 g = 350 m

## YARDAGE

Colour 1 50 g

Colour 2 50 g

## GAUGE

In 2 strands of Mindful Fraya 19 sts and 23 rows to 10 x 10 cm in patt on UK size 6 [5 mm] needles.

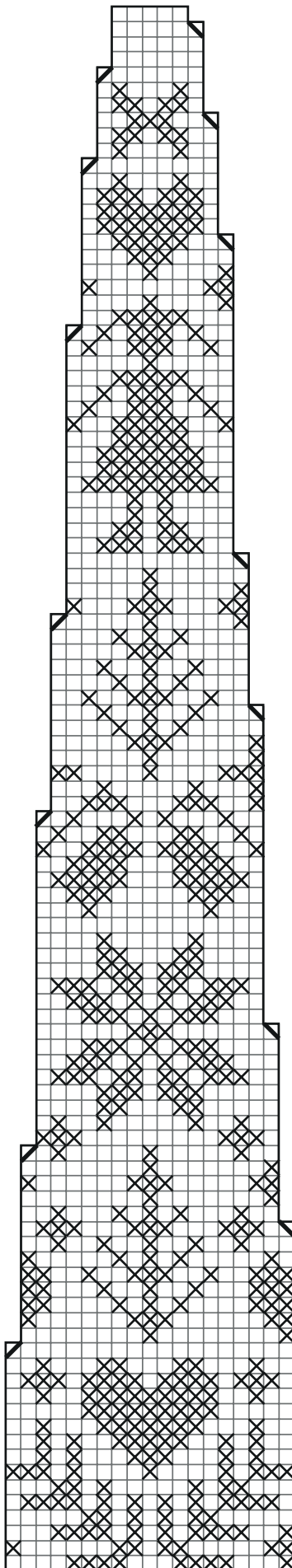
## SUGGESTED NEEDLE SIZE

UK size 7 and 6 [4½ and 5 mm] circular needles, 40 cm, UK size 6 [5 mm] double pointed needle

Please note: The needle sizes given above are only suggestions. The size of the needles you need depends on your personal gauge. If you knit firmly you might need a large needle size, if you knit loosely you might need a smaller needle size.

## NOTIONS

Markers



- ☒ Colour 2
- Colour 1
- ▤ k 2 together
- ▥ k 2 together in back loop

