

#SINGALONGHATANDSCARF

sing along hat and scarf



FRAYA[®]



#SINGALONGHATANDSCARF

sing along hat and scarf

ABBREVIATIONS:

st(s) = stitch(es)
k = knit
p = purl
tbl = through the back loop
tog = together
RS = right side
WS = wrong side

patt = pattern
beg = beginning
rep = repeat
dec = decrease(s)

SCARF

Cast on 59 sts on size 7 [4½ mm] needles and work in rib, *k1, p1*; rep from * to * until the last st, k1. On the WS *p1, k1*; rep from * to * until the last st, p1. Work a total of 7 rows of rib.

Change to the size 6 [5 mm] needles.

Work in patt according to chart 2 but with 2 edge sts on each side as follows:

On the RS: Slip the first 2 sts and k the last 2 sts.

On the WS: Slip the first 2 sts and p the last 2 sts.

Continue in patt with edge sts until the work measures 150 cm. Change to the size 7 [4½ mm] needles and work 7 rows of rib as in the beg of the work. Cast off all sts loosely.

Finishing:

Weave in all ends and block lightly.

HAT

Cast on 80 sts on size 7 [4½ mm], 40 cm circular needles or double pointed needles and work 8 rounds of rib, *k1, p1*.

Change to the size 6 [5 mm] needles.

Work in patt according to the chart until the work measures 19 cm, finish with a round 10 of the repeat.

k2tog, k1, p2; rep from * to * on the entire round. You now have 64 sts left.

k1, p2, k1; rep from * to * the entire round.

p2, k2; rep from * to * the entire round.

p1, k2, p1; rep from * to * the entire round.

k2, p2; rep from * to * the entire round.

Change to the size 6 [5 mm] double pointed needles and dec as follows:

k6, k2tog; rep from * to * the entire round.

K 1 round.

k5, k2tog; rep from * to * the entire round.

K 1 round.

k4, k2tog; rep from * to * the entire round.

K 1 round.

k3, k2tog; rep from * to * the entire round.

K 1 round.

k2, k2tog; rep from * to * the entire round.

K 1 round.

k1, k2tog; rep from * to * the entire round.

K 1 round.

K2tog and at the same time cast off all sts.

Finishing:

Seam the hole at the top of the hat. Weave in all ends and block lightly.

SIZES

ONE-SIZE

YARN

Merry Fraya
 100 % Merino wool
 50 g = 100 m

YARDAGE

Scarf:

300 g

Hat:

100 g

GAUGE

In pattern on size 6 [5 mm] needles:

18 sts x 26 rows = 10 cm x 10 cm

SUGGESTED NEEDLE SIZE

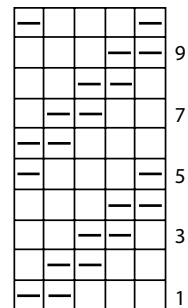
Scarf:

UK size 7 and 6 [4½ and 5 mm] needles

Hat:

UK size 7 and 6 [4½ and 5 mm] circular needles 40 cm or double pointed needles

Please note: The needle sizes given above are only suggestions. The size of the needles you need depends on your personal gauge. If you knit firmly you might need a large needle size, if you knit loosely you might need a smaller needle size.



K on the RS, p on the WS

P on the RS, k on the WS