

#SNOWBALLFIGHTMITTENS

snowball fight mittens



FRAYA[®]



#SNOWBALLFIGHTMITTENS

snowball fight mittens

ABBREVIATIONS:

st[s] = stitch(es)
k = knit
p = purl
patt = pattern
tbl = through the back loop
k2tog = knit 2 sts together
k3tog = knit 3 sts together
p2tog = purl 2 sts together
yo = yarn over

inc = increase[s]
dec = decrease[s]
cont = continue
rep = repeat
eyelet = k2tog, yo, on the next round p the yo
mid dec = when 2 sts remain before the middle
 k2tog, k2togtbl

MITTENS

On UK size 11 [3 mm] double pointed needles cast on 60 sts with colour 1.

K 1 round, p 1 round, k 1 round.

Round 4: *k1, yo, k4, k3tog, k4, yo* rep from * to * a total of 5 times.

Round 5: k, k all the yo tbl.

Repeat round 4 and 5 a total of 4 times.

Change to colour 2.

Rep round 4 and 5 once.

Change to colour 1.

Rep round 4 and 5 twice.

Change to colour 2.

Rep round 4 and 5 once.

Change to colour 1.

Rep round 4 and 5 4 times.

K 1 round and divide the sts evenly on 4 needles.

Work in patt according to chart 1. When the patt has been worked until the 3 grey cells work inc for the thumb according to chart 2 across these 3 sts.

When a total of 6 inc have been worked and there are 13 sts for the thumb work evenly according to chart 2, now place the 13 thumb sts on scrap yarn or a st holder and cast on 3 new sts behind these sts.

Cont working according to chart 1.

Pull the yarn through the last 16 sts, tighten and weave in the end thoroughly.

Thumb: Pick up 11 sts behind the thumb and cont working according to chart 2.

Pull the yarn through the last 12 sts, tighten and weave in the end thoroughly.

Make another mitten but opposite.

SIZES

One-Size

YARN

Sensible Fraya

100% Wool Superwash

50 g = 144 m

or

Steady Fraya

70% Wool + 30% Polyamide

50 g = 150 m

YARDAGE

Colour 1 50 g

Colour 2 50 g

GAUGE

29 sts and 26 rows to 10 x 10 cm in
 patt on UK size 11 [3 mm] needles.

SUGGESTED NEEDLE SIZE

UK size 11 (3 mm) double
 pointed needles

Please note: The needle sizes given above are only suggestions. The size of the needles you need depends on your personal gauge. If you knit firmly you might need a large needle size, if you knit loosely you might need a smaller needle size.

CHART 1

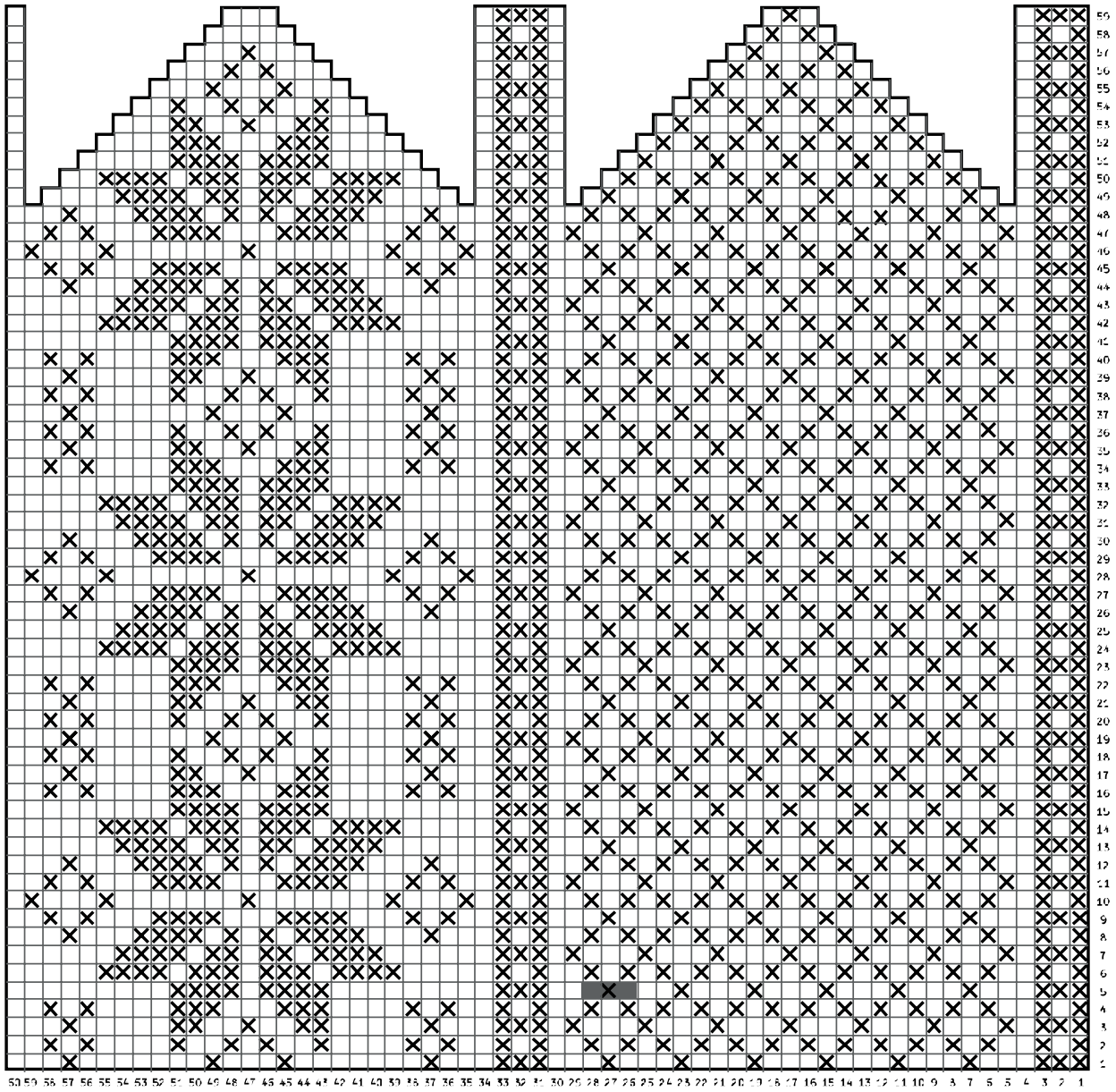


CHART 2

