

#COOKIEJARWRISTWARMERS

cookie jar wrist warmers



FRAYA[®]

♥ KEEP YOUR HANDS WARM ON COLD BIKE RIDES WITH THESE LOVELY FINGERLESS MITTTS KNITTED IN THE SOFTEST ALPACA. THE MITTS ARE WORKED FROM THE WRIST TO THE FINGERS WITH DELICATE TWISTED RIB DETAILS.

#COOKIEJARWRISTWARMERS

cookie jar wrist warmers

ABBREVIATIONS:

- st(s)** = stitch(es)
k = knit
p = purl
RS = right side
WS = wrong side
Tbl = through the back loop [twisted stitch]
M1 = Make 1 increase: Pick up the chain between stitches with the left needle from front to back and knit it through the back loop

Designed by Thora Rytter Jørgensen

The fingerless mitts are worked from the wrist to the fingers.

Left mitt:

Cast on 48 [52] sts loosely on UK size 12½ [2.5 mm] double-pointed needles or a 80 cm circular needle. Join in the round and work 14 [16] rounds in twisted rib [k1 tbl, p1], or desired length.

Work increases for thumb gusset according to the chart:

The first 24 [26] sts are the back of the hand sts, the last 24 [26] are the palm of the hand sts.

Place a marker at each side.

Work first round as follows: Marker, knit 24 [26] sts, marker, knit 24 [26] sts, place new marker, M1. Continue according to chart.

When the chart has been completed, the 15 [17] thumb sts are placed on a stitch holder and the remaining 48 [52] sts are worked in the round.

Work 6 [8] rounds in twisted rib [k1 tbl, p1].

Cast off loosely in rib.

Optionally a stretchy cast off such as the Italian cast off can be used, or larger needles can be used to cast off with.

Right mitt:

Cast on 48 [52] sts loosely on UK size 12½ [2.5 mm] double-pointed needles or a 80 cm circular needle. Join in the round and work 14 [16] rounds in twisted rib [k1 tbl, p1], or desired length.

Work increases for thumb gusset according to the chart:

The first 24 [26] sts are the back of the hand sts, the last 24 [26] are the palm of the hand sts.

Place a marker at each side.

Work first round as follows: Marker, M1, place new marker, knit 24 [26] sts, marker, knit 24 [26] sts. Continue according to chart.

When the chart has been completed, the 15 [17] thumb sts are placed on a stitch holder and the remaining 48 [52] sts are worked in the round.

Work 6 [8] rounds in twisted rib [k1 tbl, p1].

Cast off loosely in rib.

Optionally a stretchy cast off such as the Italian cast off can be used, or larger needles can be used to cast off with.

Thumbs:

Pick up and knit 5 sts along the hand edge. Place the 15 [17] thumb sts back on the needle. Join in the round and work 5 [6] rounds in twisted rib [k1 tbl, p1]. Remember to adjust the rib to it fits with the thumb sts.

Cast off loosely in rib.

Optionally a stretchy cast off such as the Italian cast off can be used, or larger needles can be used to cast off with.

SIZES

XS/S (M/L)

YARN

Woolly Fraya
 100% Alpaca
 50 g = 155 m

YARDAGE

50 [50] g

GAUGE

In stockinette stitch on UK size 21½ [2.5 mm] needles
 28 sts x 38 rows = 10 cm x 10 cm

SUGGESTED NEEDLE SIZE

UK size 12½ [2.5 mm] double-pointed needles or a 80 cm circular needle if the Magic Loop technique is used

Please note: The needle sizes given above are only suggestions. The size of the needles you need depends on your personal gauge. If you knit firmly you might need a large needle size, if you knit loosely you might need a smaller needle size.

NOTIONS

Stitch holder, stitch markers

Chart left, XS/S

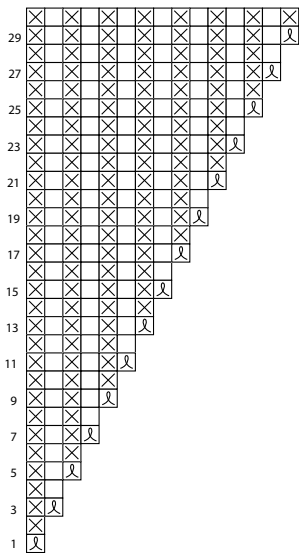
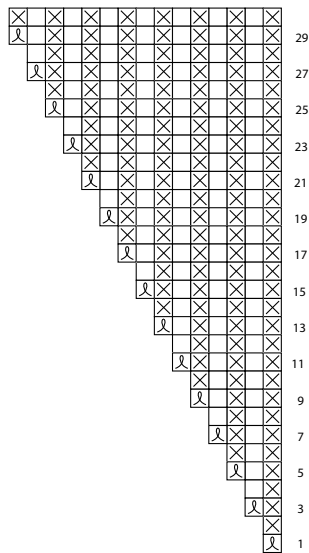


Chart right, XS/S



□ through the back loop [twisted stitch]

⊗ purl

⊘ Make 1 increase: Pick up the chain between stitches with the left needle from front to back and knit it through the back loop

Chart left, M/L

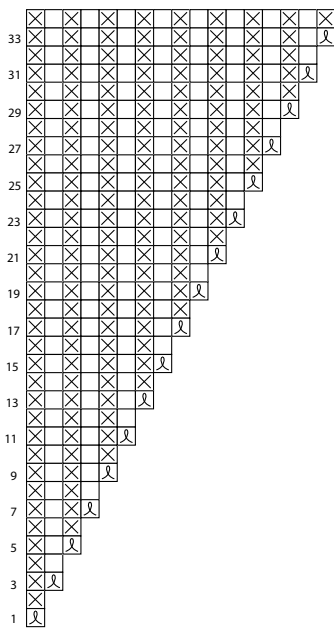


Chart right, M/L

