

#CHILIDOGSWEATER

# chili dog sweater



♥ KNIT THE MOST ADORABLE LITTLE SWEATER FOR YOUR BEST FOURLEGGED FRIEND, TO KEEP THEM WARM DURING YOUR WALKS ON COOLER DAYS. THE PATTERN IS STRAIGHT FORWARD, JUST OFFLOWS THE CHART AND YOU WILL BE ON YOUR WAY.

#CHILIDOGSWEATER

# chili dog sweater

## ABBREVIATIONS:

**st[s]** = stitch[es]  
**k** = knit  
**p** = purl  
**RS** = right side  
**WS** = wrong side

Designed by Malan Lofti

## Directions for knitting:

First the back is worked back and forth, then stitches are cast on for the front and the body is worked in the round from here. The sleeves are also worked in the round and is joined with the body for the yoke. Measure the length and body of your dog before beginning, and adjust the length and width of the sweater if required.

## Back:

Cast on 24 [30] 34 sts with colour A on UK size 6 [5 mm] double-pointed needles or a 80 cm circular needle.

Work 5 rows back and forth in rib [k1, p1]. End on a WS row.

Now work as follows:

Row 1 [RS]: K1, p1, k1, p1, knit to the last 4 sts, p1, k1, p1, k1.

Row 2 [WS]: P1, k1, p1, k1, purl to the last 4 sts, k1, p1, k1, p1.

Repeat Row 1 and 2 until the work measures 8 [10] 12 cm from the cast on edge, End on a RS row.

## Body:

Cast on 24 [30] 34 new sts in extension of the sts on the needle. Join in the round and knit across the 24 [30] 34 sts for the back, place a marker for the beginning of the round. Work in rib [k1, p1] across the new sts for the first 6 rounds.

Continue in stockinette stitch across all sts until the work measures 14 [18] 22 cm.

Break the yarn and let the sts rest.

## Front leg sleeves:

Cast on 16 [18] 18 sts with colour A on UK size 6 [5 mm] double-pointed needles or a 80 cm circular needle. Join in the round and place a marker for the beginning of the round. work 6 rounds in rib [k1, p1]. Increase 6 sts evenly across the next round and continue in stockinette stitch until the sleeve measures 5 [6] 7 cm. Place 5 [6] 7 sts around the marker on a stitch holder. The sts form the armhole [for front leg].

Work a second sleeve the same way as the first.

## Yoke:

Join the sleeves and the body on on UK size 6 [5 mm] double-pointed needles or a 80 cm circular needle with colour A as follows: Place 5 [6] 6 sts from the front on a stitch holder, knit across the 17 [18] 17 sts for the first sleeve, knit 14 [18] 22 front sts and place the last 5 [6] 6 front sts on a stitch holder, knit across the 17 [18] 17 sts for the second sleeve, knit across the 24 [30] 34 back sts. There are now a total of 72 [84] 90 sts on the needle.

work the charted pattern while working decreases as shown in the chart. There are a total of 36 [42] 45 sts left after the ptttern has been completed. work 1 round in stockinette stitch with colour while decreasing 0 [0] 1 stitch evenly across the round. Work 6 rounds in rib [k1, p1]. Bind off all sts purl-wise, loosely.

## Finishing:

Sew the sts under the sleeves together with Kitchener stitch. Weave in all ends and gently rinse the sweater according to the directions of the yarn label.

## SIZES

[S] M [L]

## MEASUREMENTS

Half chest circumference:

27 [33] 36 cm

Back length:

25 [30] 35 cm

## YARN

Warm Fraya

100% Wool

50 g = 100 m

## YARDAGE

Colour A: 50 g

Colour B: 10 g

Colour C: 10 g

## GAUGE

In stockinette stitch on a UK size 6 [5 mm] needle

18 sts x 22 rows = 10 x 10 cm

## SUGGESTED NEEDLE SIZE

UK size 6 [5 mm] double-pointed needles or a 80 cm circular needle if the Magic Loop technique is used

Please note: The needle sizes given above are only suggestions. The size of the needles you need depends on your personal gauge. If you knit firmly you might need a large needle size, if you knit loosely you might need a smaller needle size.

## NOTIONS

Stitch holder, stitch markers

## VARIATION

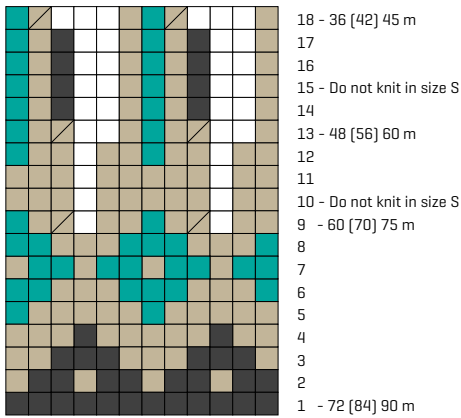
### Yarn option:

Warm Hearted Fraya

100% Organic Wool

50 g = 100 m

CHART



- Colour A
- Colour B
- Colour C
- k2tog
- no stitch

