

#GONEFISHINGSWEATER

# gone fishing sweater



# FRAYA<sup>®</sup>



#GONEFISHINGSWEATER

## gone fishing sweater

## ABBREVIATIONS:

st(s)	= stitch(es)	mrk	= marker
tbl	= through the back loop	RS	= right side
k	= knit	st st	= stocking stitch
beg	= beginning	WS	= wrong side
p	= purl	yo	= yarn over
rep	= repeat	inc	= increase(s)
patt	= pattern	tog	= together
cont	= continue	dec	= decrease(s)

The sweater is worked bottom up. The body and sleeves are worked first and then all the parts are placed on the same needle and the yoke is worked.

## BODY:

On the size 13-12 (2½ mm), 60 cm circular needles cast on 144 (156) 168 (180) 192 sts with co 1. Place a mrk at each side with 72 (78) 84 (90) 96 sts for each of the two halves. Work 6 rounds of rib, k1, p1. Change to size 11 (3 mm), 60 cm circular needles.

Work in patt according to the chart. Work even until the work measures 17 (18) 20 (24) 27 cm. Then cast off 6 sts on each side for the armhole, i.e. 3 sts on each side of the two markers. Let the work rest.

## SLEEVE:

On the size 13-12 (2½ mm) double pointed needles cast on 36 (42) 42 (48) 54 sts. Place a mrk at the beg of the round. Work 6 rounds of rib, k1, p1. Change to size 11 (3 mm) double pointed needles.

Work in patt according to the chart and at the same time inc 1 st on each side of the marker on every 5th (8th) 6th (7th) 9th round until you have a total of 54 (54) 60 (66) 66 sts. The new sts are included in the patt. Cont even in patt until work measures 17 (18) 20 (24) 27 cm, the same as the body. Cast off 3 sts on either side of the mrk and let the work rest.

Knit another sleeve in the same way.

## YOKE:

Place all the parts on the size 11 (3 mm), 60 cm circular needle and place a mrk between each part. Front/back: 66 (72) 78 (84) 90 sts, sleeves: 48 (48) 54 (60) 60 sts. Cont working in patt and work dec by dec 1 st before and 1 st after the mrk. The st before and after the mrk is worked in co 1. Work as follows:

**Round 1:** Work in patt.

**Round 2:** Work in patt and work dec.

**Round 3:** Work in patt.

**Round 4:** Work in patt and work dec.

**Round 5:** Work in patt.

**Round 6:** Work in patt.

**Round 7:** Work in patt and work dec.

In this way you dec 24 sts on every 7th round. Rep this 5 (5) 6 (7) 7 times until 84 (96) 96 (96) 108 sts rem. Change to shorter circular needles as needed.

Sizes 86 (92) 104) 110: Work 3 extra rounds. Change to the size 13-12 (2½ mm), 40 cm circular needles and work 6 rounds of rib, k1, p1. Cast off all sts.

**Size 122:** Work 2 extra rounds and dec on the 2nd round. Change to the size 2,5 mm, 40 cm circular needles and work 6 rounds of rib, k1, p1. Cast off all 100 sts.

## FINISHING:

Weave in all ends and block lightly. Seam the sleeves.

## SIZES

86 [92] 104 [110] 122

## MEASUREMENTS

½ Chest:

28 [29] 32 [34] 37 cm

Length:

32 [34] 36 [41] 44 cm

## YARN

Reliable Fraya

70% Wool + 30% Polyamide

50 g = 150 m

or

Steady Fraya

70% Wool + 30% Polyamide

50 g = 150 m

## YARDAGE

Colour 1: 100 [150] 150 [150] 200 g

Colour 2: 100 [100] 100 [100] 200 g

## GAUGE

25 sts and 30 rows to 10 x 10 cm in st st  
on size 11 (3,0 mm) needles

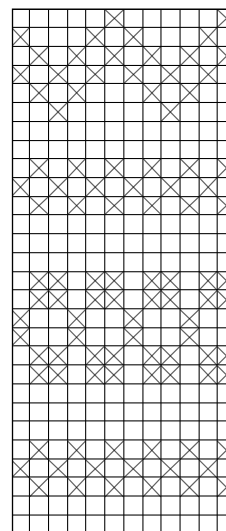
## SUGGESTED NEEDLE SIZE

Size 13-12 and 11 (2½ and 3 mm)  
circular needles, 40 cm and 60 cm,

Please note: The needle sizes given above are only suggestions. The size of the needles you need depends on your personal gauge. If you knit firmly you might need a large needle size, if you knit loosely you might need a smaller needle size.

## NOTIONS

Markers


 Colour 1

 Colour 2