

#SOFTCUDDLESBABYSWEATER

# soft cuddles baby sweater



# FRAYA<sup>®</sup>





#SOFTCUDDLESBABYSWEATER

# soft cuddles baby sweater

## ABBREVIATIONS:

**st(s)** = stitch(es)  
**k** = knit  
**p** = purl  
**tbl** = through the back loop  
**tog** = together  
**yo** = yarn over  
**RS** = right side  
**WS** = wrong side  
**beg** = beginning  
**rep** = repeat  
**rem** = remain(ing)  
**st st** = stocking st  
**mrk** = marker  
**patt** = pattern  
**cont** = continue  
**dec** = decrease(s)

**inc front** = m1r - Pick up the chain between stitches with the left needle from back to front and knit it.

**inc bac** = m1l - Pick up the chain between stitches with the left needle from front to back and knit it through the back loop.

**6behind** = place 3 sts on a cable needle behind the work, k3, k the 3 sts from the cable needle

**6front** = place 3 sts on a cable needle in front of the work, k3, k the 3 sts from the cable needle

**knot** = p3tog, leave the st on the needle, yo, p the same 3 sts tog.

**button hole** = k2tog, yo

The sweater is worked top down, back and forth on circular needles. This makes it easier to adjust the length of the body and sleeves.

## PATTERN:

Cast on 72 [72] 76 [76] 76 sts on the UK size 12-10 [3 mm], 60 cm circular needle. Work 3 rows of st st starting with a WS row.

Now work an eyelet row as follows:

**Row 4:** K2, \*yo, k2tog\*, rep from \* to \* until the last 2 sts, k2.

**Row 5:** P.

**Row 6:** K and place a marker after 9 [9] 9 [9] 9 sts [sleeve], 25 [25] 27 [27] 27 sts [back] and 9 [9] 9 [9] 9 sts [sleeve]; there are 29 [29] 31 [31] 31 sts left for the front.

**Row 7:** P.

**Row 8:** Slip 1 st, k1, inc front, k[5] 5 [5] 5, inc back, k2, mrk, p1, k6, p1, k1, inc front, k7 [7] 9 [9] 9, inc back, k1, p1, k6, p1, mrk, k2, inc front, k5 [5] 5 [5] 5, inc back, k2, mrk, p1, k6, p1, k1, inc front, k7 [7] 9 [9] 9 r, inch back, k1, p1, k6, p1, k1, p1, k2.

**Row 9:** Slip 2 sts, work in pattern and p all the new sts, k the last st.

On the next row work inc, cables and knots as follows:

**Row 10:** slip 1 st, k1, inc front, k2 [2] 2 [2] 2, 1 knot, k2 [2] 2 [2] 2, inc back, k2, mrk, p1, 6behind, p1, k1, inc front, k3 [3] 4 [4] 4, 1 knot, k3 [3] 4 [4] 4, inc back, k1, p1, 6front, p1, mrk, k2, inc front, k2 [2] 2 [2] 2, 1 knot, k2 [2] 2 [2] 2, inc back k2, mrk, p1, 6behind, p1, k1, inc front, k3 [3] 4 [4] 4, 1 knot, k3 [3] 4 [4] 4, inc back, k1, p1, 6front, p1, k1, p1, k2.

**Row 11:** Slip 2 sts, work in pattern and p all the new sts, k the last st.

**Row 12:** Work in patt and work inc as before.

**Row 13:** Slip 2 sts, work in patt and p all the new sts, k the last st.

## SIZES

56 [62] 68 [74] 80

## MEASUREMENTS

Chest 1/2:

22 [24] 25,5 [27,5] 28,5 cm

Length:

24 [25] 28 [30] 32 cm

## YARN

Mindful Fraya

100 % Wool

50 g = 350 m

## YARDAGE

50 [50] 100 [100] 100 g

## GAUGE

l glatstrik på pinde nr. 3:

24 m x 36 p = 10 cm x 10 cm

## SUGGESTED NEEDLE SIZE

UK size 13-12 and 12-10 [2.5 and 3 mm] needles and double pointed, cable needle

Please note: The needle sizes given above are only suggestions. The size of the needles you need depends on your personal gauge. If you knit firmly you might need a large needle size, if you knit loosely you might need a smaller needle size.

## NOTIONS

Markers, stitch holders, 6 buttons

**Row 14:** Work in patt and work inc as before.

**Row 15:** Slip 2 sts, work in patt and p all the new sts, k the last st.

Rep the last 6 rows so that inc are worked on every second row and cables and knots on every sixth row. The knots are worked with 5 sts in between as shown in the chart. Adjust the patt as you go.

At the same time work buttonholes in the rib along the front with 4 cm in between.

Work as described until you have 43 [47] 51 [55] 59 sts for the sleeves and 59 [63] 69 [73] 77 sts for the back and 63 [67] 73 [77] 81 sts for the front.

Now finish the sleeves and front-back separately.

Place the sts for the left sleeve on a st holder, cast on 4 sts and work across the back, place the sts of the right sleeve on a st holder, cast on 4 sts between the front and back and work across the front.

Next: Slip 2 sts, work in patt and p all the new sts, k the last st.

Cont in the pattern of cables, knots and buttonholes but without inc until the work measures 23 [24] 27 [31] cm from the neck edge,

Change to the UK size 13-12 [2.5 mm], needles and work 4 rows of rib, k1, p1, and cast off all sts.

**SLEEVES:**

Place the sleeve sts on the UK size 12-10 [3 mm] double pointed needles. Start by casting on 4 new sts between the two sides and place a mrk in the middle [armhole] and cont in st st and knot patt on every 6th round. At the same time dec on each side on every 4th [4th] 6th [6th] round until 31 [31] 33 [35] 37 sts rem. Cont until the work measures 13 [14] 16 [20] 23 cm from the armhole. Change to the UK size 13-12 [2.5 mm] double pointed needles and work 4 rounds of rib, k1, p1, and cast off all sts.

Knit the other sleeve in the same way.

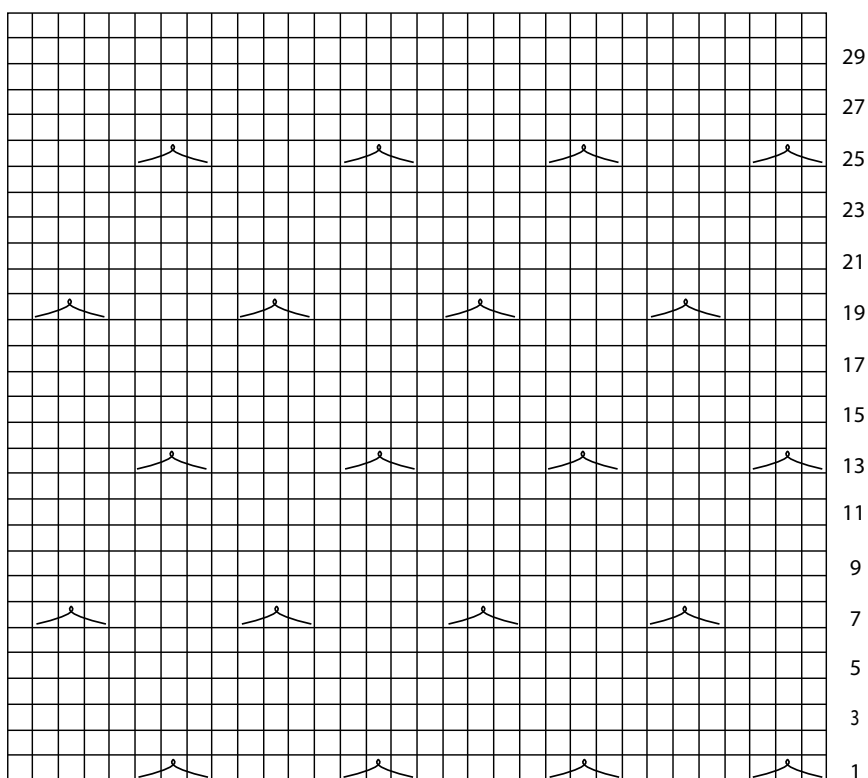
**FINISHING:**

Pick up sts along the raglan on the left sleeve, cont picking up sts along the left side of the back [approx. 18 sts per 10 cm]. Work 5 rows of st st with the UK size 13-12 [2.5 mm] needle and cast off all sts loosely.


Weave in all ends and press lightly.

Sew on buttons opposite the buttonholes.

**Diagram/Diagramm**



Knit on right side, purl on wrong side

 Knot: p3tog, leave the st on the needle, yo, p the same 3 sts tog

