

#SUNSOUTDRESS

sun's out dress





#SUNSOUTDRESS

sun's out dress

ABBREVIATIONS:

st[s] = stitch[es]
cs = chain stitch
sls = slip stitch
db = double crochet
tr = treble crochet
picot = 3 cs, 1 sls in 1st cs

shell = 3 tr, 1 picot, 3 tr in same cs-space
increase = 2 tr in same st. You will get the neatest result by placing the increases in the middle of a stripe of tr.

PATTERN FOR SKIRT:

The pattern is divisible by 12.

Row 1: 3 cs [= 1 tr], 1 tr, *2 cs, skip the first cs-space, 1 shell in next cs-space, 2 cs, skip next cs-space, 3 tr*, repeat from * to * to end of row, ending with 2 tr instead of 3 [right side of work].

Row 2: 3 cs [= 1 tr], 1 tr, *2 cs, 1 db in the first tr of the shell, 4 cs, 1 db in the last tr of the shell, 2 cs, skip cs-space, 3 tr*, repeat from * to * to end of row, ending with 2 tr instead of 3.

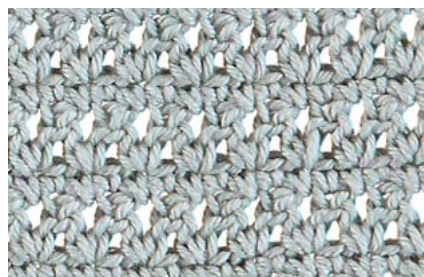
PATTERN FOR YOKE:

The pattern is divisible by 2.

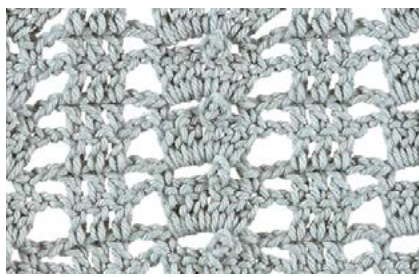
Row 1: 1 cs, db to end of row [right side of work].

Row 2: 3 cs, yarn over, pull up a loop in 1st db – there are now 3 loops on the hook – yarn over and pull through 2 loops, yarn over, skip 1 db, pull up a loop in next db – there are now 4 loops on the hook – yarn over, pull through 2 loops, yarn over, pull through the last 3 loops, *1 cs, yarn over, pull up a loop in the same db – there are now 3 loops on the hook – yarn over and pull through 2 loops, yarn over, skip 1 db, pull up a loop in next db – there are now 4 loops on the hook – yarn over, pull through 2 loops, yarn over, pull through the last 3 loops*, repeat from * to * to end of row, ending with 1 tr in the same db.

Pattern for yoke



Pattern for skirt



SIZES

86 [92] 104 [110] 122 [128]

MEASUREMENTS

Length approx.

48 [53] 57 [61] 67 [74] cm

½ chest approx.

27 [28] 29 [30] 31 [33] cm

YARN

Colourful Fraya

100% Cotton

50 g = 170 m

YARDAGE

A: 150 [200] 200 [250] 250 [250] g

B: 50 [100] 100 [100] 100 [100] g

CROCHET GAUGE

In pattern:

26 sts = 10 cm using size 11 hook.

SUGGESTED NEEDLE SIZE

UK size 11 [3 mm] crochet hook

Please note: It is important to obtain gauge. The work should have a close texture. Try with a smaller or larger needle if necessary.

NOTIONS

B: 35 [40] 40 [45] 50 [55] cm fabric

MODEL A:

Begin with the yoke, and then crochet the skirt at the bottom of the yoke.

Back:

Crochet 69 [71] 75 [77] 79 [83] cs, turn.

Crochet 9 rows in pattern – the last row is a row of db.

Now crochet the armholes:

Row 10: 1 cs, 4 sls, beginning in 3rd st from the hook, crochet pattern [row 2 of pattern], begin in the same db and end row when 4 db remain.

Row 11: 1 cs, db to end of row.

Row 12: 1 cs, 2 sls, beginning in 3rd st from the hook, crochet pattern [row 2 of pattern], begin in the same db and end row when 2 db remain.

Row 13: 1 cs, db to end of row.

Repeat row 12 and 13 a total of 3 times – there are now 49 [51] 55 [57] 59 [63] db.

Work straight until the back measures 12 [12] 13 [14] 14 [15] cm, ending with a row of db. Now work the straps.

Crochet the first 11 sts in pattern, work straight until the strap measures 4 [5] 5 [5] 5 [5] cm, break the yarn.

Crochet the strap on the other side in the same way by beginning in 11th db from the armhole.

Front:

Work as for the back until the front measures 8 [8] 9 [10] 10 [11] cm, ending with a row of db. Now work the straps.

Left strap:

Crochet the first 13 sts in pattern, turn.

Crochet a row of db.

Crochet the first 11 sts in pattern, work straight until the work measures the same as the back, break the yarn.

Right strap:

Begin in 13th db from the armhole, work in pattern [row 2 of pattern] to end of row.

Crochet 1 cs to turn, and work db to end of row.

Crochet 1 cs to turn, 2 sls, beginning in 3rd st from the hook, crochet pattern [row 2 of pattern] to end of row.

Work straight until the work measures the same as the left strap, break the yarn.

Skirt:

Crochet 85 [87] 97 [97] 101 [103] db at the bottom of the back.

Row 1: 3 cs [= 1 tr], 1 [2] 1 [1] 2 [3] tr, *2 cs, skip 2 db, 1 db, 4 cs, skip 3 db, 1 db, 2 cs, skip 2 db, 3 tr*, repeat from * to * to end of row, but end with 2 [3] 2 [2] 3 [4] tr.

Row 2: 3 cs [= 1 tr], 1 [2] 1 [1] 2 [3] tr, *2 cs, skip cs-space, 1 shell in next cs-space, 2 cs, skip cs-space, 3 tr*, repeat from * to * to end of row, but end with 2 [3] 2 [2] 3 [4] tr.

Row 3: 3 cs [= 1 tr], 1 [2] 1 [1] 2 [3] tr, *2 cs, 1 db in the first tr of the shell, 4 cs, 1 db in the last tr of the shell, 2 cs, skip cs-space, 3 tr*, repeat from * to * to end of row, but end with 2 [3] 2 [2] 3 [4] tr.

Repeat row 2 and 3.

Increase after every 7th [7th] 8th [8th] 7th [7th] shell – the number of tr between the shells increases by 1 for every increase.

Crochet until the skirt measures approx. 31 [35] 38 [41] 47 [53] cm, ending with a row without shells [row 3].

Now crochet the bottom edge:

3 cs [= 1 tr], 1 [2] 1 [1] 2 [3] tr, *2 tr in cs-space, 1 tr, 1 shell in next sc-space, 1 tr, 2 tr in next cs-space, 1 tr in each of the next tr from the previous row*, repeat from * to * to end of row, ending with 2 [3] 2 [2] 3 [4] tr, break the yarn.

Crochet the skirt on the front in the same way.

Finishing:

Sew shoulder seams and side seams from the right side using mattress sts, sew the side seams in the outer tr.

Weave in ends.

Edge around neckline and armholes:

Crochet a round of db, then a round of crab sts.

Weave in ends.

If desired, the skirt can be lined with jersey.

Measure the bottom of the skirt, add 2 cm, and measure the length of the skirt.

Cut 2 pieces of jersey: bottom width + 2 cm x length.

Overlock the pieces.

Sew side seams on the 2 pieces.

Sew a tacking thread at the top, and gather to fit the yoke. Sew the lining onto the yoke.

Hem the lining with a 2 cm seam.



MODEL B: with sewn skirt
Crochet front and back as for model A.

Finishing:

Sew shoulder seams and side seams from the right side using mattress sts, sew the side seams in the outer tr.

Weave in ends.

Edge around neckline and armholes:

Crochet a round of db, then a round of crab sts.

Weave in ends.

Edge at the bottom of skirt:

Crochet a row of cs, approx. 92 [96] 100 [104] 108 [112] cm, making sure the number of cs is divisible by 7 + 1 [approx. 28 cs per 10 cm, the pattern consists of 7 sts].

Row 1: Crochet 3 cs to turn, and work tr to end of row.

Row 2: Crochet 5 cs to turn, and work 1 db in 3rd tr from hook, *4 cs, skip 3 tr, 1 db, 2 cs, skip 2 tr, 1 db*, repeat from * to * to end of row, ending with 4 cs, skip 3 tr, 1 db.

Row 3: Crochet 3 cs to turn [= 1 tr], (2 tr, 1 picot, 3 tr) in cs-space, *1 cs, (3 tr, 1 picot, 3 tr) in next cs-space [the one consisting of 4 cs]*, repeat from * to * to end of row, ending with 1 db in cs-space. Break the yarn and weave in the ends.

Sizes	86 [92] 104 [110] 122 [128]
Width	94 [98] 102 [106] 110 [114] cm
Length	32 [36] 39 [42] 49 [54] cm

Cut a piece of fabric to measurements given in the table, and overlock all edges.

- Sew it together right side against right side with a 1 cm seam.
- Sew a tacking thread at the top, gather to fit the yoke, and sew it onto the yoke.
- Sew on the edge at the bottom of the skirt.

