

#LITTLEOSWEATER

# Little O sweater



♥ THE LOVELIEST SWEATER IN ORGANIC COTTON FOR YOUR FAVOURITE BOY! THE DESIGN IS WORKED FROM THE TOP DOWN – THE FIRST PART OF THE YOKE IS WORKED BACK AND FORTH TO CREATE THE BUTTON PLACKET THAT MAKES THE SWEATER EASY TO PUT ON FOR THE LITTLE ONES. THE REST OF THE SWEATER IS WORKED IN THE ROUND IN THE SWEETEST LITTLE TEXTURE PATTERN, WHICH IS SIMPLE TO KNIT ONCE YOU GET THE HANG OF IT. A TRULY LOVELY PROJECT FOR THE INTERMEDIATE KNITTER

#LITTLESWEATER

# Little O sweater

## ABBREVIATIONS:

**st(s)** = stitch(es)  
**k** = knit  
**p** = purl  
**RS** = right side  
**WS** = wrong side  
**tbl** = through the back loop(s)  
**tog** = together

**M1R** = Make 1 Right increase: Pick up the chain between stitches with the left needle from back to front and knit it

**M1L** = Make 1 Left increase: Pick up the chain between stitches with the left needle from front to back and knit it through the back loop

Designed by Bente Dalsgaard Andersen

The sweater is worked from the top down. The first part of the yoke is worked back and forth to create plackets, so the sweater is easy to pull over the head of the little ones.

## PATTERN

### YOKE:

Cast on 79 [79] 79 [79] 87 [87] 87 sts on a UK size 11 [3 mm] needle.

**Row 1 [WS]:** K3, \*p1, k1\*, repeat from \* to \* to the last 4 sts, k4.

**Row 2:** K4, \*p1, k1\*, repeat from \* to \* to the last 1 sts, k1.

**Row 3:** K3, \*p1, k1\*, repeat from \* to \* to the last 4 sts, k4.

**Row 4:** K4, \*p1, k1\*, repeat from \* to \* to the last 4 sts, k2tog tbl, yarn over, k2.

**Row 5:** K3, knit the yarn over to create a buttonhole, \*p1, k1\*, repeat from \* to \* to the last 4 sts, k4.

**Row 6:** K4, \*p1, k1\*, repeat from \* to \* to the last 1 sts, k1.

**Row 7:** K3, purl 71 [71] 71 [71] 79 [79] 79 sts, k5.

**Row 8:** K4, purl 73 [73] 73 [73] 81 [81] 81 sts, k2.

**Row 9:** K3, purl 71 [71] 71 [71] 79 [79] 79 sts, k5.

**Row 10:** K4, p1, k1, M1R, work the next 9 [9] 9 [9] 11 [11] 11 sts in the charted pattern, M1L, k1, p1, k1, M1R, work the next 21 [21] 21 [21] 23 [23] 23 sts in the charted pattern, M1L, k1, p1, k1, M1R, work the next 9 [9] 9 [9] 11 [11] 11 sts in the charted pattern, M1L, k1, p1, k1, M1R, work the next 21 [21] 21 [21] 23 [23] 23 sts in the charted pattern, M1L, k1, p1, k2.

**Row 11:** K3, p1, work the next 23 [23] 23 [23] 25 [25] 25 sts in the charted pattern, p1, k1, p1, work the next 11 [11] 11 [11] 13 [13] 13 sts in the charted pattern, p1, k1, p1, work the next 23 [23] 23 [23] 25 [25] 25 sts in the charted pattern, p1, k1, p1, work the next 11 [11] 11 [11] 13 [13] 13 sts in the charted pattern, p1, k5.

**Row 12:** K4, p1, k1, M1R, work the next 11 [11] 11 [11] 13 [13] 13 sts in the charted pattern, M1L, k1, p1, k1, M1R, work the next 23 [23] 23 [23] 25 [25] 25 sts in the charted pattern, M1L, k1, p1, k1, M1R, work the next 11 [11] 11 [11] 13 [13] 13 sts in the charted pattern, M1L, k1, p1, k1, M1R, work the next 23 [23] 23 [23] 25 [25] 25 sts in the charted pattern, M1L, k1, p1, k2.

**Row 13:** K3, p1, work the next 25 [25] 25 [25] 27 [27] 27 sts in the charted pattern, p1, k1, p1, work the next 13 [13] 13 [13] 15 [15] 15 sts in the charted pattern, p1, k1, p1, work the next 25 [25] 25 [25] 27 [27] 27 sts in the charted pattern, p1, k1, p1, work the next 13 [13] 13 [13] 15 [15] 15 sts in the charted pattern, p1, k5.

**Row 14:** K4, p1, k1, M1R, work the next 13 [13] 13 [13] 15 [15] 15 sts in the charted pattern, M1L, k1, p1, k1, M1R, work the next 25 [25] 25 [25] 27 [27] 27 sts in the charted pattern, M1L, k1, p1, k1, M1R, work the next 13 [13] 13 [13] 15 [15] 15 sts in the charted pattern, M1L, k1, p1, k1, M1R, work the next 25 [25] 25 [25] 27 [27] 27 sts in the charted pattern, M1L, k1, p1, k2.

**Row 15:** K3, p1, work the next 27 [27] 27 [27] 29 [29] 29 sts in the charted pattern, p1, k1, p1, work the next 15 [15] 15 [15] 17 [17] 17 sts in the charted pattern, p1, k1, p1, work the next 27 [27] 27 [27] 29 [29] 29 sts in the charted pattern, p1, k1, p1, work the next 15 [15] 15 [15] 17 [17] 17 sts in the charted pattern, p1, k5.

**Row 16:** K4, p1, k1, M1R, work the next 15 [15] 15 [15] 17 [17] 17 sts in the charted pattern, M1L, k1, p1, k1, M1R, work the next 27 [27] 27 [27] 29 [29] 29 sts in the charted pattern, M1L, k1, p1, k1, M1R, work the next 15 [15] 15 [15] 17 [17] 17 sts in the charted pattern, M1L, k1, p1, k1, M1R, work the next 27 [27] 27 [27] 29 [29] 29 sts in the charted pattern, M1L, k1, p1, k2.

**Row 17:** K3, p1, work the next 29 [29] 29 [29] 31 [31] 31 sts in the charted pattern, p1, k1, p1, work the next 17 [17] 17 [17] 19 [19] 19 sts in the charted pattern, p1, k1, p1, work the next 29 [29] 29 [29] 31 [31] 31 sts in the charted pattern, p1, k1, p1, work the next 17 [17] 17 [17] 19 [19] 19 sts in the charted pattern, p1, k5.

## SIZES

62 [68] 74 [80] 86 [92] 98

## MEASUREMENTS

Length approx.  
 25 [27] 30 [32] 34 [37] 40 cm.  
 Half chest circumference approx.  
 27 [27] 29 [29] 30 [30] 31 cm.

## YARN

Soft Fraya  
 100% Organic Cotton  
 50 g = 180 m

## YARDAGE

150 [150] 150 [150] 200 [200] 200 g

## GAUGE

29 sts x 42 rows rows on a UK size  
 11 [3 mm] needle in texture pattern  
 = 10 x 10 cm

## SUGGESTED NEEDLE SIZE

UK size 11 [3 mm] circular needle,  
 40 and 60 cm  
 UK size 11 [3 mm] double-pointed  
 needles.

Please note: The needle sizes given above are only suggestions. The size of the needles you need depends on your personal gauge. If you knit firmly you might need a large needle size, if you knit loosely you might need a smaller needle size.

## NOTIONS

Stitch markers, stitch holders for the sleeve stitches, 3 buttons

All the rows of the chart have now been worked once. Continue working the charted pattern and increases as established.

Work a second buttonhole on row 18 and 19 the same as on Row 4 and 5.

Work a third buttonhole on row 32 and 33.

Bind off for the plackets when a total of 17 increase rows have been worked and there are a total of 215 [215] 215 [215] 223 [223] 223 sts on the needle. The rest of the sweater is worked in the round.

**Row 44:** Cast off 4 sts for the button placket [there is 1 stitch on the right needle after the cast off], k1, M1R, work the next 43 [43] 43 [43] 45 [45] 45 sts in the charted pattern, M1L, k1, p1, k1, M1R, work the next 55 [55] 55 [55] 57 [57] 57 sts in the charted pattern, M1L, k1, p1, k1, M1R, work the next 43 [43] 43 [43] 45 [45] 45 sts in the charted pattern, M1L, k1, p1, k1, M1R, work the next 55 [55] 55 [55] 57 [57] 57 sts in the charted pattern, M1L, k1, p1, k2.

**Row 45:** Cast off 3 sts for the buttonhole placket [there is 1 stitch on the right needle after the cast off], work the next 57 [57] 57 [57] 59 [59] 59 sts in the charted pattern, p1, k1, p1, work the next 45 [45] 45 [45] 47 [47] 47 sts in the charted pattern, p1, k1, p1, work the next 57 [57] 57 [57] 59 [59] 59 sts in the charted pattern, p1, k1, p1, work the next 45 [45] 45 [45] 47 [47] 47 sts in the charted pattern, p1, k1.

Join the work in the round and place a marker for the beginning of the round.

**Round 46:** P1, k1, M1R, work the next 57 [57] 57 [57] 59 [59] 59 sts in the charted pattern, M1L, k1, p1, k1, M1R, work the next 45 [45] 45 [45] 47 [47] 47 sts in the charted pattern, M1L, k1, p1, k1, M1R, work the next 57 [57] 57 [57] 59 [59] 59 sts in the charted pattern, M1L, k1, p1, k1, M1R, work the next 45 [45] 45 [45] 47 [47] 47 sts in the charted pattern, M1L, k1.

**Round 47:** P1, k1, work the next 59 [59] 59 [59] 61 [61] 61 sts in the charted pattern, k1, p1, k1, work the next 47 [47] 47 [47] 49 [49] 49 sts in the charted pattern, k1, p1, k1, work the next 59 [59] 59 [59] 61 [61] 61 sts in the charted pattern, k1, p1, k1, , work the next 47 [47] 47 [47] 49 [49] 49 sts in the charted pattern, k1.

Now work increases on every other round as established until a total of 25 [25] 27 [27] 28 [28] 30 increase rows/rounds have been worked and there are a total of 272 [272] 288 [288] 304 [304] 320 sts on the needle.

Now divide the sts for sleeves and body as follows: Place the next 61 [61] 65 [65] 69 [69] 73 sts on a stitch holder [left sleeve], cast on 5 new sts in extension of the sts on the needle, work 75 [75] 79 [79] 83 [83] 87 sts in pattern [back], place the next 61 [61] 65 [65] 69 [69] 73 sts on a stitch holder [right sleeve], cast on 5 new sts in extension of the sts on the needle, work 75 [75] 79 [79] 83 [83] 87 sts in pattern [front], work 3 sts and place a marker for the beginning of the round.

#### BODY:

Work straight in the charted pattern across the 160 [160] 168 [168] 176 [176] 184 sts for the body until the body measures 7 [9] 10 [12] 14 [17] 19 cm from where the sts were divided for body and sleeves.

Knit the next round, while decreasing 10 [10] 10 [10] 12 [12] 12 sts evenly across the round by working k2tog decreases.

Purl 1 round.

Knit 1 round.

Work 10 [10] 10 [10] 12 [12] 12 rounds in k1, p1 rib. Cast off loosely, optionally using the Italian cast-off technique.

#### SLEEVES:

Pick up and knit 5 sts in the sts cast on at the underarm on the body, work across the 61 [61] 65 [65] 69 [69] 73 sleeve sts in the charted pattern. Work k1, k2tog and place a marker for the beginning of the round [in the middle of the 5 new sts].

There are a total of 65 [65] 69 [69] 73 [73] 77 sts on the needle.

Work 6 rounds in pattern.

Decrease round: K2tog, work in pattern to the last 2 sts of the round, k2tog tbl.

Continue in pattern while working a decrease round every 6th round until the sleeve measures 7 [9] 10 [12] 14 [17] 19 cm from where sts were picked up at the underarm.

Knit the next round, while decreasing to 32 [32] 34 [34] 36 [36] 38 sts.

Purl 1 round.

Knit 1 round.

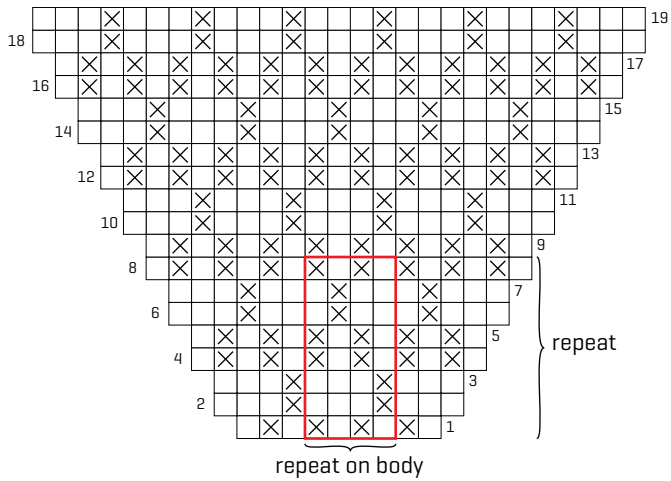
Work 10 [10] 10 [10] 12 [12] 12 rounds in k1, p1 rib. Cast off loosely, optionally using the Italian cast-off technique.



**FINISHING:**

Weave in all ends. Sew down the button placket [under] and buttonhole placket [over].  
Sew in the buttons.

Chart  
Size 62 [68] 74 [80]



- Knit on the RS, purl on the WS
- Purl on the RS, knit on the WS

Chart  
Size 86 [92] 98

