

#SOFTCUDDLESBABYSWEATER - WOOLLY VERSION

soft cuddles baby sweater - woolly version



#SOFTCUDDLESBABYSWEATER - WOOLLY VERSION

soft cuddles baby sweater - woolly version

ABBREVIATIONS:

st[s] = stitch(es)
k = knit
p = purl
tbl = through the back loop
tog = together
yo = yarn over
RS = right side
WS = wrong side
beg = beginning
rep = repeat
rem = remain(ing)
st st = stocking st
mrk = marker
patt = pattern
cont = continue
dec = decrease(s)

inc front = m1r - Pick up the chain between stitches with the left needle from back to front and knit it.

inc bac = m1l - Pick up the chain between stitches with the left needle from front to back and knit it through the back loop.

6behind = place 3 sts on a cable needle behind the work, k3, k the 3 sts from the cable needle

6front = place 3 sts on a cable needle in front of the work, k3, k the 3 sts from the cable needle

knot = p3tog, leave the st on the needle, yo, p the same 3 sts tog.

button hole = k2tog, yo

The sweater is worked top down, back and forth on circular needles. This makes it easier to adjust the length of the body and sleeves.

PATTERN:

Cast on 72 [72] 76 [76] 76 sts on the UK size 12-10 [3 mm], 60 cm circular needle. Work 3 rows of st st starting with a WS row.

Now work an eyelet row as follows:

Row 4: K2, *yo, k2tog*, rep from * to * until the last 2 sts, k2.

Row 5: P.

Row 6: K and place a marker after 9 [9] 9 [9] 9 sts [sleeve], 25 [25] 27 [27] 27 sts [back] and 9 [9] 9 [9] 9 sts [sleeve]; there are 29 [29] 31 [31] 31 sts left for the front.

Row 7: P.

Row 8: Slip 1 st, k1, inc front, k[5] 5 [5] 5, inc back, k2, mrk, p1, k6, p1, k1, inc front, k7 [7] 9 [9] 9, inc back, k1, p1, k6, p1, mrk, k2, inc front, k5 [5] 5 [5] 5, inc back, k2, mrk, p1, k6, p1, k1, inc front, k7 [7] 9 [9] 9 r, inc back, k1, p1, k6, p1, k1, p1, k2.

Row 9: Slip 2 sts, work in pattern and p all the new sts, k the last st.

On the next row work inc, cables and knots as follows:

Row 10: slip 1 st, k1, inc front, k2 [2] 2 [2] 2, 1 knot, k2 [2] 2 [2] 2, inc back, k2, mrk, p1, 6behind, p1, k1, inc front, k3 [3] 4 [4] 4, 1 knot, k3 [3] 4 [4] 4, inc back, k1, p1, 6front, p1, mrk, k2, inc front, k2 [2] 2 [2] 2, 1 knot, k2 [2] 2 [2] 2, inc back k2, mrk, p1, 6behind, p1, k1, inc front, k3 [3] 4 [4] 4, 1 knot, k3 [3] 4 [4] 4, inc back, k1, p1, 6front, p1, k1, p1, k2.

Row 11: Slip 2 sts, work in pattern and p all the new sts, k the last st.

Row 12: Work in patt and work inc as before.

Row 13: Slip 2 sts, work in patt and p all the new sts, k the last st.

Row 14: Work in patt and work inc as before.

Row 15: Slip 2 sts, work in patt and p all the new sts, k the last st.

Rep the last 6 rows so that inc are worked on every second row and cables and knots on every sixth row. The knots are worked with 5 sts in between as shown in the chart. Adjust the patt as you go.

At the same time work buttonholes in the rib along the front with 4 cm in between.

Work as described until you have 43 [47] 51 [55] 59 sts for the sleeves and 59 [63] 69 [73] 77 sts for the back and 63 [67] 73 [77] 81 sts for the front.

Now finish the sleeves and front-back separately.

Place the sts for the left sleeve on a st holder, cast on 4 sts and work across the back, place the sts of the right sleeve on a st holder, cast on 4 sts between the front and back and work across the front.

Next: Slip 2 sts, work in patt and p all the new sts, k the last st.

Cont in the pattern of cables, knots and buttonholes but without inc until the work measures 23 [24] 27 [29] 31 cm from the neck edge,

Change to the UK size 13-12 [2.5 mm], needles and work 4 rows of rib, k1, p1, and cast off all sts.

SIZES

56 [62] 68 [74] 80

MEASUREMENTS

Chest 1/2:

22 [24] 25,5 [27,5] 28,5 cm

Length:

24 [25] 28 [30] 32 cm

YARN

Woolly Fraya
 100% alpaca
 50 g = 150 m

YARDAGE

100 [100] 100 [150] 150 g

GAUGE

1 glatstrik på pinde nr. 3:

24 m x 36 p = 10 cm x 10 cm

SUGGESTED NEEDLE SIZE

UK size 13-12 and 12-10 [2.5 and 3 mm] needles and double pointed , cable needle

Please note: The needle sizes given above are only suggestions. The size of the needles you need depends on your personal gauge. If you knit firmly you might need a large needle size, if you knit loosely you might need a smaller needle size.

NOTIONS

Markers, stitch holders, 6 buttons

SLEEVES:

Place the sleeve sts on the UK size 12-10 [3 mm] double pointed needles. Start by casting on 4 new sts between the two sides and place a mrk in the middle [armhole] and cont in st st and knot patt on every 6th round. At the same time dec on each side on every 4th [4th] 6th [6th] round until 31 [31] 33 [35] 37 sts rem. Cont until the work measures 13 [14] 16 [20] 23 cm from the armhole. Change to the UK size 13-12 [2.5 mm] double pointed needles and work 4 rounds of rib, k1, p1, and cast off all sts.

Knit the other sleeve in the same way.

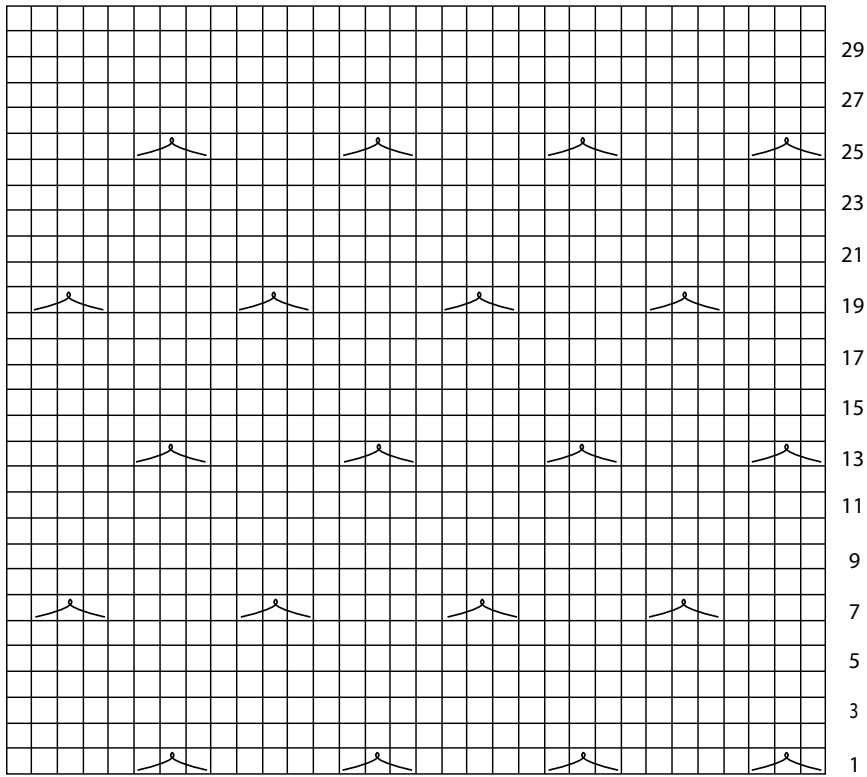
FINISHING:

Pick up sts along the raglan on the left sleeve, cont picking up sts along the left side of the back [approx. 18 sts per 10 cm]. Work 5 rows of st st with the UK size 13-12 [2.5 mm] needle and cast off all sts loosely.

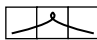
Weave in all ends and press lightly.

Sew on buttons opposite the buttonholes.

Diagram/Diagramm



☐ Knit on right side, purl on wrong side

 Knot: p3tog, leave the st on the needle, yo, p the same 3 sts tog

