

#ODETTE'SSUMMERSWEATER - WOOLLY VERSION

odette's summer sweater - woolly version



FRAYA[®]



#ODETTE'S SUMMERSWEATER - WOOLLY VERSION

odette's summer sweater - woolly version

ABBREVIATIONS:**st(s)** = stitch(es)**k** = knit**p** = purl**patt** = pattern**mrk** = marker**st st** = stocking stitch**yo** = yarn over**tog** = together**tbl** = through the back loop**beg** = beginning**r****ep** = repeat**cont** = continue**RS** = right side**WS** = wrong side**inc** = increase[s], pick up the thread between 2 sts and k it on the RS and p it on the WS**dec** = decrease[s], on the sleeve k2togtbl on the left side of the marker and k2tog on the right side of the marker

The sweater is worked top down, the back and front are worked together and then the sleeves.

YOKE:

On the 13-12 [2,5 mm] double pointed needles cast on 80 [84] 84 [88] 88 sts. Place a mrk at the beg of the round. Work 6 rounds of rib, k1, p1. At the same time place mrks after 24 [26] 28 [30] 32 sts back, 16 [16] 14 [14] 12 sts sleeve, 24 [26] 28 [30] 32 sts front, 16 [16] 14 [14] 12 sts left for the sleeve.

Switch to UK size 11 [3,0 mm] needles.

Round 1: *K3, k2tog, yo, k1, yo, k2togtbl, k3, yo, k until 11 sts before the mrk, yo, k3, k2tog, yo, k1, yo, k2togtbl, k3, mrk, k2, yo, k until 2 sts before the mrk, yo, k2, mrk*, rep from * to * one more time.

Round 2: K.

Round 3: *K2, k2tog, yo, k3, yo, k2togtbl, k2, yo, k until 11 sts before the mrk, yo, k2, k2tog, yo, k3, yo, k2togtbl, k2, mrk, k2, yo, k until 2 sts before the mrk, yo, k2, mrk*, rep from * to * one more time. Front and back : 28 [30] 32 [34] 36 sts, sleeves: 20 [20] 18 [18] 16 sts.

Round 4: K.

Round 1-4 creates the yoke where you inc 8 sts on every 2nd round. Repeat row 1-4 another 12 [12] 13 [13] 14 times. The st count is now: Front-back: 76 [78] 84 [86] 90 sts, sleeves: 68 [68] 70 [70] 70 sts.

Now divide the work. The sts for the sleeves are placed on a st holder and the sts for the front and back are placed on the same circular needles. Cont in patt according to chart 1 and at the same time cast on 4 sts between the front and back and place a mrk at the middle of the 4 sts on each side. Front-back: 80 [82] 88 [90] 94 sts. From here work the patt rep as before with 4 k sts on each side. On every 12th round make inc as follows [the 4th round of the patt]: *K11, 1 inc, k until 11 sts before the mrk, 1 inc, k11, mrk*, rep from * to * one more time.

Cont in this way until the work measures 34 [38] 40 [43] 46 cm lengthwise.

Switch to 13-12 [2,5 mm] circular needles and work 5 rounds of rib, k1, p1. Cast off all sts loosely.

LONG SLEEVES:

Pick up 2 sts on UK size 11 [3,0 mm] double pointed needles, work the 68 [68] 70 [70] 70 sts from the st holder, pick up 2 sts. Place a mrk in the middle of the new sts, i.e. right under the sleeve.

Cont in st st and dec 1 st on each side of the mrk on every 6 [6] 7 [7] 7th round as follows:

Mrk, k2, 1 dec, k until 4 sts before the mrk, 1 dec, k2.

Cont in this way until the work measures 23 [26] 27 [30] 32 cm from the armhole. Change to size 2,5 mm needles and work in rib, k1, p1 the next 5 rounds. Cast off all sts loosely.

Knit the other sleeve in the same way.

FINISHING:

Weave in all ends and block lightly.

SIZES

92 [104] 110 [122] 128

MEASUREMENTS

Width cm: 29 [30] 31 [33] 34

Length: 35 [39] 41 [44] 47

YARN

Woolly Fraya

100% Alpaca

50 g = 150 m

YARDAGE

150 [200] 200 [200] 250 g

GAUGE

26 sts and 36 rows to 10 x 10 cm in st st on UK size 11 [3,0 mm] needles

SUGGESTED NEEDLE SIZE

UK size 13-12 and 11 [2,5 and 3,0 mm] 60 cm circular needles, UK size 13-12 and 11 [2,5 and 3,0 mm] double pointed needles,

Please note: The needle sizes given above are only suggestions. The size of the needles you need depends on your personal gauge. If you knit firmly you might need a large needle size, if you knit loosely you might need a smaller needle size.

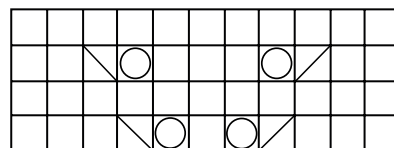
NOTIONS

3 markers

VARIATION

The sweater can be made with short sleeves. In this version the sleeves are finished with a rib when dividing the work.

Change to UK size 13-12 [2,5 mm] circular needles and work 5 rounds of rib over the sts of the sleeves, k1, p1. Cast off all sts.



K on the RS and P on the WS

YO

K2tog

K2togtbl