

#WOOFYSWEATER

woofy sweater



FRAYA[®]

♥ WOOF WOOF! LITTLE TEDDIES CAN ALSO GET COLD, SO GO ON AND KNIT THEM A LITTLE SWEATER TO KEEP THEM WARM. THE LITTLE SWEATER IS WORKED FROM THE TOP DOWN. FIRST YOU KNIT BACK AND FOR ON A CIRCULAR NEEDLE UNTIL THE NECK EDGE IS BIG ENOUGH TO FIT OVER TEDDY'S HEAD. THEN YOU WORK IN THE ROUND USING THE MAGIC LOOP TECHNIQUE OR DOUBLE-POINTED NEEDLES. A FUN LITTLE PROJECT FOR THE INTERMEDIATE KNITTER.

#WOOFYSWEATER

woofy sweater

ABBREVIATIONS:**st(s)** = stitch(es)**k** = knit**p** = purl**RS** = right side**WS** = wrong side**tbl** = through the back loop(s)**tog** = together**Increase** = lift the chain between the stitches onto the left needle and knit it through the back loop

Designed by Vibe Ulrik

This little sweater is worked from the top down. First you knit back and forth until a big enough neck opening is formed to fit the dog's head through. Then you join to work in the round using the magic loop technique and a circular needle or double-pointed needles.

With co 1 cast on 31 sts on a 3.5 mm circular needle or double-pointed needle.

Work rib: *Purl 1, knit 1*, repeat from * to * to the last stitch, purl 1.

Work 2 more rows in rib.

Change to a UK size 7 [4.5 mm] circular needle or double-pointed needles.

Knit 1 row.

Work 13 increase evenly distributed across the next WS row. There are now a total of 44 sts.

Join in the round and place a marker for the beginning of the round (mid back). Work in the round in pattern from Chart 1 or the variation which is Chart 2.

Knit 2 rounds after all rows of the chart have been completed.

Divide the work as follows: Knit 6, place the next 10 sts on a stitch holder, cast on 4 new sts in extension of the sts on the needle, knit 12, place the next 10 sts on a stitch holder, cast on 4 new sts in extension of the sts on the needle, knit 6.

Place a marker in the middle of the new sts on each side. Remove the mid back marker.

Work in the round in stockinette stitch, while working an increase 1 stitch before and 1 stitch after each marker every 3rd round until there are 24 sts on both the front and back. Change to a 3.5 mm circular needle or double-pointed needle. Work 3 rounds in rib [knit 1, purl 1]. Cast off all sts in rib.

Sleeves:

Place the 10 sleeve sts on a UK size 7 [4.5 mm] circular needle or double-pointed needle. Pick up and knit 4 sts along the 4 cast-on sts at the underarm on the body. Join in the round and knit 8 rounds. Change to a 3.5 mm circular needle or double-pointed needle. Work 3 rounds in rib [knit 1, purl 1]. Cast off all sts in rib.

Work the second sleeve the same way as the first.

Note: For the pig the sleeves are worked 4 rounds shorter.

MEASUREMENTS

One size, approx. 12 cm long.

Fits Selfmade pattern 90350

YARN

Warm Hearted Fraya

100% Organic Wool

50 g = 100 m

YARDAGE

Colour 1: 50 g

Colour 2: 50 g

Variation Colour 3: Scrap yarn.

GAUGE

In stockinette stitch on a UK size 7

[4.5 mm] needle:

16 sts = 10 cm

SUGGESTED NEEDLE SIZE

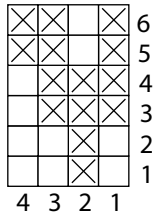
UK size 7 [4.5 mm] and 3.5 mm [no UK equivalent] circular needle (80 cm) or double-pointed needles

Please note: The needle sizes given above are only suggestions. The size of the needles you need depends on your personal gauge. If you knit firmly you might need a large needle size, if you knit loosely you might need a smaller needle size.

NOTIONS

1 small button

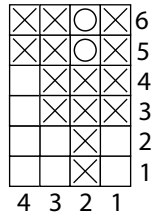
Diagram 1



□ Colour 1

⊗ Colour 2

Diagram 2



□ Colour 1

⊗ Colour 2

○ Colour 3

Hat:

Cast on 32 sts on a UK size 7 (4.5 mm) circular needle or double-pointed needle. Join in the round and place a marker for the beginning of the round. Work 1 round in rib [knit 1, purl 1]. Work 3 rounds in stockinette stitch. Work decreases every other round until there are 4 sts left on the needle as follows: Knit 1, k2tog, knit to 3 sts before marker, k2tog tbl. Break the yarn, pull the end through the 4 sts on the needle. Tighten and weave in the end on the WS. Weave in all ends. Optionally attach a small tassel to the top.

