

#CLOUDILLUSIONSBLANKET

cloud illusions blanket



FRAYA[®]





#CLOUDILLUSIONSBLANKET

cloud illusions blanket

ABBREVIATIONS:**st(s)** = stitch(es)**k** = knit**p** = purl**rep** = repeat**cont** = continue**SEED ST:**

K1, p1 rep from * to * the rest of the row, end with k1.

Rep this row.

The baby blanket is worked back and forth on the circular needle.

Cast on 163 sts, work 11 rows of seed st.

Cont working in seed st across the outermost 8 sts on each side as an edge.

Now work pattern according to figure 1 and charts A, B and C.

All the measurements on figure 1 are measured from the edge, i.e. including the seed st edge and all the charts start with st 1.

Be sure to match gauge.

When the work measures 7 cm work chart A. Place the chart 14 cm [26 sts] from the edge.

When the work measures 10 cm work chart B. Place the chart 52 cm [98 sts] from the edge.

When the work measures 28 cm work chart C. Place the chart 6 cm [11 sts] from the edge.

When the work measures 31 cm work chart C. Place the chart 35 cm [66 sts] from the edge.

When the work measures 33 cm work chart A. Place the chart 62 cm [118 sts] from the edge.

When the work measures 49 cm work chart C. Place the chart 13 cm [24 sts] from the edge.

When the work measures 54 cm work chart B. Place the chart 40 cm [76 sts] from the edge.

When the work measures 65 cm work chart C. Place the chart 68 cm [129 sts] from the edge.

When the work measures 67 cm work chart A. Place the chart 10 cm [19 sts] from the edge.

When the work measures 71 cm work chart C. Place the chart 42 cm [80 sts] from the edge.

When the work measures 82 cm work 11 rows of seed st across all sts, cast off all sts.

Weave in the ends and steam the work into shape.

MEASUREMENTS

85 x 85 cm

YARN

Honest Fraya

100% Cotton

50 g = 75 m

YARDAGE

600 g

GAUGE

In st st on UK size 7 [4.5 mm]

needles: 19 sts x 28 rows = 10 cm

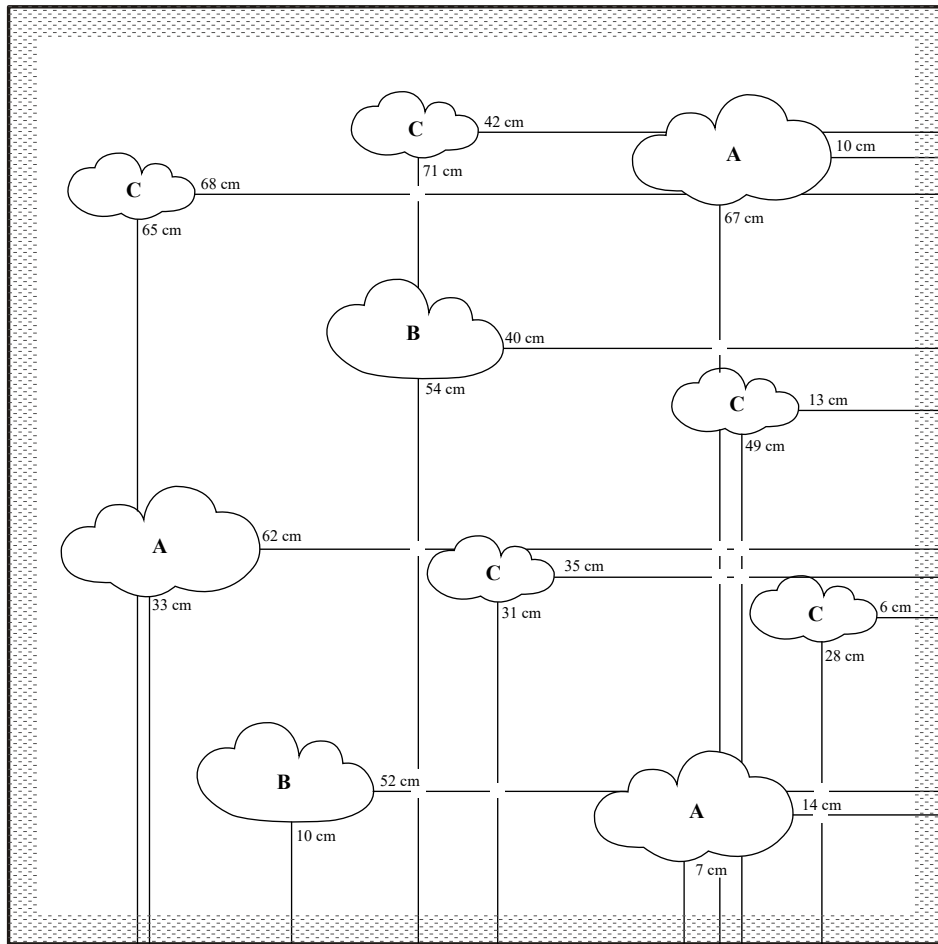
x 10 cm

SUGGESTED NEEDLE SIZE

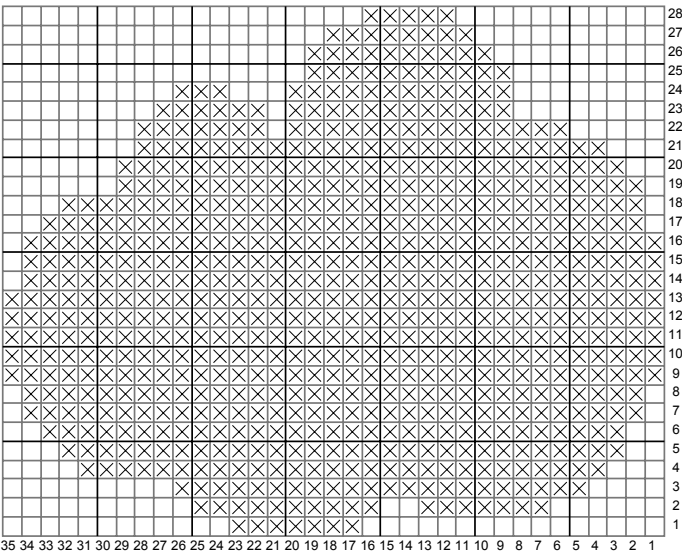
UK size 7 [4.5 mm] circular needle,

80 cm

Please note: The needle sizes given above are only suggestions. The size of the needles you need depends on your personal gauge. If you knit firmly you might need a large needle size, if you knit loosely you might need a smaller needle size.

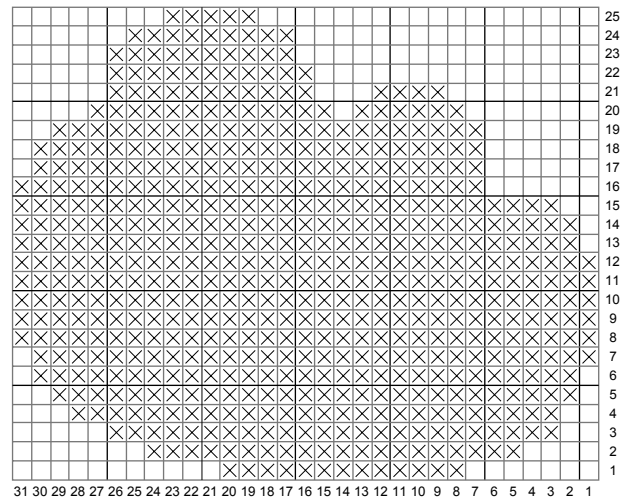


A



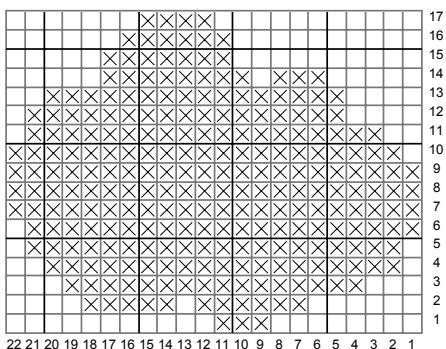
35 34 33 32 31 30 29 28 27 26 25 24 23 22 21 20 19 18 17 16 15 14 13 12 11 10 9 8 7 6 5 4 3 2 1

B



31 30 29 28 27 26 25 24 23 22 21 20 19 18 17 16 15 14 13 12 11 10 9 8 7 6 5 4 3 2 1

C



22 21 20 19 18 17 16 15 14 13 12 11 10 9 8 7 6 5 4 3 2 1

Knit on right side/purl on wrong side

Purl on right side/knit on wrong side