

#CLOUDILLUSIONSBLANKET

# cloud illusions blanket



# FRAYA<sup>®</sup>





#CLOUDILLUSIONSBLANKET

# cloud illusions blanket

**ABBREVIATIONS:****st(s)** = stitch(es)**k** = knit**p** = purl**rep** = repeat**cont** = continue**SEED ST:**

\*K1, p1\* rep from \* to \* the rest of the row, end with k1.

Rep this row.

The baby blanket is worked back and forth on the circular needle.

Cast on 163 sts, work 11 rows of seed st.

Cont working in seed st across the outermost 8 sts on each side as an edge.

Now work pattern according to figure 1 and charts A, B and C.

All the measurements on figure 1 are measured from the edge, i.e. including the seed st edge and all the charts start with st 1.

Be sure to match gauge.

When the work measures 7 cm work chart A. Place the chart 14 cm [26 sts] from the edge.

When the work measures 10 cm work chart B. Place the chart 57 cm [106 sts] from the edge.

When the work measures 28 cm work chart C. Place the chart 6 cm [12 sts] from the edge.

When the work measures 32 cm work chart C. Place the chart 38 cm [72 sts] from the edge.

When the work measures 33 cm work chart A. Place the chart 60 cm [115 sts] from the edge.

When the work measures 49 cm work chart C. Place the chart 13 cm [26 sts] from the edge.

When the work measures 54 cm work chart B. Place the chart 44 cm [84 sts] from the edge.

When the work measures 70 cm work chart C. Place the chart 65 cm [125 sts] from the edge.

When the work measures 72 cm work chart A. Place the chart 11 cm [21 sts] from the edge.

When the work measures 76 cm work chart C. Place the chart 41 cm [78 sts] from the edge.

When the work measures 82 cm work 11 rows of seed st across all sts, cast off all sts.

Weave in the ends and steam the work into shape.

**MEASUREMENTS**

85 x 85 cm

**YARN**

Honest Fraya

100% Cotton

50 g = 75 m

**YARDAGE**

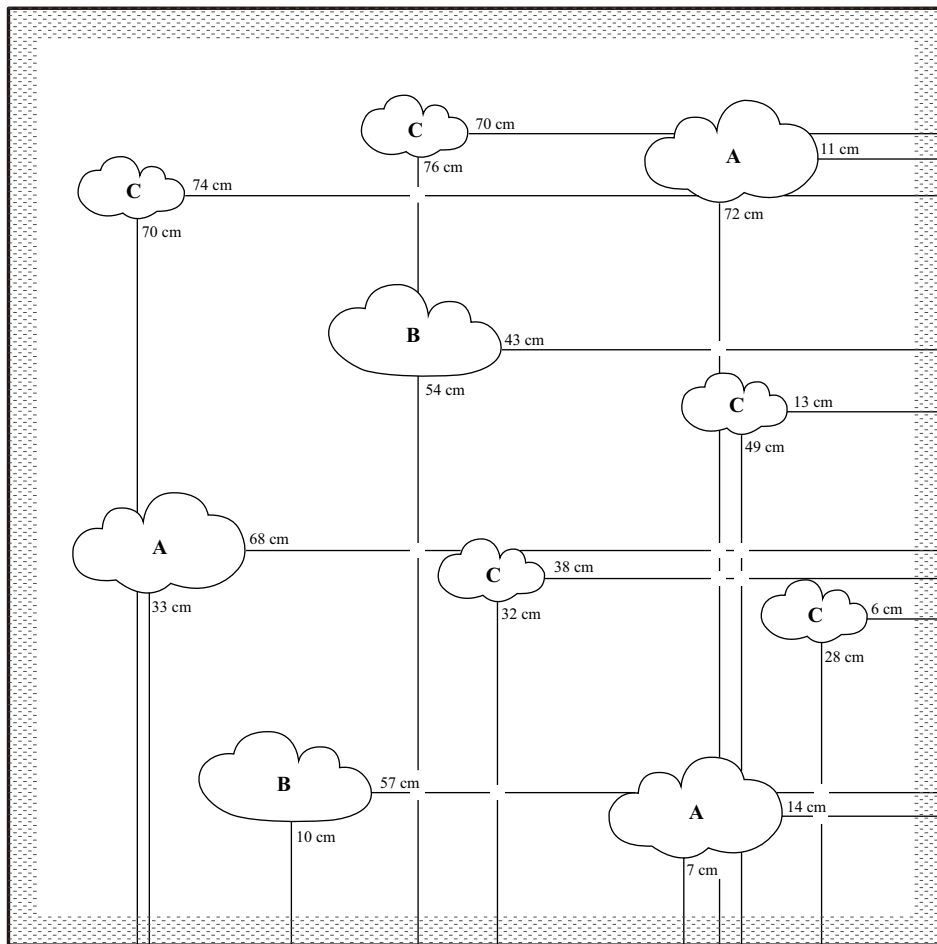
600 g

**GAUGE**

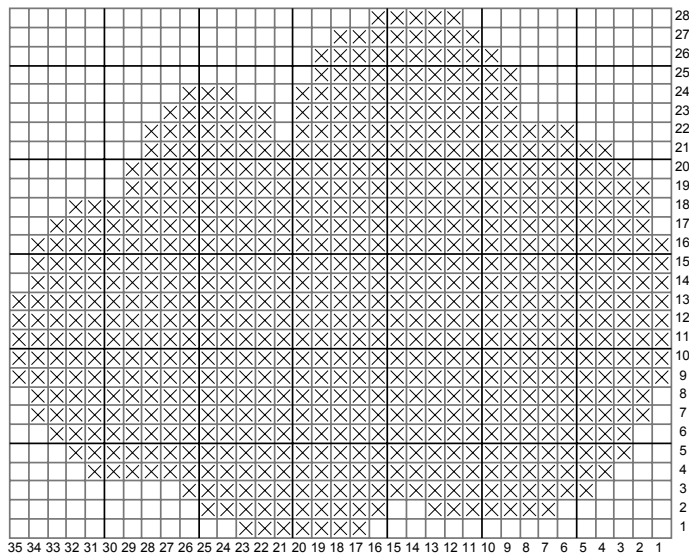
In st st on UK size 7 [4.5 mm]

needles: 19 sts x 28 rows = 10 cm  
x 10 cm**SUGGESTED NEEDLE SIZE**UK size 7 [4.5 mm] circular needle,  
80 cm

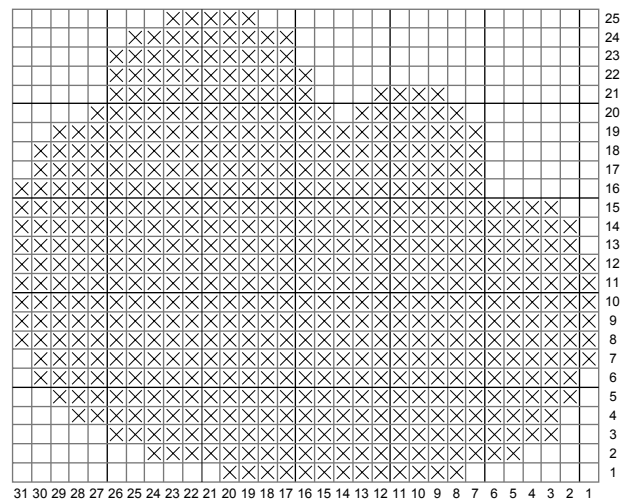
Please note: The needle sizes given above are only suggestions. The size of the needles you need depends on your personal gauge. If you knit firmly you might need a large needle size, if you knit loosely you might need a smaller needle size.



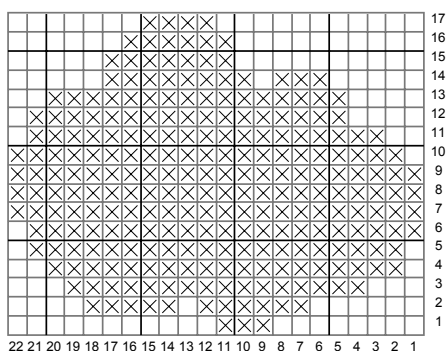
**A**



**B**



**C**



- Ret på retsiden, vrang på vrangsidan/Rett på rettsiden, vrang på vrangsidan/  
Rät på rätsidan, avig på avigsidan/1 M glatt re [Hin-R re, Rück-R li]
- Vrang på retsiden, ret på vrangsidan/Vrang på rettsiden, rett på vrangsidan/  
Avig på rätsidan, rät på avigsidan/1 M glatt li [Hin-R li, Rück-R re]