

#HOTDINNERDATE

hot dinner date



FRAYA[®]

♥ WHO'S HAVING A HOT DINNER DATE? YOU ARE! MAKE THE LOVELY PLACEMATS AND POTHOLDERS BY CROCHETING CORNER-TO-CORNER - ONCE YOU HAVE MEMORIZED THE PATTERN, IT IS A PIECE OF CAKE. IF YOU ARE AN ADVANCED BEGINNER, THIS IS THE PERFECT PROJECT FOR YOU - SIMPLY FOLLOW THE DETAILED CHARTS AND INSTRUCTIONS.




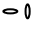

#HOTDINNERDATE

hot dinner date

ABBREVIATIONS:

st[s] = stitch[es]
 cs = chain stitch
 sls = slip stitch
 tr = treble crochet
 rep = repeat

KEY:

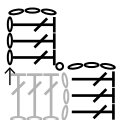
→ = begin here
 = treble crochet
 = chain stitch
 = slip stitch

CORNER-TO-CORNER PATTERN:

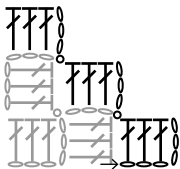
Row 1: 6 cs, 1 tr in 4th st from hook, 2 tr, turn.



Row 2: 6 cs, 1 tr in 4th st from hook, 2 tr, 1 sls into next cs-space, 3 cs, 3 tr into cs-space, turn.



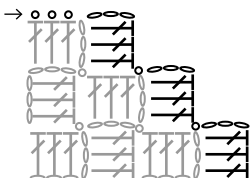
Row 3: 6 cs, 1 tr in 4th st from hook, 2 tr, *1 sls into next cs-space, 3 cs, 3 tr into cs-space*, rep from * to * until you reach the edge, ending with a sls into next space.



Rep row 3 until work has the desired width, then decrease from one side.

DECREASE:

Row 1: 3 sls, 3 cs, 3 tr into next cs-space, *1 sls into next cs-space, 3 cs, 3 tr into cs-space*, rep from * to * until you reach the edge, ending with a sls into next space.

**MEASUREMENTS**

Placemat:
 bredde ca. 32 cm
 længde ca. 44 cm

Potholder:
 bredde ca. 19 cm
 længde ca. 26 cm

YARN

Honest FRAYA
 100 % Cotton
 50 g = 75 m

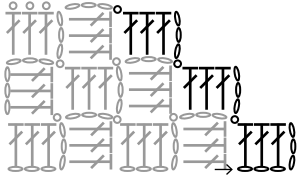
YARDAGE

Placemat
 150 g
 Potholder
 150 g

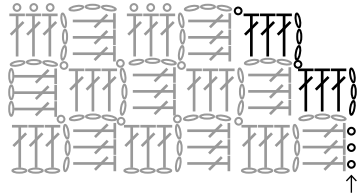
SUGGESTED NEEDLE SIZE

UK size 9 [3.5 mm] crochet hook

Row 2: 6 cs, 1 tr in 4th st from hook, 2 tr, *1 sls into next cs-space, 3 cs, 3 tr into cs-space*, rep from * to * until you reach the edge, ending with a sls into next space.



Rep these 2 rows until work has the desired length, then decrease from both sides.



When there is no room for any more squares, break the yarn and weave in the ends.

PLACEMAT:

Crochet pattern until the placemat is approx. 32 cm wide and 44 cm long.

POTHOLDER:

Crochet pattern until the potholder is approx. 19 cm wide and 26 cm long. It is important that the potholder is not worked too loosely.

