

#HOTDINNERDATE

# hot dinner date



# FRAYA<sup>®</sup>

♥ WHO'S HAVING A HOT DINNER DATE? YOU ARE! MAKE THE LOVELY PLACEMATS AND POTHOLDERS BY CROCHETING CORNER-TO-CORNER - ONCE YOU HAVE MEMORIZED THE PATTERN, IT IS A PIECE OF CAKE. IF YOU ARE AN ADVANCED BEGINNER, THIS IS THE PERFECT PROJECT FOR YOU - SIMPLY FOLLOW THE DETAILED CHARTS AND INSTRUCTIONS.




#HOTDINNERDATE

# hot dinner date

**ABBREVIATIONS:**

st[s] = stitch[es]  
 cs = chain stitch  
 sls = slip stitch  
 tr = treble crochet  
 rep = repeat

**KEY:**

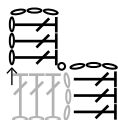
→ = begin here  
 = treble crochet  
 = chain stitch  
 = slip stitch

**CORNER-TO-CORNER PATTERN:**

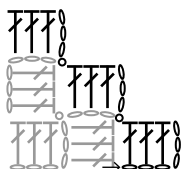
**Row 1:** 6 cs, 1 tr in 4th st from hook, 2 tr, turn.



**Row 2:** 6 cs, 1 tr in 4th st from hook, 2 tr, 1 sls into next cs-space, 3 cs, 3 tr into cs-space, turn.



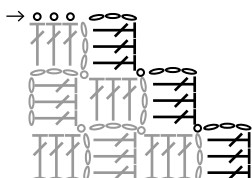
**Row 3:** 6 cs, 1 tr in 4th st from hook, 2 tr, \*1 sls into next cs-space, 3 cs, 3 tr into cs-space\*, rep from \* to \* until you reach the edge, ending with a sls into next space.



Rep row 3 until work has the desired width, then decrease from one side.

**DECREASE:**

**Row 1:** 3 sls, 3 cs, 3 tr into next cs-space, \*1 sls into next cs-space, 3 cs, 3 tr into cs-space\*, rep from \* to \* until you reach the edge, ending with a sls into next space.

**MEASUREMENTS**

Placemat:  
 bredde ca. 32 cm  
 længde ca. 44 cm

Potholder:  
 bredde ca. 19 cm  
 længde ca. 26 cm

**YARN**

Honest FRAYA  
 100 % Cotton  
 50 g = 75 m

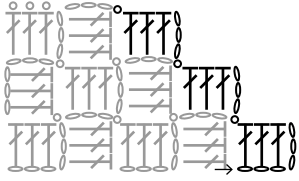
**YARDAGE**

Placemat  
 150 g  
 Potholder  
 150 g

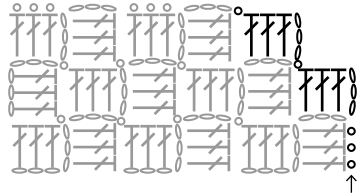
**SUGGESTED NEEDLE SIZE**

UK size 9 [3.5 mm] crochet hook

**Row 2:** 6 cs, 1 tr in 4th st from hook, 2 tr, \*1 sls into next cs-space, 3 cs, 3 tr into cs-space\*, rep from \* to \* until you reach the edge, ending with a sls into next space.



Rep these 2 rows until work has the desired length, then decrease from both sides.



When there is no room for any more squares, break the yarn and weave in the ends.

**PLACEMAT:**

Crochet pattern until the placemat is approx. 32 cm wide and 44 cm long.

**POTHOLDER:**

Crochet pattern until the potholder is approx. 19 cm wide and 26 cm long. It is important that the potholder is not worked too loosely.

