

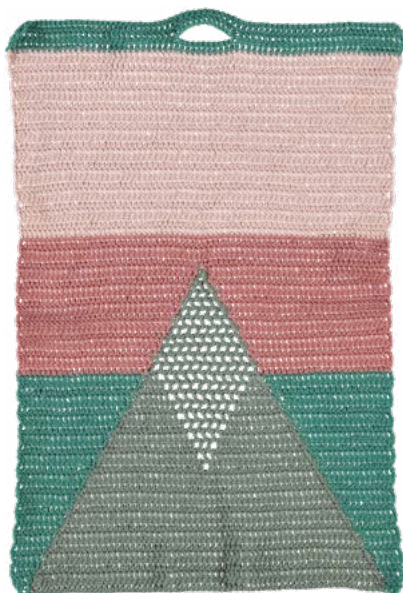
#LUCKYDISHSTOWEL

lucky dishes towel



FRAYA[®]

♥ SURPRISE A KITCHEN AFICIONADO WITH THIS FINE TEA TOWEL IN COLOURFUL FRAYA. WORKED IN TREBLE CROCHET IN A BUNCH OF DIFFERENT COLORS, THE RESULT IS MAGNIFIQUE! A PROJECT FOR YOU WHO ARE BECOMING AN EXPERIENCED CROCHETER.



#LUCKYDISHESTOWEL

lucky dishes towel

ABBREVIATIONS:

st(s) = stitch(es)
 cs = chain stitch
 tr = treble crochet

PATTERN

Turn each row by working 3 cs and begin next row in 2nd tr – by doing this the 3 cs replace 1st tr and the edge becomes even. The 1st tr [the 3 cs] is not described in the pattern.
 Color changes look their best when the last 2 loops of a tr are worked with the new color. Be careful not to tighten the yarn too much when changing the color.

Using color 1, work 13 cs, break the yarn – this will become the hanger later on.

TEA TOWEL:

Work 2 cs with color 1, 67 cs with color 2, and 5 cs with color 1.

Row 1: Work 2 tr with color 1, beginning in 4th cs from hook, work 67 tr with color 2, 3 tr with color 1, turn.

Row 2: Work 3 tr with color 1, 65 tr with color 2, 4 tr with color 1, turn.

Row 3: Work 4 tr with color 1, 63 tr with color 2, 5 tr with color 1, turn.

Row 4-12: Continue in this way to decrease the number of middle tr in color 2 – you now have 45 tr in color 2 and 14 tr in color 1 on each side.

Follow the chart and crochet the lace pattern in the middle of the towel.

Row 13: Work 13 tr with color 1, 10 tr with color 2, now follow chart using color 2, the middle st of chart is middle st of towel. When 1st row of chart has been worked, crochet 10 tr with color 2, 13 tr with color 1.

Row 14- 22: Continue to decrease the number of middle tr in color 2 while working the charted lace pattern. You have now worked the first 10 rows of chart and have 25 middle sts in color 2 and 24 tr in color 1 on each side.

Replace color 1 with color 3 on both sides.

Row 23- 34: The lace pattern is now done.

Row 35-37: Continue with color 3 and work 72 tr, turn.

Change to color 4.

Row 38- 56: 72 tr, turn.

Change to color 1.

Row 57: 72 tr, turn.

Row 58: 29 tr, crochet 1 tr through 1st cs of hanger as well as next st of towel, work 11 tr along hanger, skip 11 sts on towel, crochet 1 tr through last cs of hanger as well as next st of towel, 30 tr, turn.

Row 59: 72 tr, break the yarn.

Weave in the ends and steam block the towel.

MEASUREMENTS

35 cm x 54 cm

YARN

Colourful Fraya

100 % Cotton

50 g = 170 m

YARDAGE

50 g of 4 different colors

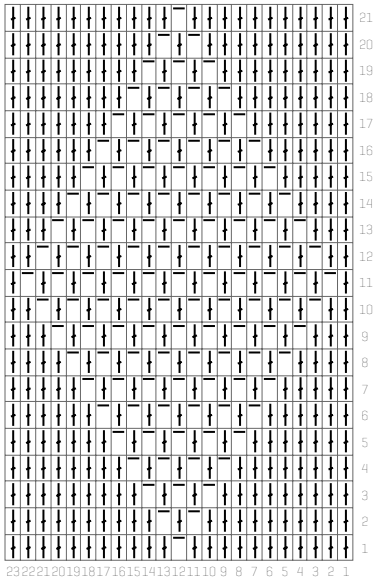
CROCHET GAUGE



20 tr x 11 rows = 10 cm x 10 cm.

SUGGESTED NEEDLE SIZE

UK size 11 [3 mm] crochet hook

Please note: It is important to obtain gauge. The work should have a close texture. Try with a smaller or larger needle if necessary.



 1 treble crochet
 1 chain stitch

