

#CLEANINGFAIRYDISHCLOTHS

cleaning fairy dish cloths



#CLEANINGFAIRYDISHCLOTHS

cleaning fairy dish cloths

ABBREVIATIONS:

St(s) = Stitch(es)**k** = Knit**p** = Purl**sl 1 wyif** = Slide 1 stitch with yarn in front
[edge stitch – the first stitch of every row]**rep** = Repeat**ed st** = Edge stitch [slip the first st of the
row and k the last st on the row]

ZIGZAG PATTERN

The dish cloth is worked by knitting the zig zag pattern of diagram 1 and finishing the edges with a few rows of garter stitch.

Using 3 mm knitting needles, cast on 66 sts. Knit 5 rows while working ed st at each end. Now work zigzag pattern while still knitting the first 3 and last 3 sts, thus working a garter stitch edge, still with ed st at each end.

Work like this:

Row 1: Slide 1 wyif, k2, *k1, p2, k2, p1, k1, p2, k2, p1*, rep from * to * to last 3 sts, k3.

Row 2: Slide 1 wyif, *k2, p2, k2*, rep from * to * til last 3 sts, k3.

Row 3: Slide 1 wyif, k2, *p1, k2, p2, k1, p1, k2, p2, k1*, rep from * to * to last 3 sts, k3.

Row 4: Slide 1 wyif, k2, *k2, p2*, rep from * to * to last 3 sts, k3.

Rows 1-4 form pattern. Repeat until work measures 23 sm. Knit 5 rows and cast off all stitches.

DIAGONAL PATTERN

Using 3 mm knitting needles, cast on 66 sts. Knit 5 rows, sliding the first stitch of every row with yarn in front to make a nice edge. Now work diagram 2, diagonal pattern, while still knitting the first 3 and last 3 sts, thus working a garter stitch edge.

Work like this:

Row 1: Slide 1 wyif, k2, *p3, k3*, rep from * to * to last 3 sts, k3.

Row 2: Slide 1 wyif, k2, p3, k3, rep from * to * to last 3 sts, k3.

Row 3: Slide 1 wyif, k2, *p2, k3, p1*, rep from * to * to last 3 sts, k3.

Row 4: Slide 1 wyif, k2, *k1, p3, k2*, rep from * to * to last 3 sts, k3.

Row 5: Slide 1 wyif, k2, *p1, k3, p2*, rep from * to * to last 3 sts, k3.

Row 6: Slide 1 wyif, k2, *k2, p3, k1*, rep from * to * to last 3 sts, k3.

Row 7: Slide 1 wyif, k2, *k3, p3*, rep from * to * to last 3 sts, k3.

Row 8: Slide 1 wyif, k2, *k3, p3*, rep from * to * to last 3 sts, k3.

Row 9: Slide 1 wyif, k2, *k2, p3, k1*, rep from * to * to last 3 sts, k3.

Row 10: Slide 1 wyif, k2, *p1, k3, p2*, rep from * to * to last 3 sts, k3.

Row 11: Slide 1 wyif, k2, *k1, p3, k2*, rep from * to * to last 3 sts, k3.

Row 12: Slide 1 wyif, k2, *p2, k3, p1*, rep from * to * to last 3 sts, k3.

Rows 1-12 from pattern. Repeat until work measures 23 cm. Knit 5 rows and cast off all stitches.

DOUBLE MOSS STITCH PATTERN:

Using 3 mm knitting needles, cast on 68 sts. Knit 5 rows, sliding the first stitch of every row with yarn in front to make a nice edge. Now work diagram 3, double moss stitch pattern, while still knitting the first 3 and last 3 sts, thus working a garter stitch edge.

Work like this:

Row 1: Slide 1 wyif, k2, *k2, p2*, rep from * to * to last 3 sts, k3.

Row 2: Slide 1 wyif, k2, *k2, p2*, rep from * to * to last 3 sts, k3.

Row 3: Slide 1 wyif, k2, *p2, k2*, rep from * to * to last 3 sts, k3.

Row 4: Slide 1 wyif, k2, *p2, k2*, rep from * to * to last 3 sts, k3.

Rows 1-4 form pattern. Repeat until work measures 23 cm. Knit 5 rows and cast off all stitches.

On the next page is our beautifully designed ribbon that you can cut out and fasten around one or more dishcloths – makes a wonderful gift idea.

MEASUREMENTS

24 x 24 cm

YARN

Colourful Fraya

100% Cotton

50 g = 170 m

YARDAGE

Cirka 40 g.

GAUGE

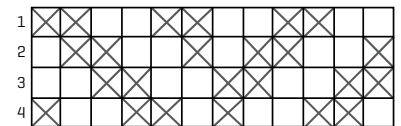
28 sts x 38 = 10 cm x 10 cm over
pattern on 3 mm knitting needles

SUGGESTED NEEDLE SIZE

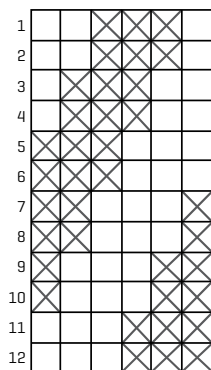
Knitting needles 3 mm/ UK size 11

Please note: The needle sizes given above are only suggestions. The size of the needles you need depends on your personal gauge. If you knit firmly you might need a large needle size, if you knit loosely you might need a smaller needle size.

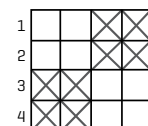
ZIGZAG PATTERN



DIAGONAL PATTERN



DOUBLE MOSS STITCH PATTERN



Non Commercial - You may not use this material for commercial purposes.
Copyright © 2021 FRAYAYARN.COM

FRAYA®

Handmade by me

FRAYA®

Good vibes only

FRAYA®

Good vibes only

FRAYA®

Handmade by me