



© Lana Grossa GmbH

Design 17 – Nordic Knits 2

---

**CARDIGAN**  
**NATURAL ALPACA LUNGO**

# CARDIGAN · NATURAL ALPACA LUNGO

## Design 17 – Nordic Knits 2



**Size** 36/38 (40/42, 44/46, 48/50)

Instructions are given for first size. Figures in parenthesis refer to larger sizes. When only one figure is given, it applies to all sizes.

**Materials:** 300 (350, 400, 450) g of Lana Grossa **Natural Alpaca Lungo** (89% baby alpaca, 11% polyamide; 190 m/50 g) in Beige (col 2). Size 4.5 and 6.5 mm circular needles, each 40 and 100 cm long; stitch markers; 3 (3, 4, 4) 25 mm buttons.

**Note:** Work with 2 strands held tog throughout.

**St st:** K on RS, p on WS; k every rnd.

**Rib patt:** K1, p1.

**Skp:** Sl 1 kwise, k1, pass slipped st over knitted st.

**Two-stitch selvage:** At beg of row, sl 1 pwise wyif, k1, patt to last 2 sts, sl 1 pwise wyif, k1.

**Full-fashion decrease [armhole shaping]:** At beg of RS row, k2, k2tog; at end of RS row, work to last 4 sts, skp, k2.

**Full-fashion decrease [V-neck shaping]:** At beg of RS row, k3, k2tog; at end of RS row, work to last 5 sts, skp, k3.

**Buttonhole:** At beg of RS row, sl 1 pwise wyif, sl 1 kwise, p1, pass slipped st over purled st; yo, k1, p1, work to end.

**Center of collar:** Work according to chart. Numbers at right edge of chart indicate RS rows; on WS rows, work sts as they appear. Work center of collar according to chart, work decs at each edge as given in instructions.

**Collar decreases:** At beg of row, sl 1 pwise wyif, sl 1 kwise, p1, pass slipped st over purled st.

**Gauges:** 12 sts and 17 rows/rnds = 10 x 10 cm in St st on size 6.5 mm needles; 15 sts and 22 rows/rnds = 10 x 10 cm in rib patt on size 4.5 mm needles.

**Fronts and back:** Worked in one piece to underarm. With longer size 4.5 mm circular needle and 2 strands held tog, cast on 135 (143, 155, 163) sts. Next row (RS): Two-stitch selvage, \* p1, k1; rep from \* to last 3 sts, p1, two-stitch selvage. Work in rib patt as set by last row for a total of 6 rows, ending with a WS row. Change to longer size 6.5 mm circular needle. Next row (RS): Two-stitch selvage, p1, k1, p1; work in St st to last 5 sts, p1, k1, p1, two-stitch selvage. Place markers 35 (37, 40, 42) sts in from each edge = 35 (37, 40, 42) sts for each front and 65 (69, 75, 79) sts for back. Next row (WS): Work in patt as established. Next row (RS): Work buttonhole

at right front. Work rem 2 (2, 3, 3) buttonholes spaced 12 (13, 9, 10) cm apart. Work 1 WS row. Shape sides: Next RS (inc) row: \* Patt to 2 sts before marker, M1R, k2, slm, k2, M1R; rep from \* once more, work to end. Rep inc row every 10 (10, 12, 12)th row 2 more times = 147 (155, 167, 175) sts: 38 (40, 43, 45) sts for each front and 71 (75, 81, 85) sts for back. Work even until piece meas 26 (27, 28, 29) cm from end of rib patt, ending with a WS row. **Divide for fronts and back:** Next row (RS): \* Work to 2 sts before m, bind off 4 sts and rem m; rep from \* once more, work to end = 36 (38, 41, 43) sts for each front and 67 (71, 77, 81) sts for back.

Slide back and right front sts to holders and work **left front** first as foll: Next row (WS): Work in patt as established. Shape armhole: Working full-fashion dec, dec 1 st at beg of next 6 RS rows and when piece meas 28 (29, 30, 31) cm from end of rib patt, shape neck as foll: Next row (WS): Bind off 5 sts, work to end. Working full-fashion dec, dec 1 st at end of next RS row, then every alt 4th and 2nd row 4 times = 16 (18, 21, 23) sts. When armhole meas 20 (21, 22, 23) cm, shape shoulder as foll: At beg of RS rows, bind off 5 sts 2 times, 6 sts 1 time ( 6 sts 3 times / 7 sts 3 times / 7 sts 1 time, 8 sts 2 times). No sts rem. **Back:** Return 67 (71, 77, 81) held back sts to needle and with WS facing, rejoin yarn. Next row (WS): Work in St st. Shape armholes: Working full-fashion dec, dec 1 st at each end of next 6 RS rows = 55 (59, 65, 69) sts. Work even until armhole meas 20 (21, 22, 23) cm, ending with a WS row. Shape shoulders: At each shoulder edge bind off 5 sts 2 times, 6 sts 1 time (6 sts 3 times / 7 sts 3 times / 7 sts 1 time, 8 sts 2 times). Bind off rem 23 sts. **Right front:** Return 36 (38, 41, 43) held right front sts to needle and with WS facing, rejoin yarn. Complete as given for left front, reversing all shaping.

**Sleeves:** With shorter size 4.5 mm circular needle and 2 strands held tog, cast on 30 (30, 32, 32) sts. Place beg of rnd marker and join for working in rnds. Work in rib patt for 6 rnds, increasing 1 st at end of last rnd – 31 (31, 33, 33) sts. Change to shorter size 6.5 mm circular needle. Work in St st for 5 rnds. Shape sleeve: Next inc rnd: K1, M1R, knit to 1 st before end of rnd, M1R, k1. Rep inc rnd every 6th rnd 9 times (every alt 6th and 5th rnd 10 times / every alt 6th and 5th rnd 10 times / every 5th rnd 12 times) = 51 (53, 55, 57) sts. Work even until piece meas 42 cm from cast-on. Shape sleeve cap: Bind off 1 st at beg of rnd, work cap back and forth in rows and shape cap as foll: Bind off 2 sts at beg of next 2 rows. Working full-fashion dec, dec 1 st at each end of next 5 (6, 6, 7) RS rows. Work 1 WS row. Bind off 2 sts at beg of next 2 rows, 3 sts at beg of next 2 rows, 4 sts at beg of next 2 rows. Bind off rem 18 (18, 20, 20) sts.

**Collar:** With longer size 4.5 mm circular needle and 2 strands held tog, cast on 135 sts. **Row 1 (RS):** Two-stitch selvage; work row 1 of chart over 67 sts, plm, work row 1 of chart to last 2 sts, two-stitch selvage. **Row 2 (WS):** Two-stitch selvage; work row 2 of chart to last 2 sts, two-stitch selvage.

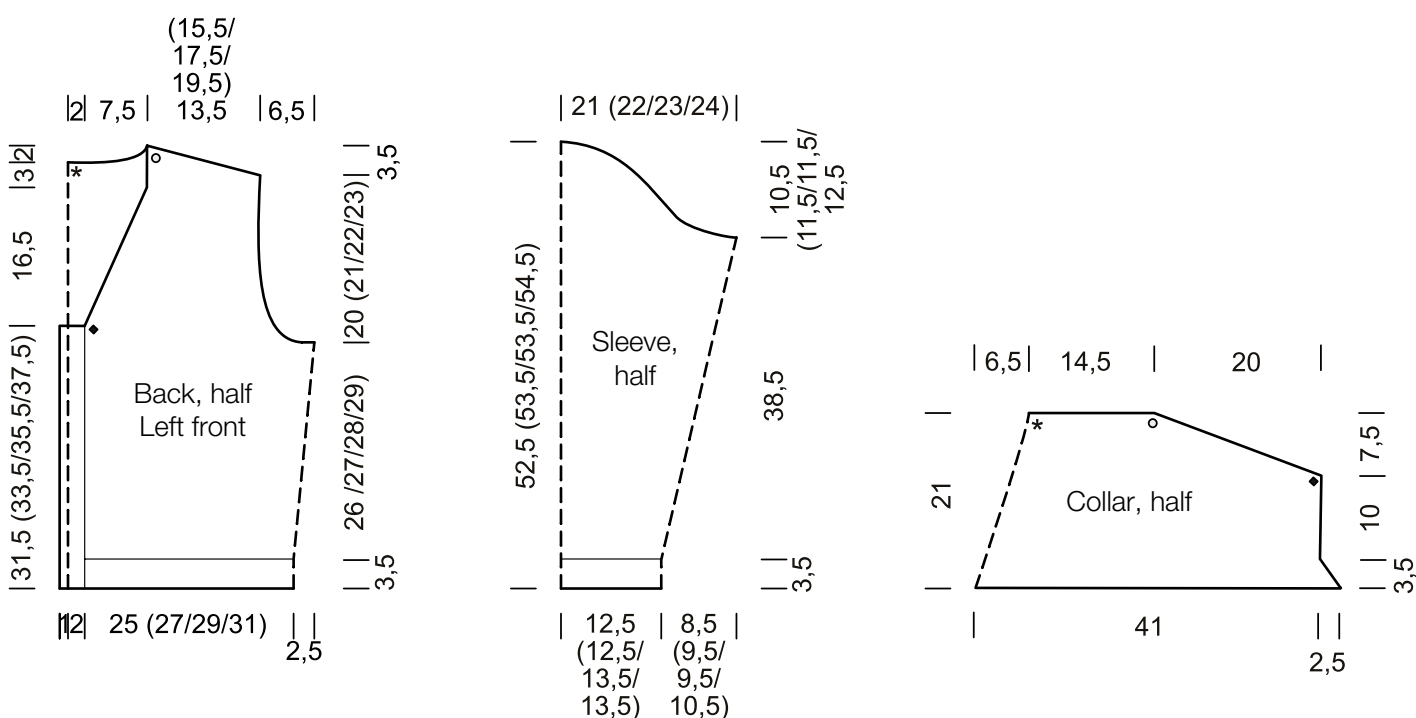
# CARDIGAN · NATURAL ALPACA LUNGO

## Design 17 – Nordic Knits 2



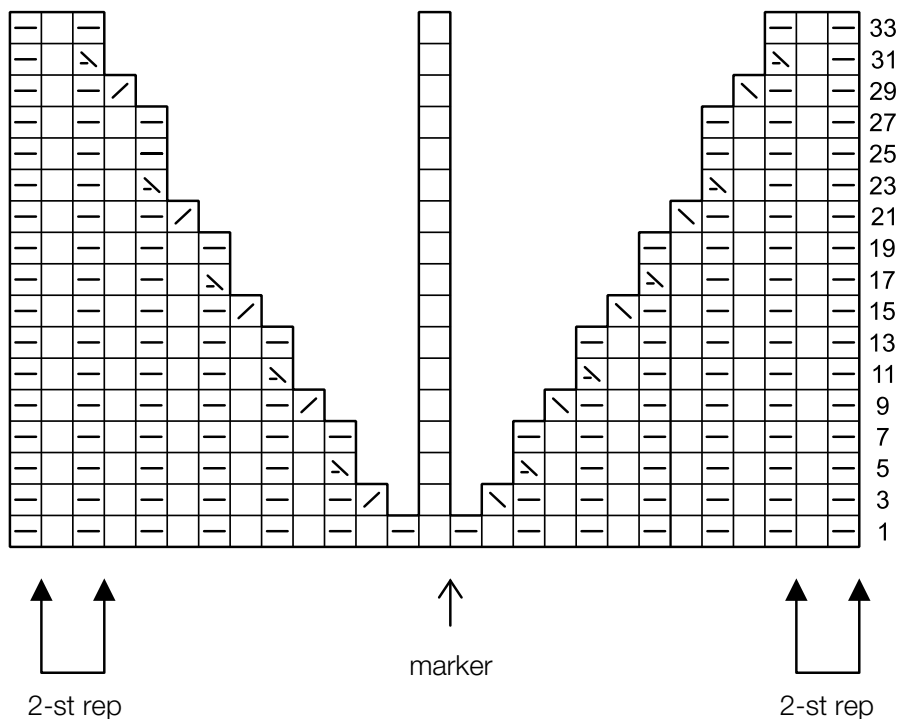
**Rows 3 – 10:** Work collar decs at beg of every row. **Rows 11 – 28:** Work even. Bind off 3 sts at beg of next 4 rows. Omitting decs at center of collar, work in rib patt across all sts and bind off 4 sts at beg of next 12 rows = 47 sts. Bind off.

**Finishing:** Sew shoulder seams. Set sleeves into armholes. Matching \* to \* and • to •, sew bound-off edge of collar to neck edge. Carefully weave in all ends. Sew on buttons.



# CARDIGAN · NATURAL ALPACA LUNGO

## Design 17 – Nordic Knits 2



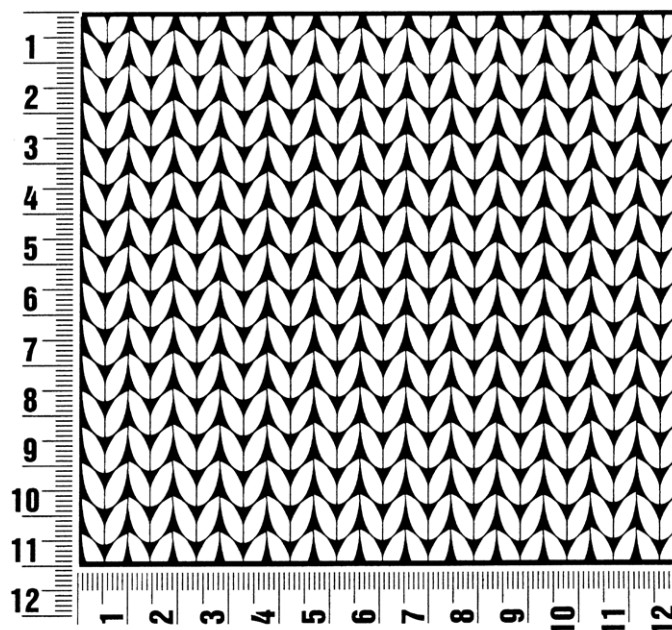
### Chart key:

- = k1 on RS, p1 on WS
- ▢ = p1 on RS, k1 on WS
- ▤ = k2tog on RS, p1 on WS
- ▥ = skp (sl 1 kwise, k1, pass slipped st over knitted st) on RS, p1 on WS
- ▧ = p2tog on RS, k1 on WS

## Gauge Swatch

### Before you begin ...

...make a gauge swatch. Use the recommended needles, yarns and pattern stitch for your gauge swatch. It should measure approx. 12 cm x 12 cm. Cast-on and bind-off rows, as well as selvage stitches should not be included in the measurement. Pin your swatch and block it as you would the finished pieces of the garment. Count stitches and rows over 10 cm. If your gauge swatch is too small, switch to larger needles. If your gauge swatch is too big, switch to smaller needles.



## Abbreviations

**beg** = begin(ning) · **ch** = chain · **cont** = continue · **dec** = decomp(e)(ing) · **inc** = increas(e)(ing) · **k** = knit · **kwise** = as if to knit  
**meas** = measures · **M1L** = lift strand between sts from front to back and knit this strand through the back loop · **M1R** = lift strand between sts from the back and knit this strand through the front loop · **patt** = pattern · **pm** = place marker · **p** = purl  
**pwis** = as if to purl · **rem** = remain(ing) · **rep** = repeat(s) · **rev St st** = reverse stockinette stitch · **rnd(s)** = round(s) · **RS** = right side · **sc** = single crochet · **skp** = slip 1 stitch as if to knit, knit 1 stitch, pass slipped stitch over knitted stitch · **sk2p** = slip 1 stitch as if to knit, knit 2 together, pass slipped stitch over knitted stitch · **s2kp** = slip 2 stitches as if to knit, k 1 stitch, pass slipped stitches over knitted stitch · **sl** = slip · **st(s)** = stitch(es) · **St st** = stockinette stitch · **tbl** = through the back loop · **tog** = together · **wyib** = with yarn in back of work · **wyif** = with yarn in front of work · **WS** = wrong side · **yo(s)** = yarn over(s)

### Publisher's Info

**Publisher:** Lana Grossa GmbH, Gaimersheim, www.lana-grossa.com

**Photographer:** Lana Grossa