



www.lanagrossa.com

PULLOVER · COOL WOOL
Design 10 – Merino Edition 02

PULLOVER · COOL WOOL

Design 10 – Merino Edition 02



Size 36/38 (40/42, 44/46, 48/50)

Instructions are given for first size. Figures in parenthesis refer to larger sizes. When only one figure is given, it applies to all sizes.

Materials: 500 (550, 600, 650) g of Lana Grossa **Cool Wool** (100% pure wool; 160 m/50 g) in Reed Green (**col 2079**). Size 3 and 3.5 mm circular needles, each 40 and 80 cm long.

St st in rnds: K every rnd.

Rev St st in rnds: P every rnd.

Brioche rib stitch: Rnd 1: Make a yo, then sl next st pwise.

Rnd 2: Ktog slipped st with its yo. Rep rnds 1 and 2. **Note:** Stitch and yo are treated as 1 stitch.

Increase: Rnd 1: Yo. **Rnd 2:** P1tbl into yo. Rep rnds 1 and 2.

Yoke: Work according to chart. Chart begins with a 4-st rep. Incs are worked on rnds 16, 32, 42 and 62 = 12-st rep. Numbers at right edge of chart indicate rnds. Work all rnds from right to left.

Rib patt: K1, p1.

I-cord bind-off: Cast on 2 sts onto left needle. * K1, k2tog tbl, transfer 2 sts from right needle to left needle; rep from *.

Gauge: 24 sts and 36 rnds = 10 x 10 cm in patt on size 3.5 mm needles.

Pullover: Worked in rnds from the top down. With shorter size 3 mm circular needle cast on 88 (90, 91, 98) sts. Place beg of rnd marker and join for working in rnds. Purl 3 rnds, knit 1 rnd and at same time, work no incs (M1R after every 15th st 6 times / M1R after every 8th st 13 times / M1R after every 7th st 14 times) = 88 (96, 104, 112) sts. Change to shorter size 3.5 mm circular needle. Work rnds 1 – 63 of chart = 22 (24, 26, 28) patt reps per rnd and 264 (288, 312, 336) sts after rnd 63. Rep rnd 63 until piece meas 26 (27, 28, 29) cm from cast-on. **NOTE:** Change to longer size 3.5 mm circular needle as stitch count increases. **Divide for body and sleeves:** Next rnd: Work 85 (93, 101, 109) sts, place next 47 (51, 55, 59) sts on holder for sleeve, cast on 23 (23, 27, 31) sts for underarm, work 85 (93, 101, 109) sts, place next 47 (51, 55, 59) sts on holder for sleeve, cast on 23 (23, 27, 31) sts for underarm = 216 (232, 256, 280) sts for body. Cont in patt for 30 cm. Change to size 3 mm circular needle. Work in rib patt for 6 cm. Work I-cord bind-off. **Sleeves:** With size 3.5 mm circular needle, RS facing, beg at center of underarm, pick up and k 13 (13, 15, 17) sts along underarm cast-on, work 47 (51, 55, 59) held sleeve sts, pick up and k 12 (12, 14, 16) sts along underarm cast-on = 72 (76, 84, 92) sts. Place beg of rnd marker and join for working in rnds. Cont in patt for 32 (31, 30, 29) cm. Change to size 3 mm circular needle. Next dec rnd: Work in rib patt, k2tog or p2tog as needed for rib patt, every 2nd and 3rd st 24 (24, 28, 30) times = 48 (52, 56, 62) sts. Cont until a total of 10 cm has been worked in rib patt. Work I-cord bind-off.

Finishing: Carefully weave in all ends.

Chart

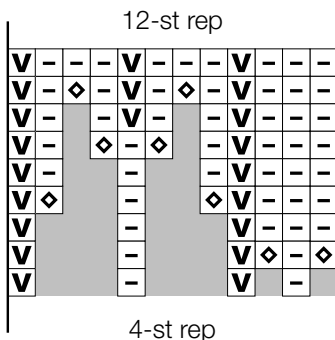
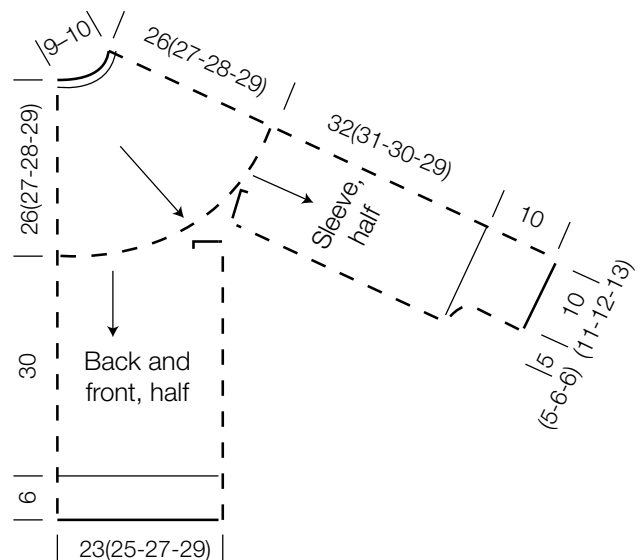


Chart key:

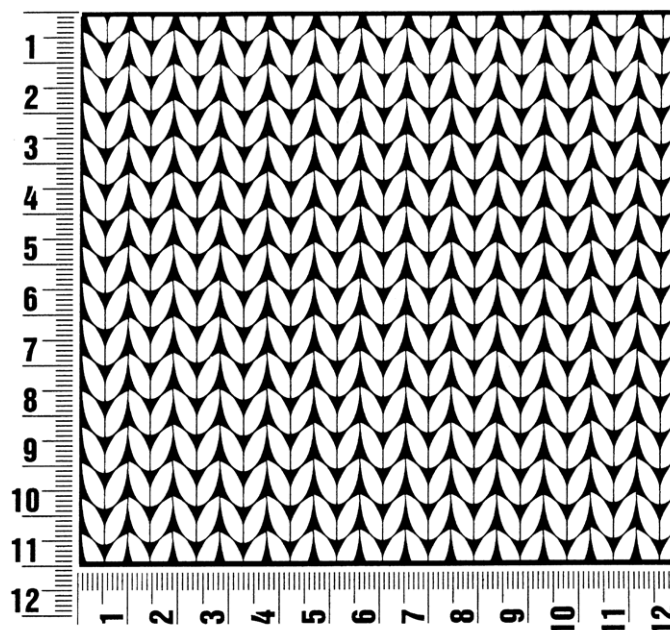
- [-] = p1
- [V] = brioche rib stitch
- [◇] = increase



Gauge Swatch

Before you begin ...

...make a gauge swatch. Use the recommended needles, yarns and pattern stitch for your gauge swatch. It should measure approx. 12 cm x 12 cm. Cast-on and bind-off rows, as well as selvage stitches should not be included in the measurement. Pin your swatch and block it as you would the finished pieces of the garment. Count stitches and rows over 10 cm. If your gauge swatch is too small, switch to larger needles. If your gauge swatch is too big, switch to smaller needles.



Abbreviations

beg = begin(ning) · **ch** = chain · **cont** = continue · **dec** = decreas(e)(ing) · **inc** = increas(e)(ing) · **k** = knit · **kwise** = as if to knit
meas = measures · **M1L** = lift strand between sts from front to back and knit this strand through the back loop · **M1R** = lift strand between sts from the back and knit this strand through the front loop · **patt** = pattern · **pm** = place marker · **p** = purl
pwise = as if to purl · **rem** = remain(ing) · **rep** = repeat(s) · **rev St st** = reverse stockinette stitch · **rnd(s)** = round(s) · **RS** = right side · **sc** = single crochet · **skp** = slip 1 stitch as if to knit, knit 1 stitch, pass slipped stitch over knitted stitch · **sk2p** = slip 1 stitch as if to knit, knit 2 together, pass slipped stitch over knitted stitch · **s2kp** = slip 2 stitches as if to knit, k 1 stitch, pass slipped stitches over knitted stitch · **sl** = slip · **st(s)** = stitch(es) · **St st** = stockinette stitch · **tbl** = through the back loop · **tog** = together · **wyib** = with yarn in back of work · **wyif** = with yarn in front of work · **WS** = wrong side · **yo(s)** = yarn over(s)

Publisher's Info

Publisher: Lana Grossa GmbH, Gaimersheim, www.lanagrossa.com

Photographer: Olaf Szczepaniak