

# LANA GROSSA



© Lana Grossa GmbH

Design 9 – Classici 23

---

**JACKET**  
**COOL WOOL BIG**

# JACKET • COOL WOOL BIG

## Design 9 – Classici 23



**Size** 36/38 (40/42, 44)

Instructions are given for first size. Figures in parenthesis refer to larger sizes. When only one figure is given, it applies to all sizes.

**Materials:** **650 (700, 750) g** of Lana Grossa **Cool Wool Big** (100% superfine Merino wool; 120 m/50 g) in Camel (**col 1009**) and **150 g** in Cream (**col 1008**). Size 3.5 and 4 mm needles; 2 size 3.5 mm circular needles, each 40 cm long; six 25 mm mother-of-pearl buttons.

**Rib patt:** K1, p1.

**St st:** K on RS, p on WS.

**Garter st:** K every row.

**Half-brioche rib:** Work according to chart. Multiple of 2 + 1. Numbers at right edge of chart indicate RS rows, number at left edge of chart indicates WS row. Work rows 1 – 3 once, then rep rows 2 and 3. **Note:** 1 stitch and 1 yo are treated as 1 stitch.

**Selvage sts:** On every row: Knit first and last st.

**Twisted garter selvage:** On RS row, ktbl first st, sl last st pwise wyib. On WS row, ptbl first st, sl last st pwise wyif.

**Full-fashion dbl decrease:** At beg of RS row, selvage st, 5 sts in half-brioche rib, k3tog; at end of RS row, work to last 9 sts, sk2p, 5 sts in half-brioche rib, selvage st.

**Full-fashion increase:** On RS row: M1, 1 st in from each edge. Work increased sts into patt.

**Gauge:** 23 sts and 46 rows = 10 x 10 cm in half-brioche rib on size 4 mm needles.

**Back:** With size 4 mm needles and Cream cast on 119 (127, 135) sts. Next row (WS): Selvage st, \* k1, p1; rep from \* to last 2 sts, k1, selvage st. Work in rib patt as set by last row until piece meas 7 cm from cast-on, ending with a WS row. Break Cream, join Camel. Maintaining selvage sts, work in half-brioche rib according to chart until piece meas 30 cm from cast-on, ending with a WS row. Shape raglan: Working full-fashion dbl dec, dec 2 sts at each end of next RS row, then every alt 6th and 8th row 4 times, then every 6th row 16 times (then every 6th row 18 times, then every alt 4th and 6th row 4 times / then every 6th row 12 times, then every alt 4th and 6th row 12 times) and when piece meas 58 (59, 60) cm from cast-on, bind off rem 35 sts.

**Left front:** With size 4 mm needles and Cream cast on 57 (61, 65) sts. Work in rib patt same as for back until piece meas 7 cm from cast-on, ending with a WS row. Break Cream, join Camel. Maintaining selvage sts, work in half-brioche rib according to chart until piece meas 30 cm from cast-on, end-

ing with a WS row. Shape raglan: Working full-fashion dbl dec, dec 2 sts at beg of next RS row, then every alt 6th and 8th row 4 times, then every 6th row 14 times (then every 6th row 18 times, then every alt 4th and 6th row 2 times / then every 6th row 12 times, then every alt 4th and 6th row 10 times). At same time, when piece meas 51 (52, 53) cm from cast-on, shape neck as foll: At beg of WS rows bind off 3 sts 1 time, 2 sts 1 time, 1 st 7 times and when same length as back to shoulder, bind off rem 7 shoulder sts.

**Right front:** Work same as left front, reversing all shaping.

**Left sleeve:** With size 4 mm needles and Cream cast on 49 sts. Work in rib patt same as for back until piece meas 7 cm from cast-on, ending with a WS row. Break Cream, join Camel. Maintaining selvage sts, work in half-brioche rib according to chart and shape sleeve as foll: Working full-fashion inc, inc 1 st at each end of 5 (7, 7)th row, then every 6th row 24 times (then every alt 4th and 6th row 28 times / then every 6th row 7 times, then every 4th row 25 times) = 99 (107, 115) sts. Work increased sts into patt. Work even until piece meas 40 cm from cast-on, ending with a WS row. Shape sleeve cap: Working full-fashion dbl dec, dec 2 sts at each end of next RS row, then every alt 6th and 8th row 4 times, then every 6th row 14 times (then every 6th row 18 times, then every alt 4th and 6th row 2 times / then every 6th row 12 times, then every alt 4th and 6th row 10 times). Dec 2 sts at beg of every 6th row 2 times (every alt 4th and 6th row 2 times / every alt 4th and 6th row 2 times) and at same time, bind off 5 sts at beg of next 3 WS rows, 4 sts at beg of next WS row.

**Right sleeve:** Work same as left sleeve, reversing cap shaping.

**Finishing:** Pin pieces to measurements and block. Sew raglan, side and sleeve seams. **Left front button band:** With size 3.5 mm needles, Cream and RS facing, pick up and k 135 (137, 139) sts evenly along left front edge. Next row (WS): Twisted garter selvage, \* p1, k1; rep from \* to last 2 sts, p1, twisted garter selvage. Cont in rib patt as set by last row until band meas 4.5 cm. Bind off all sts in rib. **Right front buttonhole band:** With size 3.5 mm needles, Cream and RS facing, pick up and k 135 (137, 139) sts evenly along right front edge. Work same as button band and at same time, on 6th row, work 6 buttonholes as foll: For each buttonhole bind off 3 sts. On foll WS row, cast on 3 sts over each set of bound-off sts. Work first buttonhole 3 (4, 3) cm up from cast-on edge, rem 5 buttonholes spaced 9 (9, 9.5) cm apart. **Collar:** With size 3.5 mm crochet hook and Cream, beginning at center of buttonhole band and ending at center of button band, work 1 row sc along neck edge, ending with 106 sc. Next 2 rows: Ch 1, sc in each sc across. Fasten off. With size 3.5 mm circular needle, Cream and RS facing, pick up and k 1 st in each sc = 106 sts. Purl 1 row, knit 1 row. Leave sts on needle, cut yarn. With second size 3.5 mm circular needle, Cream and WS facing, pick up and k 1 st in each sc = 106 sts. Purl 1 row, knit 1 row. Hold circular nee-

# JACKET · COOL WOOL BIG

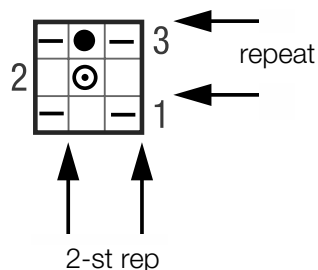
## Design 9 – Classici 23



dles parallel and with 3rd needle, join sts by knitting tog each st on one needle with its corresponding st on 2nd needle = 106 sts. Next row: Twisted garter selvage, 2 sts in garter st; beg with a knit row, work in St st over next 100 sts and at same time, inc 12 sts evenly across these 100 sts = 112 sts in St st, 2 sts in garter st, twisted garter selvage. Next 5 rows: Twisted garter selvage, 2 sts in garter st, 112 sts in St

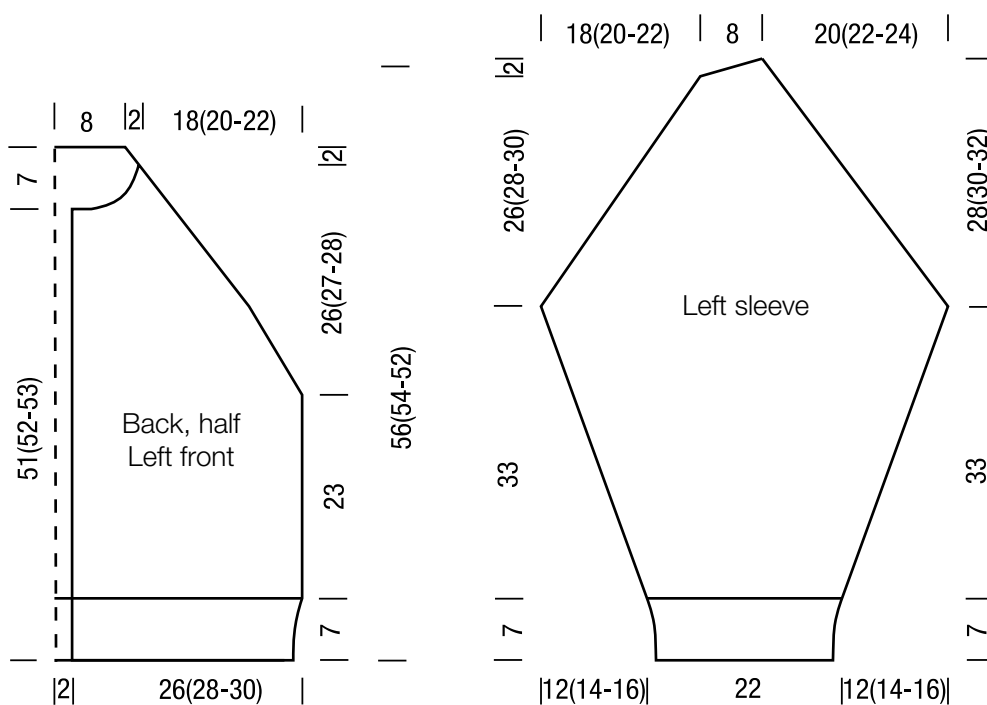
st, 2 sts in garter st, twisted garter selvage. Next inc row: Twisted garter selvage, 2 sts in garter st, M1R, work in St st to last 3 sts, M1R, 2 sts in garter st, twisted garter selvage. Cont in patt as established, rep inc row every 10th row once more = 122 sts. Cont in patt as established until collar meas 9 cm. Work in garter st across all sts for 6 rows. Loosely bind off all sts. Sew on buttons.

### Chart



### Chart key:

- = k1
- = p1
- ⊙ = make a yo, then sl next st pwise
- = ktog slipped st with its yo



## Gauge Swatch

### Before you begin ...

...make a gauge swatch. Use the recommended needles, yarns and pattern stitch for your gauge swatch. It should measure approx. 12 cm x 12 cm. Cast-on and bind-off rows, as well as selvage stitches should not be included in the measurement. Pin your swatch and block it as you would the finished pieces of the garment. Count stitches and rows over 10 cm. If your gauge swatch is too small, switch to larger needles. If your gauge swatch is too big, switch to smaller needles.



## Abbreviations

**beg** = begin(ning) · **ch** = chain · **cont** = continue · **dec** = decompas(e)(ing) · **inc** = increas(e)(ing) · **k** = knit · **kwise** = as if to knit  
**meas** = measures · **M1L** = lift strand between sts from front to back and knit this strand through the back loop · **M1R** = lift strand between sts from the back and knit this strand through the front loop · **patt** = pattern · **pm** = place marker · **p** = purl  
**pwise** = as if to purl · **rem** = remain(ing) · **rep** = repeat(s) · **rev St st** = reverse stockinette stitch · **rnd(s)** = round(s) · **RS** = right side · **sc** = single crochet · **skp** = slip 1 stitch as if to knit, knit 1 stitch, pass slipped stitch over knitted stitch · **sk2p** = slip 1 stitch as if to knit, knit 2 together, pass slipped stitch over knitted stitch · **s2kp** = slip 2 stitches as if to knit, k 1 stitch, pass slipped stitches over knitted stitch · **sl** = slip · **st(s)** = stitch(es) · **St st** = stockinette stitch · **tbl** = through the back loop · **tog** = together · **wyib** = with yarn in back of work · **wyif** = with yarn in front of work · **WS** = wrong side · **yo(s)** = yarn over(s)

### Publisher's Info

**Publisher:** Lana Grossa GmbH, Gaimersheim, www.lana-grossa.com

**Photographer:** Yannick Schütte