



© Lana Grossa GmbH

Design 8 – Nordic Knits 2

PULLOVER
NATURAL ALPACA PELO

PULLOVER · NATURAL ALPACA PELO

Design 8 – Nordic Knits 2



Size 36/38 (40/42, 44/46, 48/50)

Instructions are given for first size. Figures in parenthesis refer to larger sizes. When only one figure is given, it applies to all sizes.

Materials: 300 (350, 400, 450) g of Lana Grossa **Natural Alpaca Pelo** (63% cotton, 31% baby alpaca, 6% Merino wool; 125 m/50 g) in Off White (**col 01**) and 250 (300, 350, 400) g in Dark Grey Mélange (**col 04**). Size 4 and 5 mm needles; size 4 mm circular needle, 40 cm long.

St st: K on RS, p on WS.

Fair Isle patt: Work according to chart A or B as given in instructions. Numbers at right edge of charts indicate RS rows, numbers at left edge of charts indicate WS rows. Rep rows 1 – 8.

Rib patt: K3, p3.

Gauges: 18 sts and 19 rows = 10 x 10 cm in Fair Isle patt on size 5 mm needles; 21 sts and 27 rows/rnds = 10 x 10 cm in rib patt on size 4 mm needles.

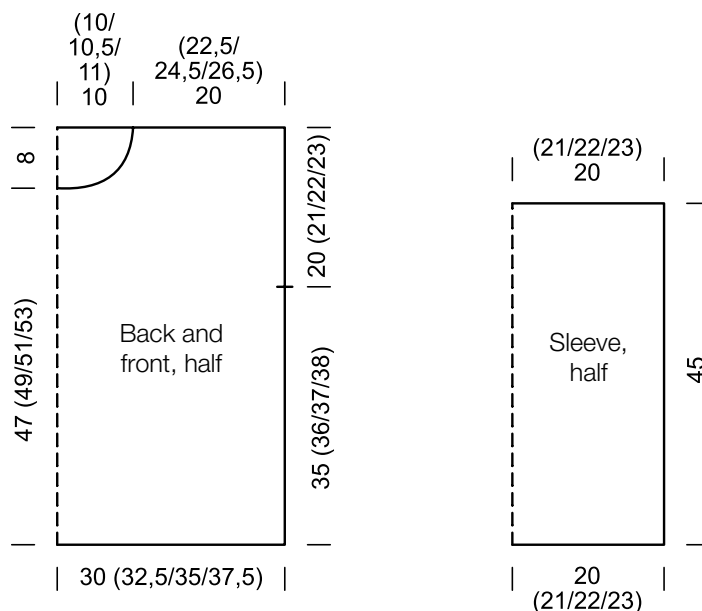
Back: With size 5 mm needles and Off White cast on 110 (119, 128, 137) sts. Purl 1 WS row. Next row (RS): Selvage st (not shown on chart); work row 1 of chart A = work 18-st patt rep 6 times (work 18-st patt rep 6 times, then work first 9 sts of patt rep once more, ending at arrow A / work 18-st patt rep 7 times / work 18-st patt rep 7 times, then work first 9 sts of patt rep once more, ending at arrow A); selvage st (not shown on chart). Maintaining selvage sts, cont to foll chart A until piece meas 35 (37, 39, 41) cm from cast-on. Place marker in first and last st on last WS row to indicate beg of armholes. Cont in patt until piece meas 55 (57, 59, 61) cm from cast-on. Loosely bind off all sts.

Front: With size 5 mm needles and Off White cast on 110 (119, 128, 137) sts. Purl 1 WS row. Next row (RS): Selvage st (not shown on chart); work row 1 of chart A = work 18-st patt rep 6 times (work first 9 sts of patt rep, ending at arrow A, then work 18-st patt rep 6 times / work 18-st patt rep 7 times / work first 9 sts of patt rep, ending at arrow A, then work 18-st patt rep 7 times); selvage st (not shown on chart). Maintaining selvage sts, cont to foll chart A until same length as back to armholes. Place armhole markers at each edge. Cont

in patt until piece meas 47 (49, 51, 53) cm from cast-on, ending with a WS row. Shape neck: Next row (RS): Bind off center 18 (19, 20, 21) sts. Working each side separately, bind off 4 sts at each neck edge 1 time, 2 sts 2 times, 1 st 1 time and when piece meas 8 cm from beg of neck shaping, bind off rem 37 (41, 45, 49) sts for each shoulder.

Sleeves: With size 5 mm needles and Off White cast on 74 (78, 82, 86) sts. Purl 1 WS row. Next row (RS): Selvage st (not shown on chart); work row 1 of chart B = work 18-st patt rep 4 times (beg at arrow B, work 2 sts before patt rep, then work 18-st patt rep 4 times, then work 2 sts after patt rep, ending at arrow B' / beg at arrow C, work 4 sts before patt rep, then work 18-st patt rep 4 times, then work 4 sts after patt rep, ending at arrow C' / beg at arrow D, work 6 sts before patt rep, then work 18-st patt rep 4 times, then work 6 sts after patt rep, ending at arrow D'); selvage st (not shown on chart). Maintaining selvage sts, cont to foll chart B until piece meas 45 cm from cast-on. Bind off all sts.

Finishing: Pin pieces to measurements and block. Sew shoulder seams. **Collar:** With size 4 mm circular needle, pick up and k 84 (90, 90, 96) sts evenly around neck edge. Place beg of rnd marker and join for working in rnds. Work in rib patt for 20 cm. Loosely bind off all sts. Sew on sleeves between markers. Sew side and sleeve seams.

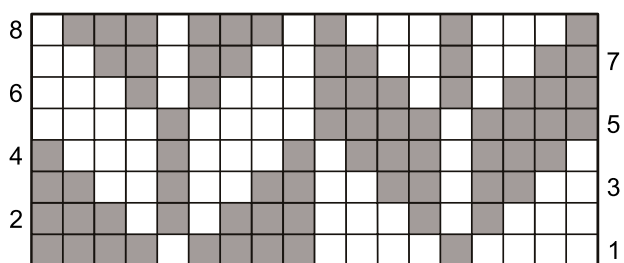


PULLOVER · NATURAL ALPACA PELO

Design 8 – Nordic Knits 2

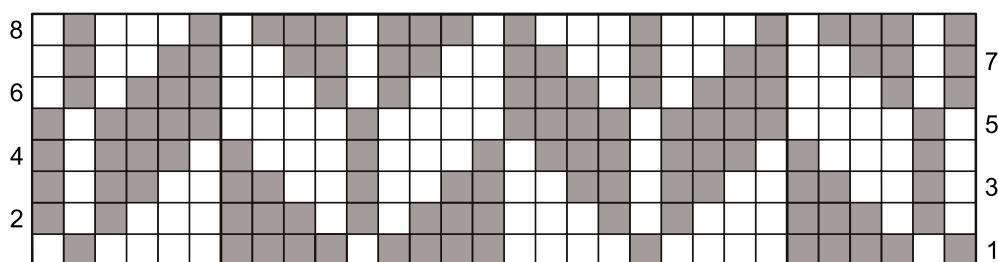


A



18-st rep

B



18-st rep

Chart key:

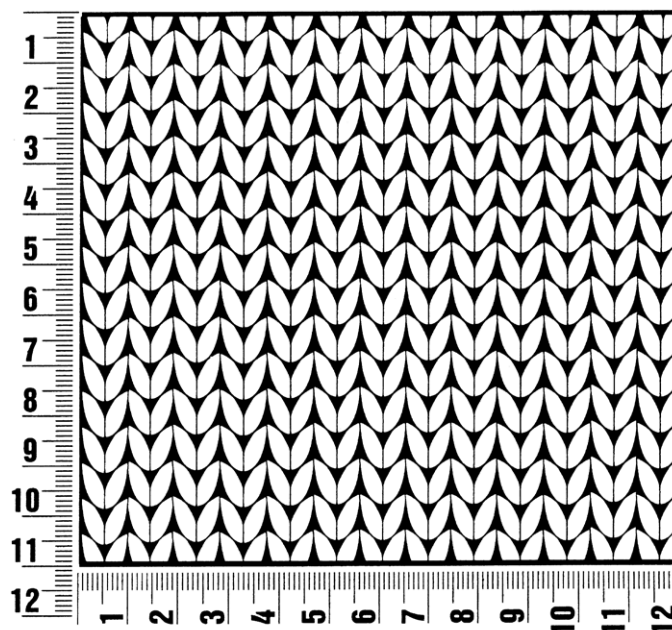
□ = 1 st in St st with Off White (col 01)

■ = 1 st in St st with Dark Grey Mélange (col 04)

Gauge Swatch

Before you begin ...

...make a gauge swatch. Use the recommended needles, yarns and pattern stitch for your gauge swatch. It should measure approx. 12 cm x 12 cm. Cast-on and bind-off rows, as well as selvage stitches should not be included in the measurement. Pin your swatch and block it as you would the finished pieces of the garment. Count stitches and rows over 10 cm. If your gauge swatch is too small, switch to larger needles. If your gauge swatch is too big, switch to smaller needles.



Abbreviations

beg = begin(ning) · **ch** = chain · **cont** = continue · **dec** = decomp(e)(ing) · **inc** = increas(e)(ing) · **k** = knit · **kwise** = as if to knit
meas = measures · **M1L** = lift strand between sts from front to back and knit this strand through the back loop · **M1R** = lift strand between sts from the back and knit this strand through the front loop · **patt** = pattern · **pm** = place marker · **p** = purl
pwise = as if to purl · **rem** = remain(ing) · **rep** = repeat(s) · **rev St st** = reverse stockinette stitch · **rnd(s)** = round(s) · **RS** = right side · **sc** = single crochet · **skp** = slip 1 stitch as if to knit, knit 1 stitch, pass slipped stitch over knitted stitch · **sk2p** = slip 1 stitch as if to knit, knit 2 together, pass slipped stitch over knitted stitch · **s2kp** = slip 2 stitches as if to knit, k 1 stitch, pass slipped stitches over knitted stitch · **sl** = slip · **st(s)** = stitch(es) · **St st** = stockinette stitch · **tbl** = through the back loop · **tog** = together · **wyib** = with yarn in back of work · **wyif** = with yarn in front of work · **WS** = wrong side · **yo(s)** = yarn over(s)

Publisher's Info

Publisher: Lana Grossa GmbH, Gaimersheim, www.lana-grossa.com

Photographer: Lana Grossa