

Creative idea for a changing table or child's bedroom

DIY: Mobile with flowers and bee

Materials

- Metal ring
- Felt
- A remnant of organza
- Anorak cord
- Fibre filling
- Vliesofix/Bondaweb (item no. 9299)
- Matsuno glass beads
- Ribbon for hanging
- Needle, thread, scissors

By the way...! Make your mobile in your own favourite colours.



**FREE
DIY**



1. Make sure you have everything you need.
TIP: You can make the motifs in other woven fabrics or felt.
You can scale the templates up or down in size.
You can make a garland of flowers or a mobile only with bees.



2. Print out the templates. Cut along the dotted lines. The pattern includes 0.5 cm seam allowance.



3. Lay the pattern on the fabric. Mark using a marker pen and cut out. The apples on the tree are drawn around a lid.



4. Cut a length of yarn (about 25 cm) for hanging. Tie a double knot tightly at one end to prevent the cord from escaping after it is sewn in. Lay the fabric parts together, wrong sides facing. Insert the knotted cord between the fabric pieces. Sew 0.5 cm from the edge and leave a gap for filling and inserting the tree trunk. Change sewing thread as you progress. Use a thread that matches the fabric.



5. The apples are affixed with Vliesofix. Follow the instructions given for Vliesofix/Bondaweb (item no. 9299) at Selfmade.com.



6. Iron the apples onto the tree crown.



7. Stuff the crown and trunk with cotton wool. To stuffing easier, use a knitting needle to poke the cotton wool down into the trunk.



8. Insert the top of the tree trunk into the opening in the crown. Close the gap on the trunk by continuing the line of stitches 0.5 cm from the edge. Make the other motifs in the same way.



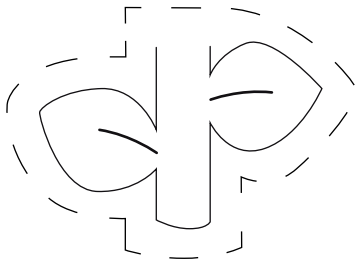
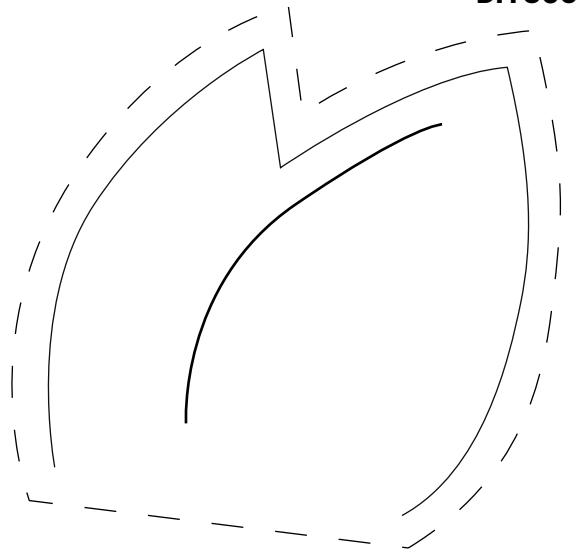
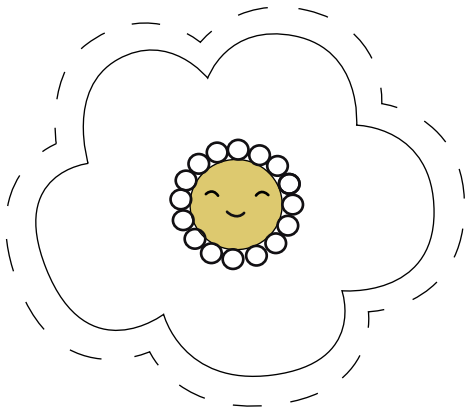
9. Draw all the details with the marker pen onto one piece of the bee's body. Cut 6 lengths of anorak cord, each approx. 7 cm long for the antennae and legs. Cut the wing from a scrap of fabric, e.g. organza.



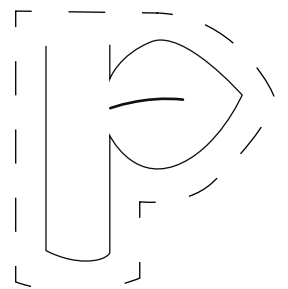
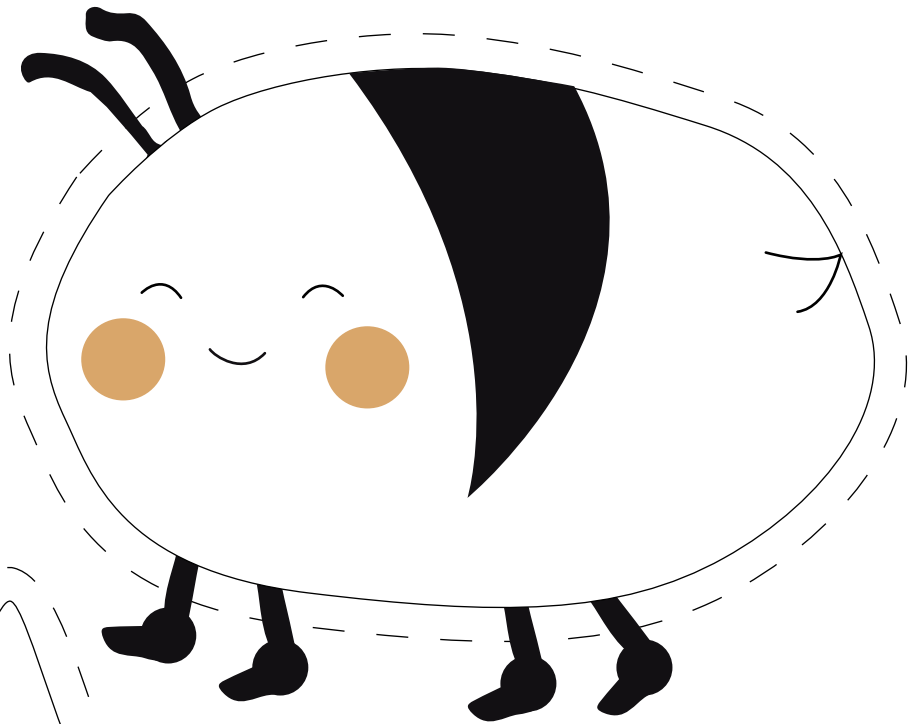
10. Iron the black piece onto the body with Vliesofix. Fold a dart half way along the straight edge of the wing. Lay the two pieces of the bee's body together, wrong sides facing. Use the markings and add the bee's antennae, legs, wings and the yarn for hanging between the two body pieces. Sew the fabric pieces 0.5 cm from the edge and leave a gap for filling and inserting cotton wool.

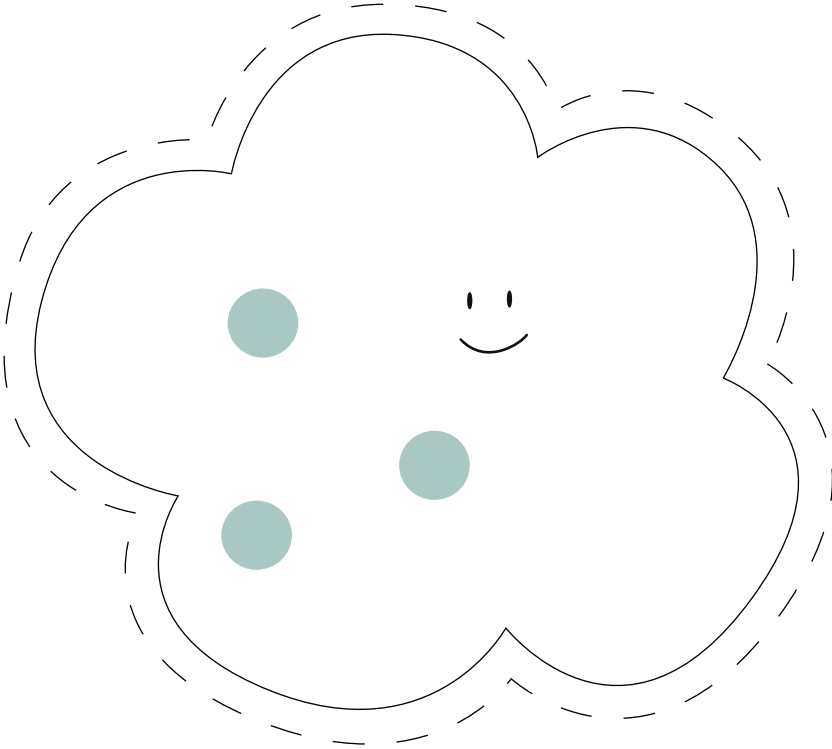


11. Tie knots in the bee's antennae and legs. Embroider faces and beads onto the figures. Tie all the figures to the metal ring. Voilà, your mobile is finished.



**Cut two of each
pattern piece**





**Cut two of each
pattern piece**

